



WEST RESERVE DRIVE
— CORRIDOR PLANNING STUDY —

Kalispell, MT



MARCH 2021

**PUBLIC
INFORMATION**

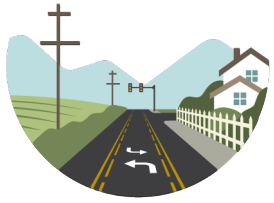
MEETING #1

TITLE VI CONSIDERATIONS

This meeting is held pursuant to Title VI of the 1964 Civil Rights Act, which ensures that no person shall be excluded from participation in, be denied the benefits of, or otherwise be subjected to discrimination on the basis of a protected status under any MDT program or activity.

WHY IS THIS CORRIDOR BEING STUDIED?





WEST RESERVE DRIVE

— CORRIDOR PLANNING STUDY —



PLANNING STUDY PROCESS

WHAT IS A CORRIDOR STUDY?

A corridor study is conducted before design, right-of-way acquisition, environmental compliance, and construction.



AGENDA

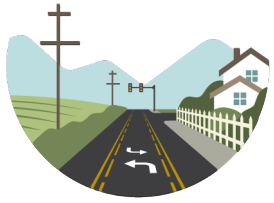
- **Goals and Purpose**
- **Existing and Projected Conditions Overview**
- **Environmental Overview**
- **Next Steps**
- **Question and Answer**



GOALS AND PURPOSE

- **Identify corridor needs and objectives**
- **Identify short-term and long-term improvement options**
- **Develop planning-level cost estimates**
- **Identify funding sources**
- **Develop information and data to be forwarded into the environmental process if a project moves forward from the study**





WEST RESERVE DRIVE

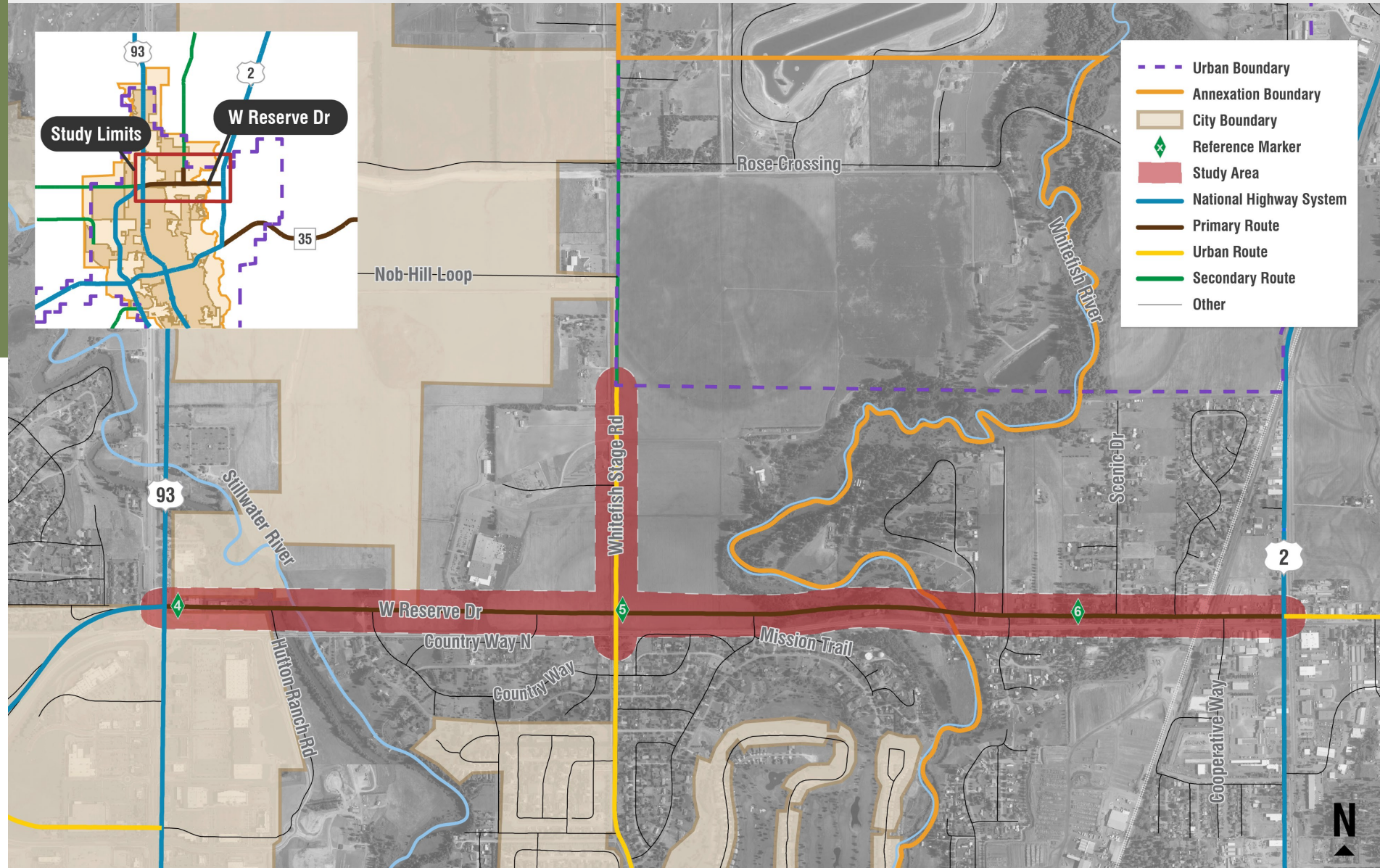
— CORRIDOR PLANNING STUDY —



STUDY BACKGROUND

STUDY AREA

- W. Reserve Dr. - US 93 to US 2
- Whitefish Stage Road – 0.5 mile north and 300 feet south
- 250-foot buffer on either side of centerline

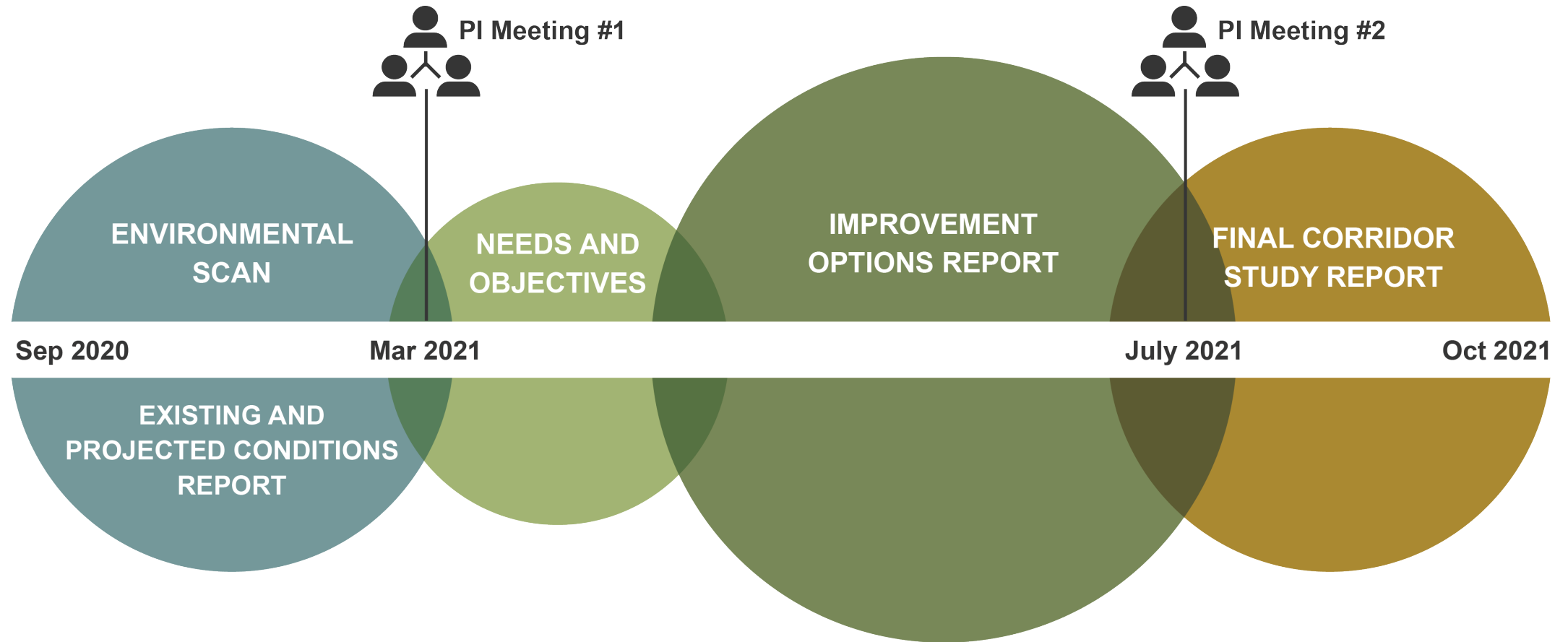


STUDY BACKGROUND

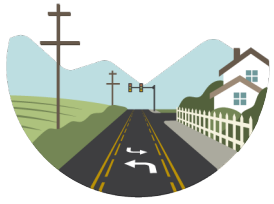
- W. Reserve Dr. provides an important east-west connection between US 93 and US 2, serving residential, commercial, and industrial properties
- Significant increase in Flathead Valley population
- Increased traffic has resulted in severe congestion and delay



STUDY SCHEDULE



WEST RESERVE DRIVE
— CORRIDOR PLANNING STUDY —



WEST RESERVE DRIVE
— CORRIDOR PLANNING STUDY —



EXISTING & PROJECTED CONDITIONS OVERVIEW

ROADWAYS & BRIDGES



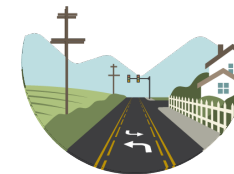
Stillwater River Bridge



Whitefish River Bridge



Whitefish Stage Road Intersection

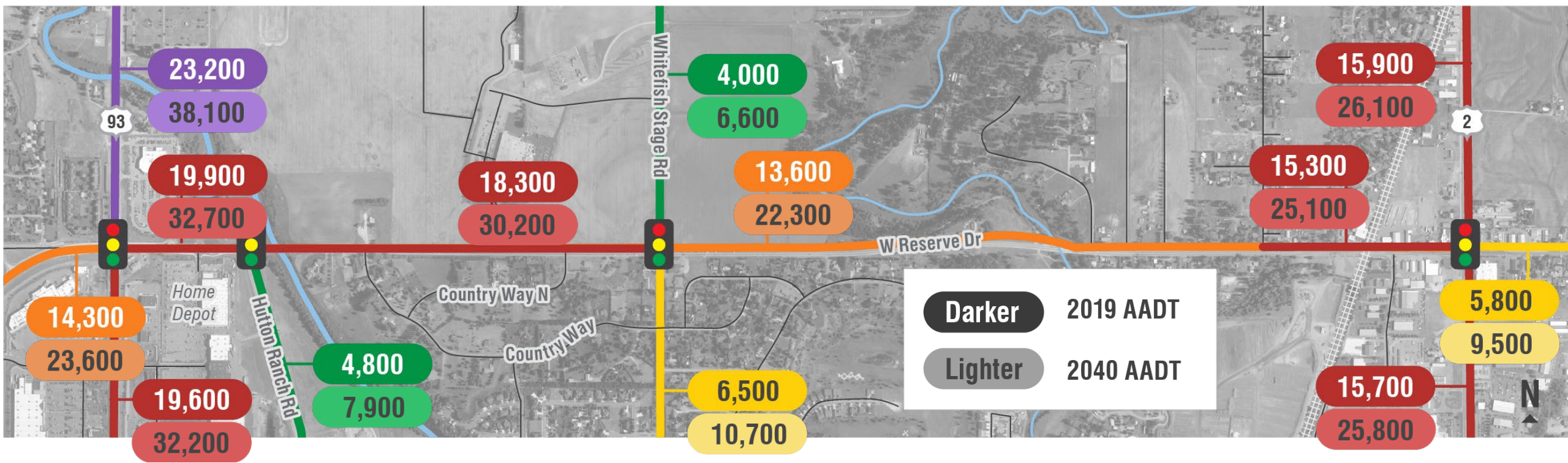


WEST RESERVE DRIVE
— CORRIDOR PLANNING STUDY —

SIDEWALK AND DRIVEWAY ACCESS



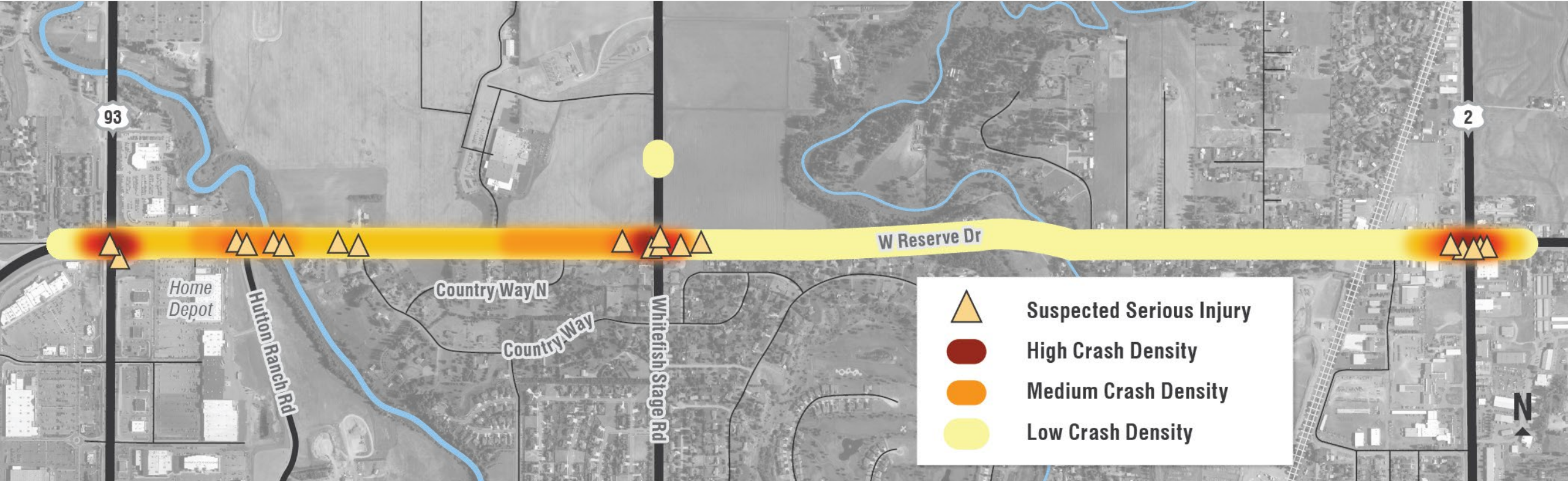
EXISTING ANNUAL AVERAGE DAILY TRAFFIC (AADT)



PM PEAK HOUR LEVEL OF SERVICE



CRASH DENSITY



- 38% of crashes occurred during congested traffic conditions (from 3-6pm)
- 58% of crashes were rear-end collisions



WEST RESERVE DRIVE
— CORRIDOR PLANNING STUDY —

SUMMARY OF FINDINGS

TRANSPORTATION SYSTEM

- **Physical Features:**

- Closely spaced driveways and lower speeds on the east end of the corridor
- Gaps in sidewalk along the corridor
- Pavement condition is fair on the west end and poor on the east end

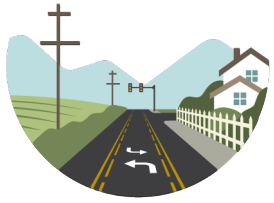
- **Traffic Conditions:**

- W. Reserve Dr. is near capacity, and 2 intersections are currently failing
- All 7 study intersections expected to fail by 2040

- **Traffic Safety:**

- Crashes have doubled between 2010 and 2020
- Whitefish Stage Rd. intersection has the highest crash rate





WEST RESERVE DRIVE

— CORRIDOR PLANNING STUDY —

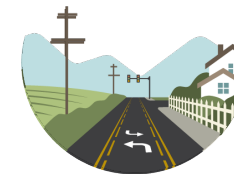


ENVIRONMENTAL OVERVIEW

SOCIOECONOMIC CONDITIONS

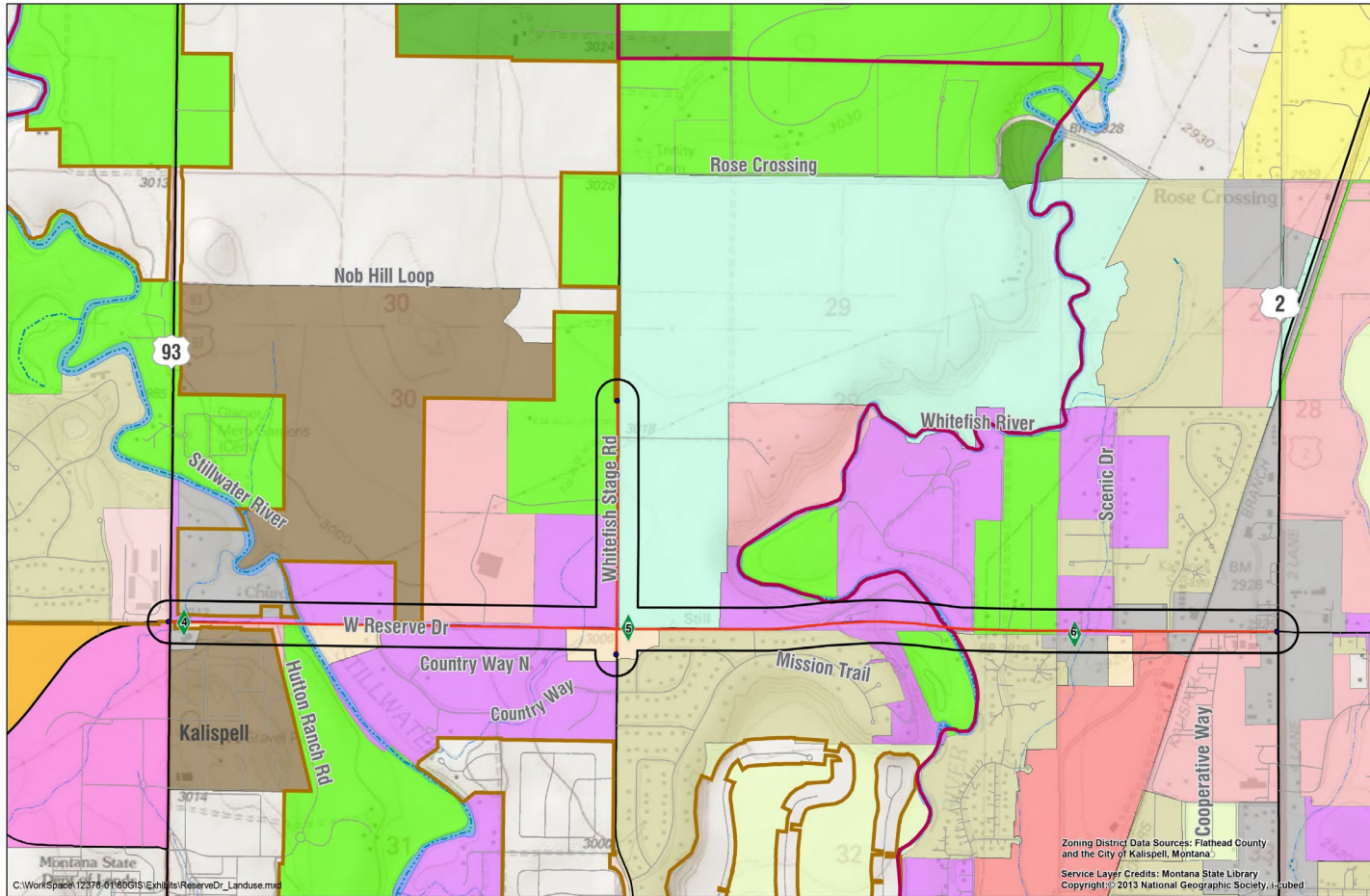


- **Population:**
 - Increasing growth trends are expected to continue
- **Income:**
 - Exhibits recreation-resort characteristics
- **Environmental Justice:**
 - Adverse affects are unlikely



WEST RESERVE DRIVE
— CORRIDOR PLANNING STUDY —

LAND USE CONSIDERATIONS



Legend

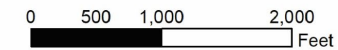
- Kalispell Annexation Boundary
- City Boundary
- Reference Marker
- Study Corridor
- Study Area Boundary (500 feet wide)

City of Kalispell Zoning Districts

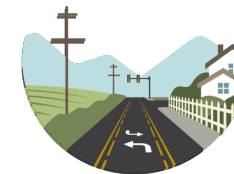
- General Business
- General Business with Planned Urban Development
- Industrial - Business with Planned Urban Development
- Residential/Professional Office with Planned Urban Development

Flathead County Zoning Districts

- Agricultural
- General Business
- Heavy Industrial
- Light Industrial
- Neighborhood / Professional Business
- One Family Residential
- Residential
- Rural Residential Land Use
- Scenic Corridor
- Suburban Agricultural
- Suburban Residential
- Two-Family Residential

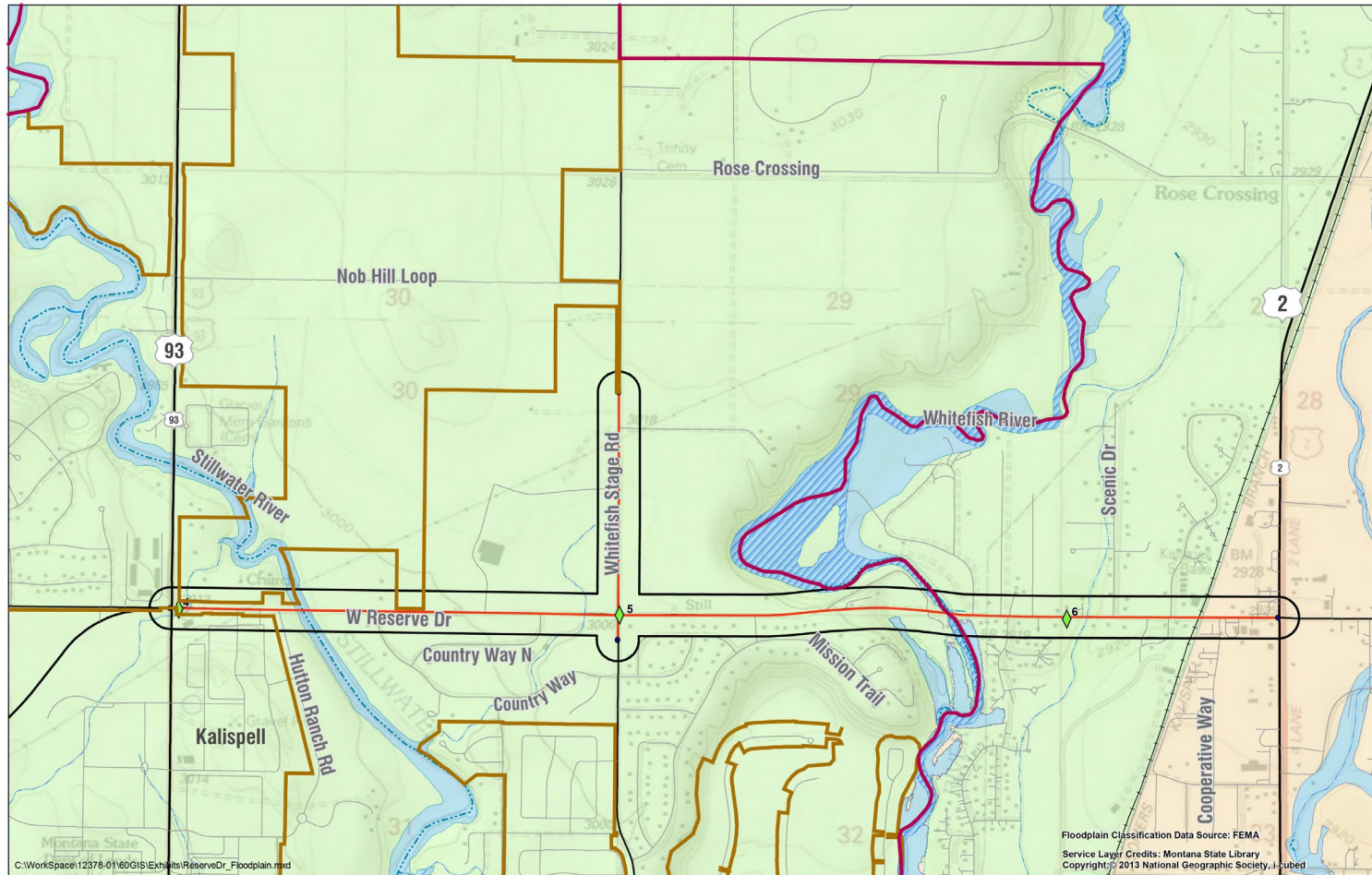


Zoning District Data Sources: Flathead County and the City of Kalispell, Montana
 Service Layer Credits: Montana State Library
 Copyright: © 2013 National Geographic Society, I-subed








WEST RESERVE DRIVE
 — CORRIDOR PLANNING STUDY —




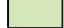
AQUATIC RESOURCES

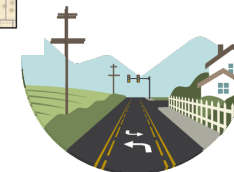
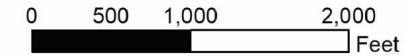


Legend

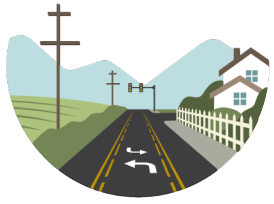
-  Kalispell Annexation Boundary
-  City Boundary
-  Reference Marker
-  Study Corridor
-  Study Area Boundary (500 feet wide)

Flood Hazard Zones

-  1% Annual Chance Flood Hazard
-  Regulatory Floodway
-  0.2% Annual Chance Flood Hazard
-  Area of Minimal Flood Hazard



WEST RESERVE DRIVE
— CORRIDOR PLANNING STUDY —



WEST RESERVE DRIVE

— CORRIDOR PLANNING STUDY —



NEXT STEPS

UPCOMING MILESTONES

- **March 2021** – Finalize Existing and Projected Conditions Report
- **April 2021** – Identify Needs and Objectives
- **June 2021** – Improvement Options Report
- **Summer 2021** – Informational Meeting #2



WEST RESERVE DRIVE
— CORRIDOR PLANNING STUDY —

PUBLIC INVOLVEMENT OPPORTUNITIES

- Comment



Virtual Platform

<https://tinyurl.com/westreserve>



MDT Comment Form

<https://www.mdt.mt.gov/pubinvolve/westreserve/>

Call or email the project team

- Public meeting #2 – Date TBD

Your input is needed!

There are various opportunities to offer input to this corridor planning study.



Interactive Map

Submit your thoughts, ideas, or concerns on a map of the corridor.

START 1 Jan

END 30 Sep

[View Map](#)



Public Forum

Post and discuss your thoughts, ideas, or concerns to this interactive forum.

START 1 Jan

END 30 Sep

[Join The Discussion](#)



Vicki Crnich

MDT

Project Manager

(406) 444-7653

vcrnich@mt.gov



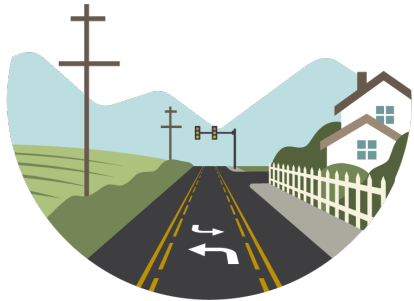
Cody Salo

DOWL

Project Manager

(406) 324-7404

csalo@dowl.com



WEST RESERVE DRIVE
— CORRIDOR PLANNING STUDY —

Kalispell, MT



Q&A FORUM

SUBMIT COMMENTS



- **Study Website:** <https://www.mdt.mt.gov/pubinvolve/WestReserve/>



- **Virtual Participation Platform:** <https://tinyurl.com/westreserve>

- **Points of Contact:**

Vicki Crnich

MDT

Project Manager

(406) 444-7653

vcrnich@mt.gov

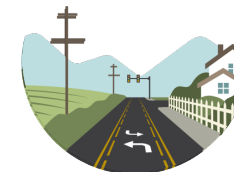
Cody Salo

DOWL

Project Manager

(406) 324-7404

csalo@dowl.com



WEST RESERVE DRIVE
— CORRIDOR PLANNING STUDY —