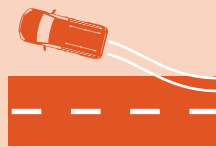




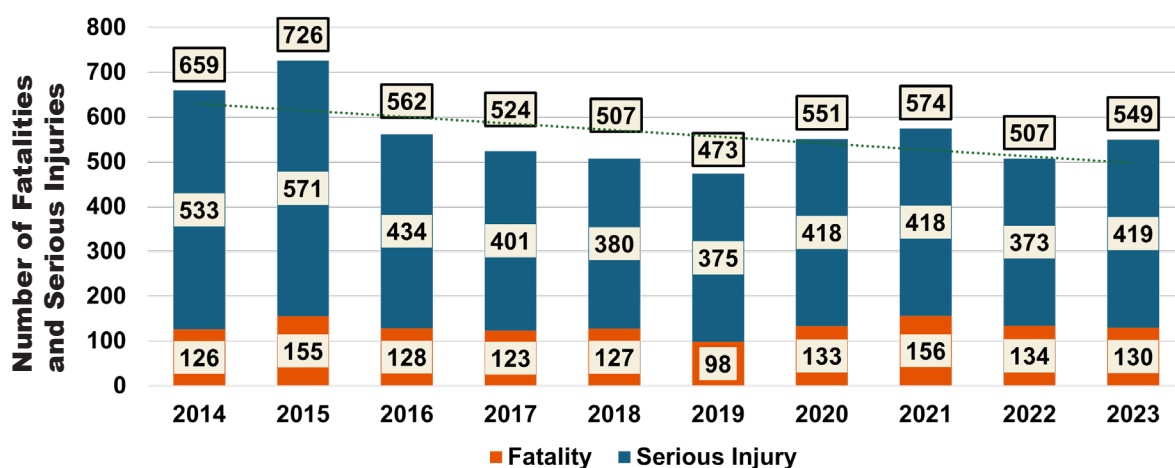
## SAFE ROADS



## Roadway Departure

Montana has defined roadway departure crashes as non-junction crashes resulting in one of the following crash types: overturning, fixed object, head-on, or sideswipe-opposite direction crashes.

## Roadway Departure Fatalities and Serious Injuries (FSI) by Year



56%

of total FSI

## Leading Factors of Roadway Departure FSI

The 4 leading factors of Roadway Departure FSI are:



52%

Impaired Drivers



46%

Unrestrained  
Vehicle Occupants

35%

Careless, Inattentive,  
and/or Distracted  
Driving

27%

Speed Related

## Rural



88%

## Urban



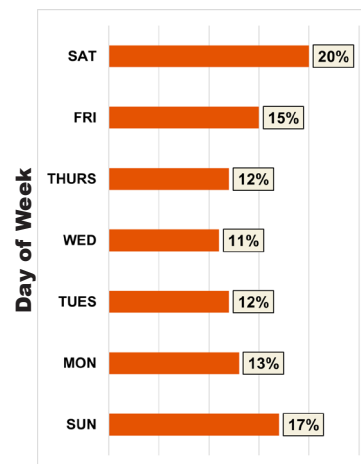
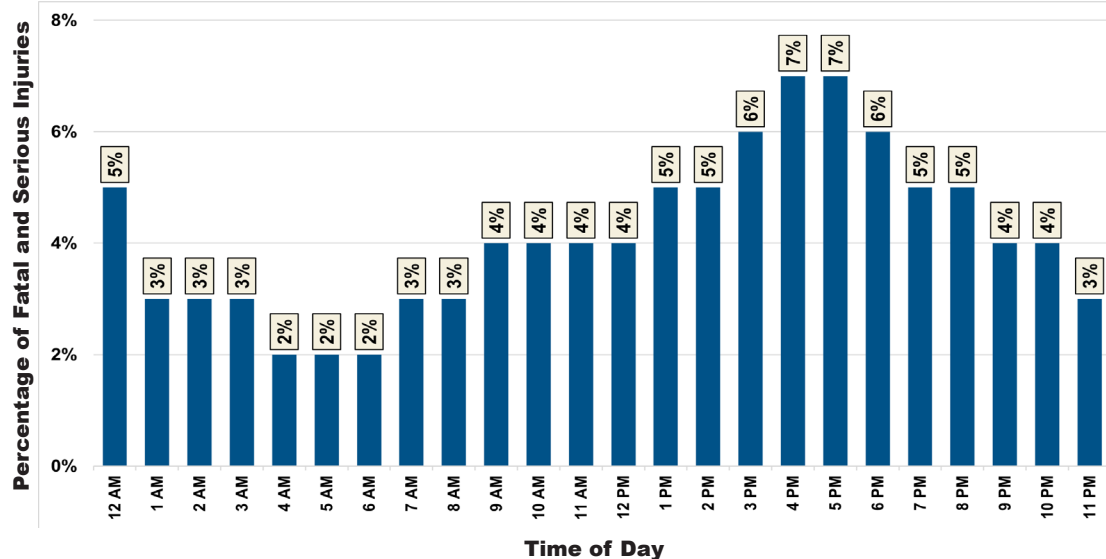
11%

- 53%** Impaired Drivers  
**47%** Unrestrained Vehicle Occupants  
**36%** Careless, Inattentive, and/or Distracted Drivers  
**26%** Speed Related

- 50%** Impaired Drivers  
**39%** Unrestrained Vehicle Occupants  
**30%** Speed Related  
**28%** Careless, Inattentive, and/or Distracted Drivers

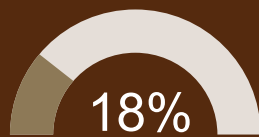
\* All data is sourced from the MDT 2014-2023 Crash Data, February 2025 Extract (Persons)  
 Data current as of February 2025 and subject to change with subsequent updates.

## Roadway Departure Fatalities and Serious Injuries (FSI) by Time of Day, Week, and Year

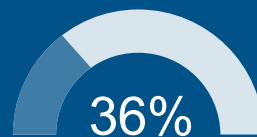


Percentage of Fatal and Serious Injuries

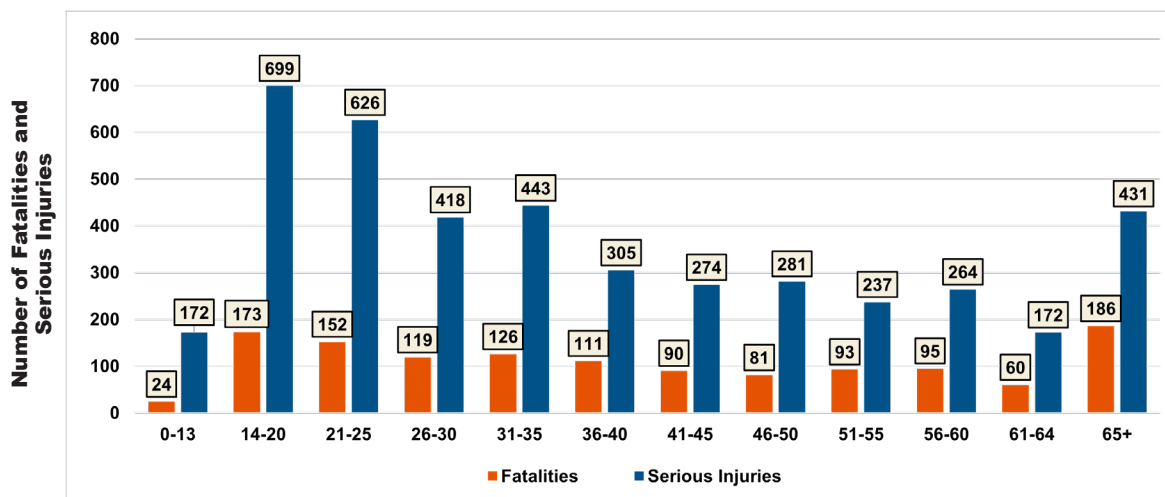
### Winter Months (Dec-Feb)



### Summer Months (Jun-Aug)



## Roadway Departure FSI by Age



**YOUNGER DRIVERS INVOLVED**  
(14-20 years of age)  
make up **9%** of all roadway departure FSI.

**OLDER DRIVERS INVOLVED**  
(65+ years of age)  
make up **3%** of all roadway departure FSI.

\* All data is sourced from the MDT 2014-2023 Crash Data, February 2025 Extract (Persons)  
Data current as of February 2025 and subject to change with subsequent updates.

This document was printed at state expense. Information on the cost of publication may be obtained by contacting the Department of Administration. Alternative accessible formats of this document will be provided on request. Persons who need an alternative format should contact the Office of Civil Rights, Montana Department of Transportation, 2701 Prospect Avenue, PO Box 201001, Helena, MT 59620. Telephone 406-444-5416 or Montana Relay Service at 711.



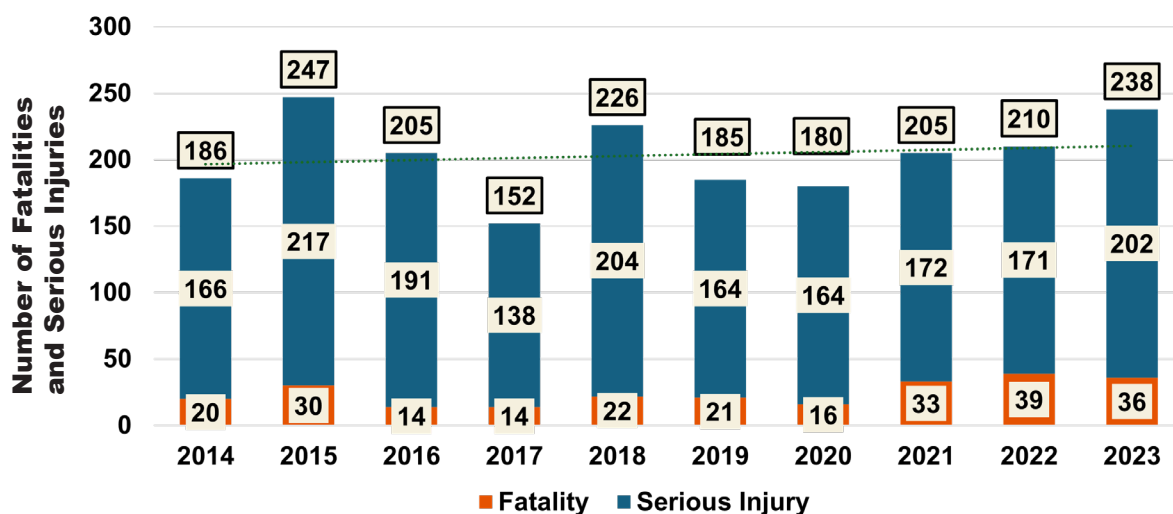
## SAFE ROADS



## Intersections

Montana has defined intersection related crashes as a crash occurring at an intersection, or near an intersection. The crash is judged to be related to the intersection by the reporting officer.

## Intersection Related Fatalities and Serious Injuries (FSI) by Year



20%

of total FSI

## Leading Factors of Intersection Related FSI

The 4 leading factors of intersection related FSI are:

**33%**  
Careless, Inattentive,  
and/or Distracted  
Driving

**22%**  
Unrestrained  
Vehicle Occupants

**26%**  
Impaired Drivers

**13%**  
Speed Related

**Rural**  
**39%**

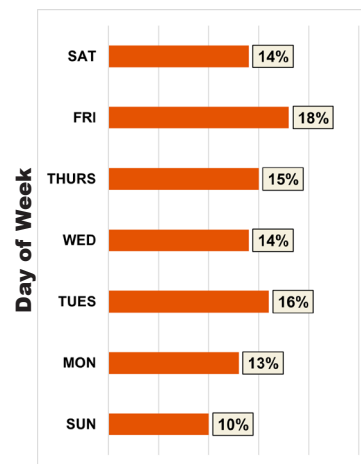
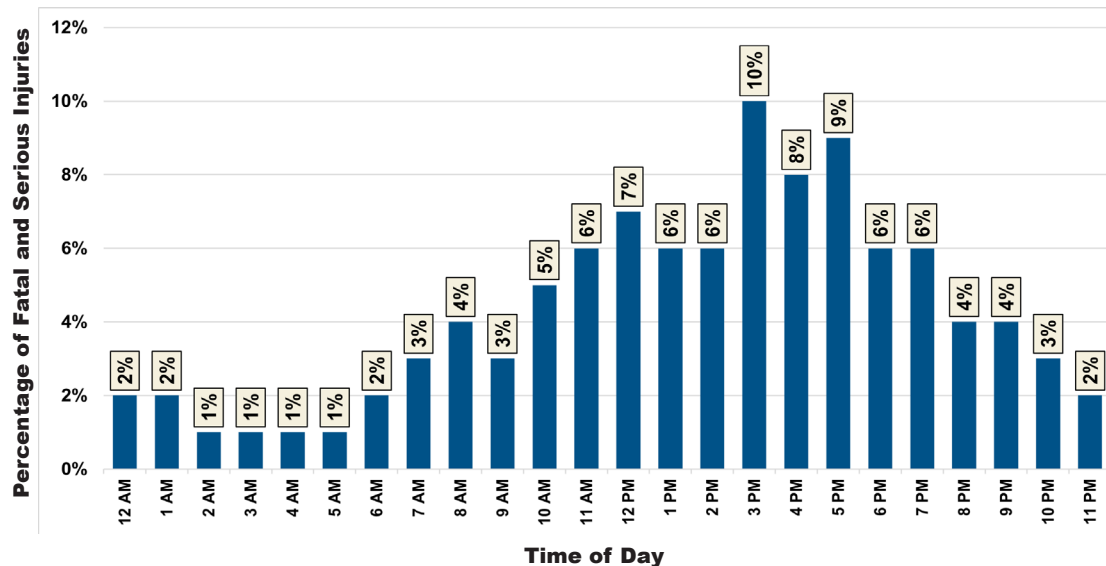
**37%** Impaired Drivers  
**36%** Careless, Inattentive,  
and/or Distracted  
Drivers  
**28%** Unrestrained Vehicle  
Occupants  
**16%** Speed Related

**Urban**  
**61%**

**30%** Careless, Inattentive,  
and/or Distracted  
Drivers  
**18%** Impaired Drivers  
**18%** Unrestrained Vehicle  
Occupants  
**11%** Speed Related

\* All data is sourced from the MDT 2014-2023 Crash Data, February 2025 Extract (Persons)  
Data current as of February 2025 and subject to change with subsequent updates.

## Intersection Related Fatalities and Serious Injuries (FSI) by Time of Day, Week, and Year



Percentage of Fatal and Serious Injuries

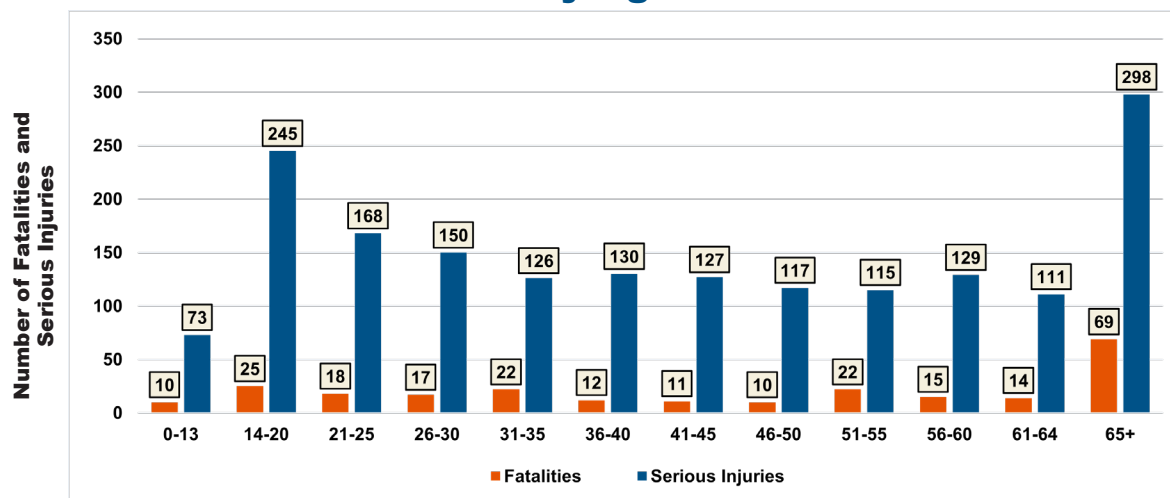
### Winter Months (Dec-Feb)

18%

### Summer Months (Jun-Aug)

35%

## Intersection Related FSI by Age



\* All data is sourced from the MDT 2014-2023 Crash Data, February 2025 Extract (Persons)

Data current as of February 2025 and subject to change with subsequent updates.



### YOUNGER DRIVERS INVOLVED

(14-20 years of age)

make up **13%** of all intersection related FSI.



### OLDER DRIVERS INVOLVED

(65+ years of age)

make up **7%** of all intersection related FSI.

This document was printed at state expense. Information on the cost of publication may be obtained by contacting the Department of Administration. Alternative accessible formats of this document will be provided on request. Persons who need an alternative format should contact the Office of Civil Rights, Montana Department of Transportation, 2701 Prospect Avenue, PO Box 201001, Helena, MT 59620. Telephone 406-444-5416 or Montana Relay Service at 711.





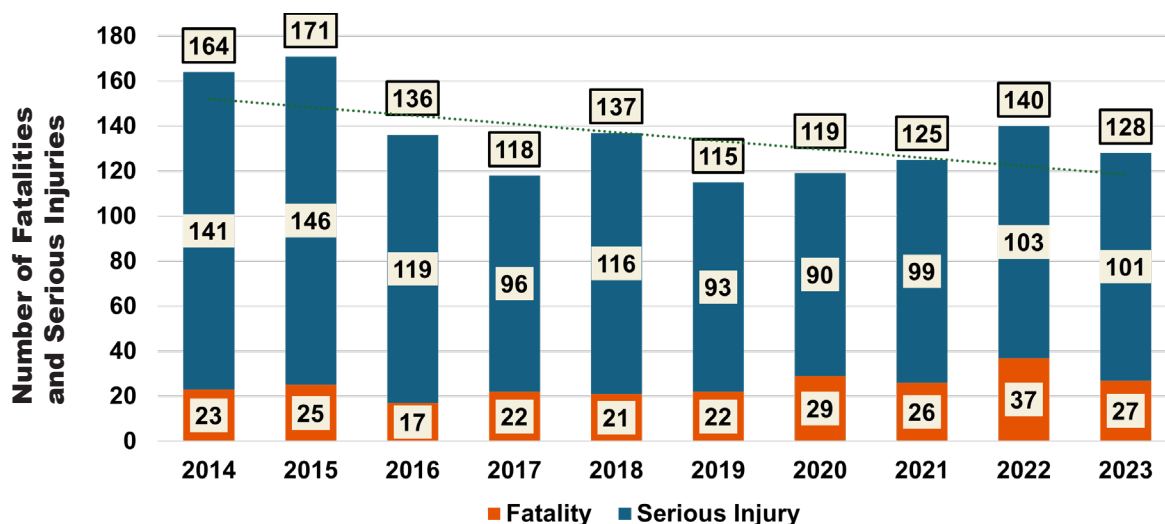
## SAFE ROADS



## Motorcyclists

Montana has defined motorcyclists as any person riding on a motorcycle (or moped), including the operator and any passengers.

## Motorcyclists Fatalities and Serious Injuries (FSI) by Year



14%

of total FSI

## Leading Factors of Motorcyclist FSI

The 4 leading factors of motorcyclist FSI are:



**44%**  
Roadway  
Departures



**32%**  
Careless, Inattentive,  
and/or Distracted  
Driving



**31%**  
Impaired Drivers



**17%**  
Speed Related

## Rural



70%

**51%** Roadway Departures  
**33%** Careless, Inattentive,  
and/or Distracted  
Drivers  
**30%** Impaired Drivers  
**15%** Speed Related

## Urban

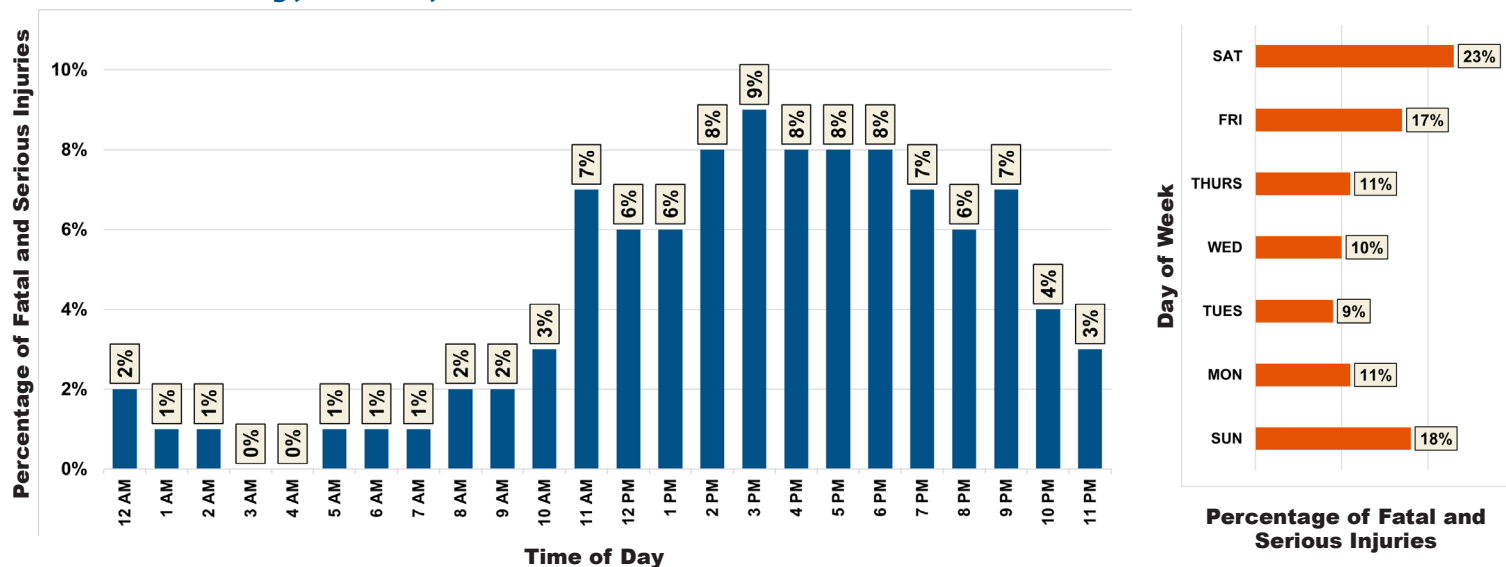


29%

**33%** Impaired Drivers  
**29%** Careless, Inattentive,  
and/or Distracted  
Drivers  
**28%** Roadway Departures  
**22%** Speed Related

\* All data is sourced from the MDT 2014-2023 Crash Data, February 2025 Extract (Persons)  
Data current as of February 2025 and subject to change with subsequent updates.

## Motorcyclists Fatalities and Serious Injuries (FSI) by Time of Day, Week, and Year



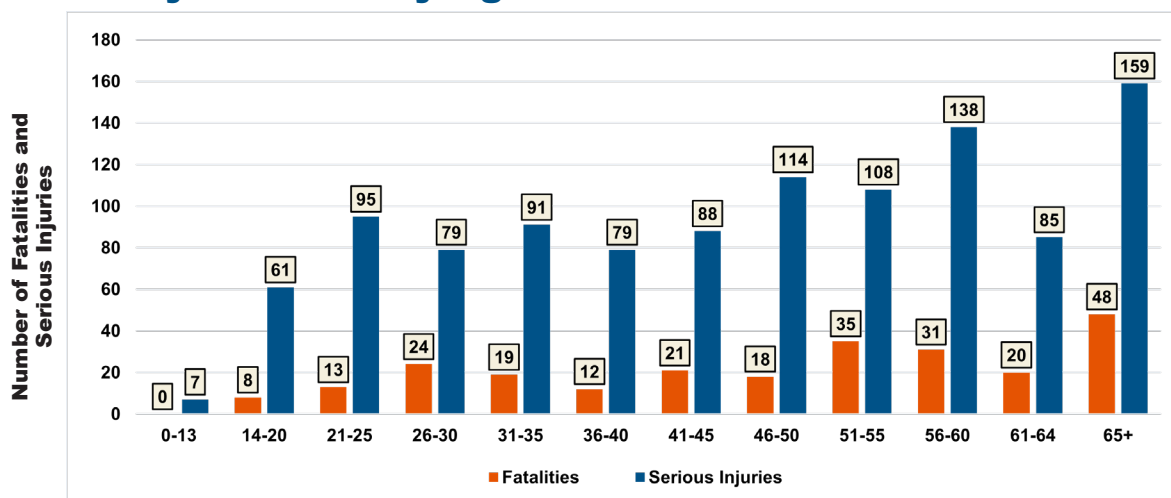
### Winter Months (Dec-Feb)

2%

### Summer Months (Jun-Aug)

64%

## Motorcyclists FSI by Age



\* All data is sourced from the MDT 2014-2023 Crash Data, February 2025 Extract (Persons)  
Data current as of February 2025 and subject to change with subsequent updates.



**YOUNGER DRIVERS INVOLVED**  
(14-20 years of age)  
make up 4% of all motorcyclist FSI.



**OLDER DRIVERS INVOLVED**  
(65+ years of age)  
make up 1% of all motorcyclist FSI.

This document was printed at state expense. Information on the cost of publication may be obtained by contacting the Department of Administration. Alternative accessible formats of this document will be provided on request. Persons who need an alternative format should contact the Office of Civil Rights, Montana Department of Transportation, 2701 Prospect Avenue, PO Box 201001, Helena, MT 59620. Telephone 406-444-5416 or Montana Relay Service at 711.



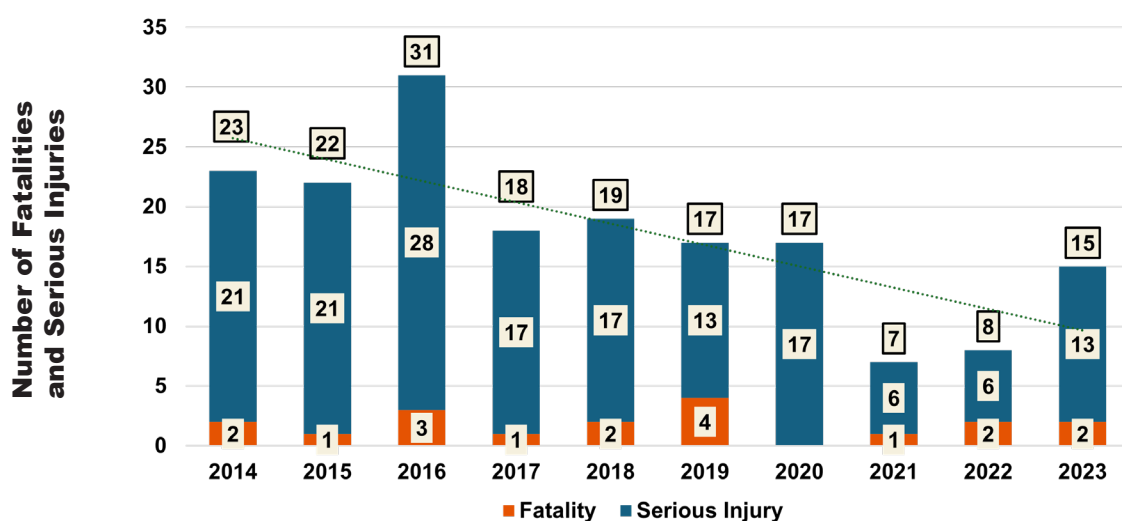
## SAFE ROADS



## Bicyclists

Montana has defined bicyclists as anyone who rides a bicycle. A “bicycle” is a vehicle propelled solely by human power on which any person may ride, irrespective of the number of wheels, except scooters, wheelchairs, and similar devices.

## Bicyclists Fatalities and Serious (FSI) Injuries by Year



2%

of total FSI

## Leading Factors of Bicyclists FSI

The 3 leading factors of bicyclists FSI are:



24%

Careless, Inattentive,  
and/or Distracted  
Driving



10%

Impaired Drivers



2%

Speed Related

## Rural



21%

27% Careless, Inattentive,  
and/or Distracted  
Drivers

14% Impaired Drivers

3% Speed Related

## Urban



77%

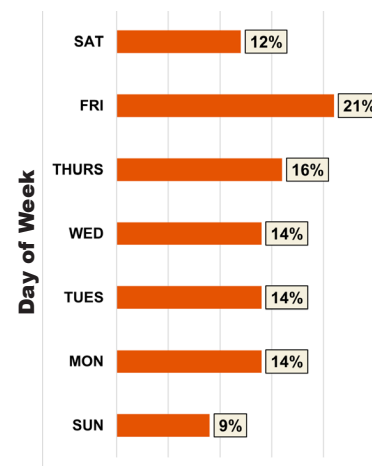
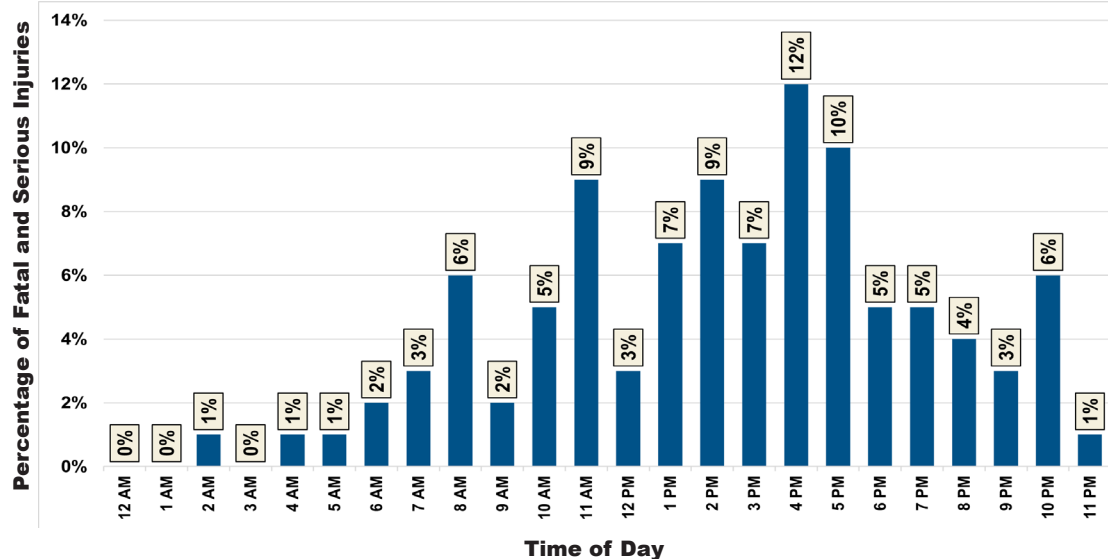
23% Careless, Inattentive,  
and/or Distracted  
Drivers

7% Impaired Drivers

2% Speed Related

\* All data is sourced from the MDT 2014-2023 Crash Data, February 2025 Extract (Persons)  
Data current as of February 2025 and subject to change with subsequent updates.

## Bicyclists Fatalities and Serious Injuries (FSI) by Time of Day, Week, and Year

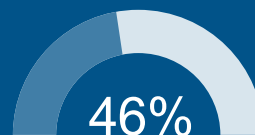


Percentage of Fatal and Serious Injuries

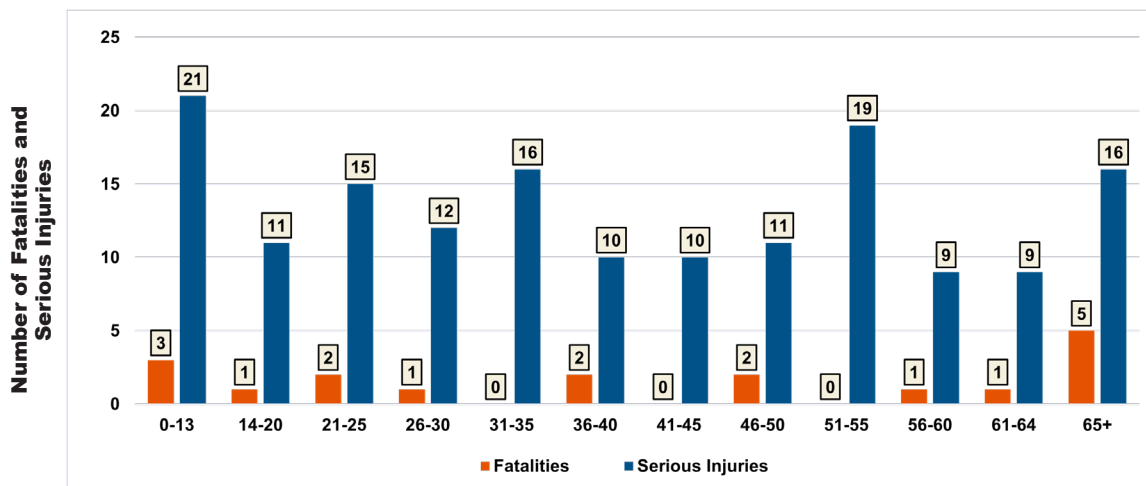
### Winter Months (Dec-Feb)



### Summer Months (Jun-Aug)



## Bicyclists FSI by Age



\* All data is sourced from the MDT 2014-2023 Crash Data, February 2025 Extract (Persons)  
Data current as of February 2025 and subject to change with subsequent updates.



**YOUNGER BICYCLISTS INVOLVED**  
(14-20 years of age)  
make up **10%** of all bicyclist FSI.



**OLDER BICYCLISTS INVOLVED**  
(65+ years of age)  
make up **12%** of all bicyclist FSI.

This document was printed at state expense. Information on the cost of publication may be obtained by contacting the Department of Administration. Alternative accessible formats of this document will be provided on request. Persons who need an alternative format should contact the Office of Civil Rights, Montana Department of Transportation, 2701 Prospect Avenue, PO Box 201001, Helena, MT 59620. Telephone 406-444-5416 or Montana Relay Service at 711.



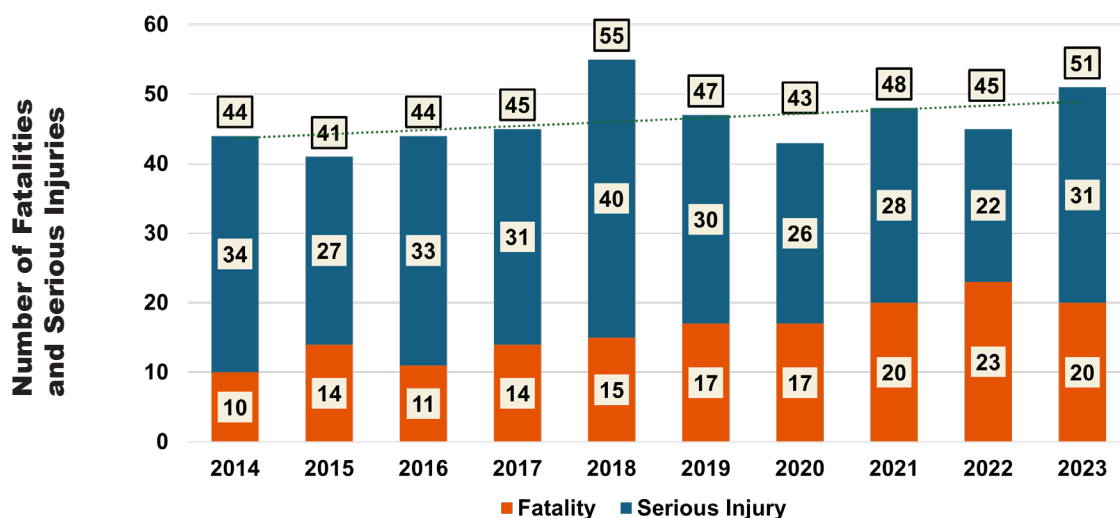
SAFE ROADS



## Pedestrians

In Montana, a pedestrian is defined as any person on foot and includes those using wheelchairs or other low-powered, mechanically propelled vehicles designed for disabled persons.

## Pedestrian Fatalities and Serious Injuries (FSI) by Year



5%

of total FSI

## Leading Factors of Pedestrian FSI

The 3 leading factors of pedestrian FSI are:



**20%**  
Impaired Drivers



**19%**  
Careless, Inattentive,  
and/or Distracted  
Driving



**6%**  
Speed Related

## Rural



40%

33% Impaired Drivers

19% Careless, Inattentive,  
and/or Distracted  
Drivers

8% Speed Related

## Urban



60%

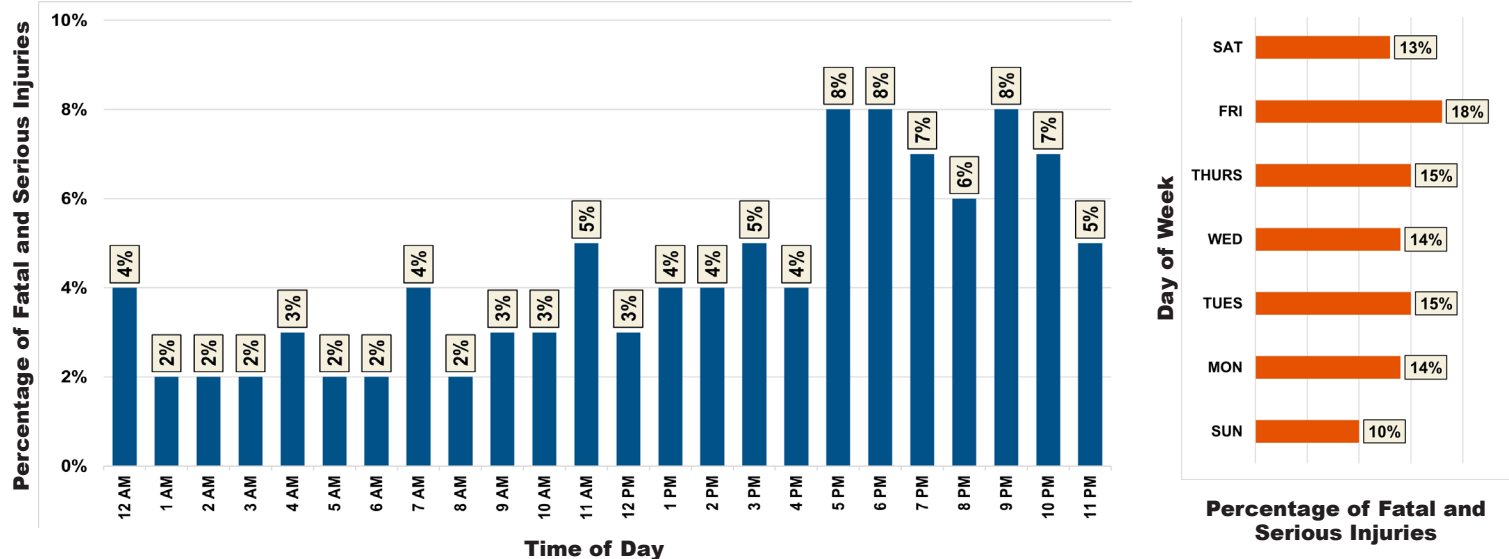
19% Careless, Inattentive,  
and/or Distracted  
Drivers

11% Impaired Drivers

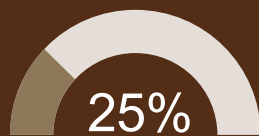
4% Speed Related

\* All data is sourced from the MDT 2014-2023 Crash Data, February 2025 Extract (Persons)  
Data current as of February 2025 and subject to change with subsequent updates.

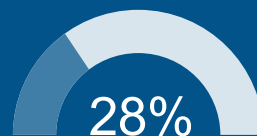
## Pedestrian Fatalities and Serious Injuries (FSI) by Time of Day, Week, and Year



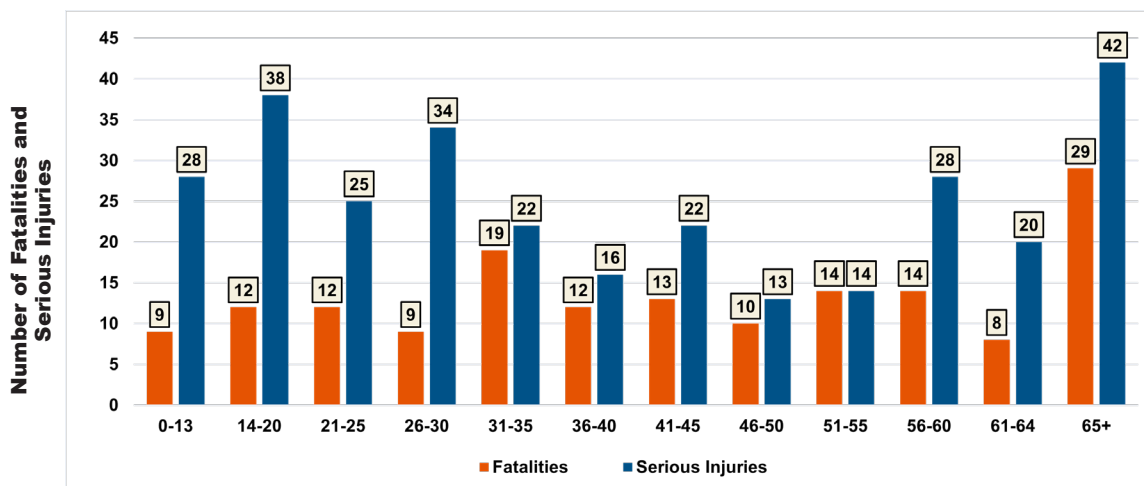
### Winter Months (Dec-Feb)



### Summer Months (Jun-Aug)



## Pedestrian FSI by Age



\* All data is sourced from the MDT 2014-2023 Crash Data, February 2025 Extract (Persons)  
Data current as of February 2025 and subject to change with subsequent updates.

**YOUNGER PEDESTRIANS INVOLVED**  
(14-20 years of age)  
make up 8% of all pedestrian FSI.

**OLDER PEDESTRIANS INVOLVED**  
(65+ years of age)  
make up 15% of all pedestrian FSI.

This document was printed at state expense. Information on the cost of publication may be obtained by contacting the Department of Administration. Alternative accessible formats of this document will be provided on request. Persons who need an alternative format should contact the Office of Civil Rights, Montana Department of Transportation, 2701 Prospect Avenue, PO Box 201001, Helena, MT 59620. Telephone 406-444-5416 or Montana Relay Service at 711.





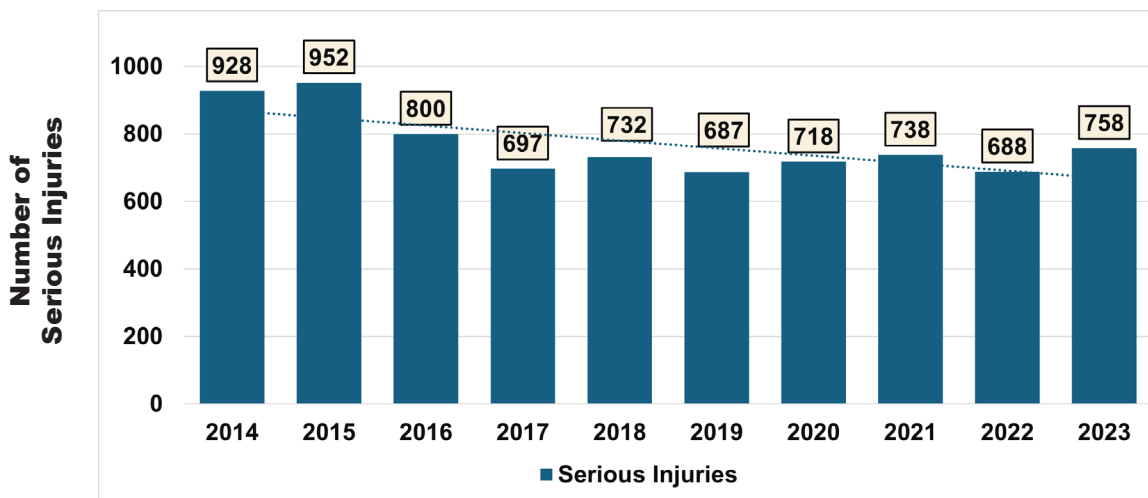
## EMERGENCY RESPONSE – POST-CRASH CARE



## Emergency Response – Post-Crash Care

Montana defines Emergency Response – Post-Crash Care as transporting people to a medical facility after a crash or crash-related incident, regardless of the transport method. This data reflects transport of serious injury victims only, as not all fatalities are transported by Emergency Medical Service providers.

### Emergency Response – Post-Crash Care Serious Injuries by Year



**77%**

of total fatal and  
serious injuries

### Leading Factors of Emergency Response – Post-Crash Care Serious Injuries

The 4 leading factors of emergency response – post-crash care serious injuries are:

**32%**  
Unrestrained  
Vehicle Occupants

**25%**  
Impaired Drivers

**24%**  
Careless, Inattentive,  
and/or Distracted  
Driving

**20%**  
Speed Related

**Rural**  
**71%**

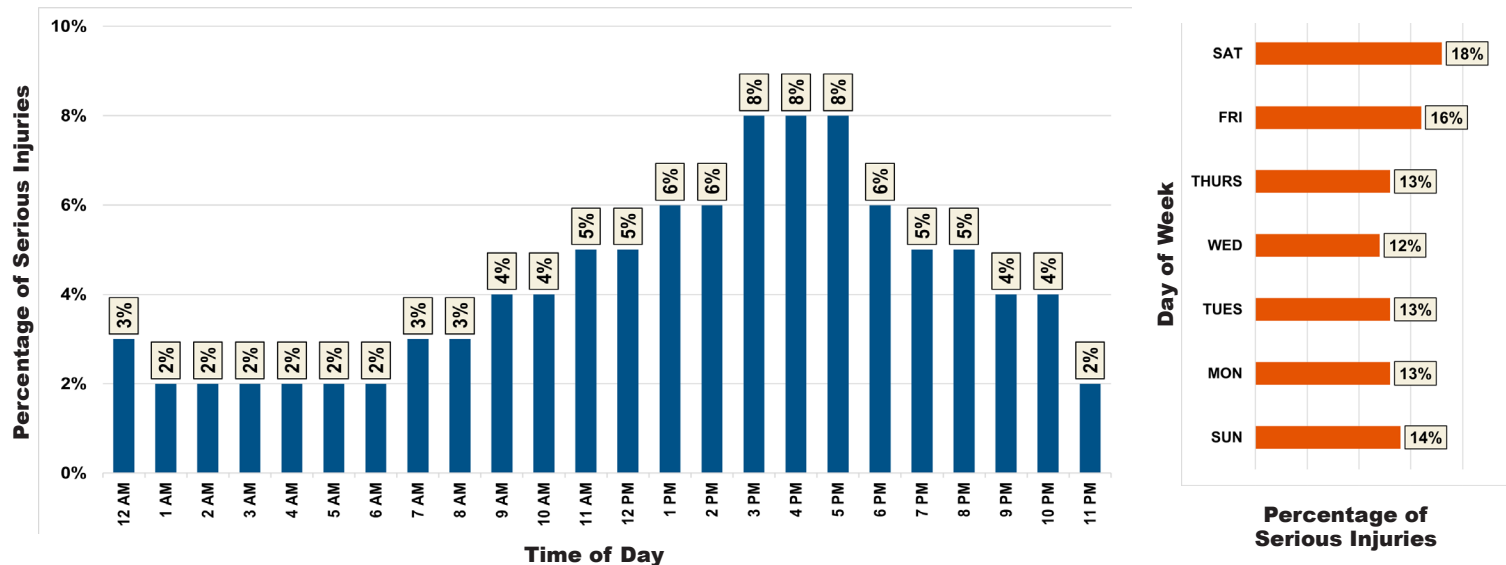
**36%** Unrestrained Vehicle Occupants  
**28%** Impaired Drivers  
**25%** Careless, Inattentive, and/or Distracted Drivers  
**22%** Speed Related

**Urban**  
**28%**

**32%** Careless, Inattentive, and/or Distracted Drivers  
**21%** Unrestrained Vehicle Occupants  
**18%** Impaired Drivers  
**14%** Speed Related

\* All data is sourced from the MDT 2014-2023 Crash Data, February 2025 Extract (Persons)  
Data current as of February 2025 and subject to change with subsequent updates.

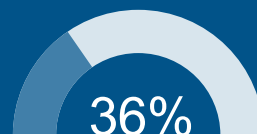
## Emergency Response – Post-Crash Care Serious Injuries by Time of Day, Week, and Year



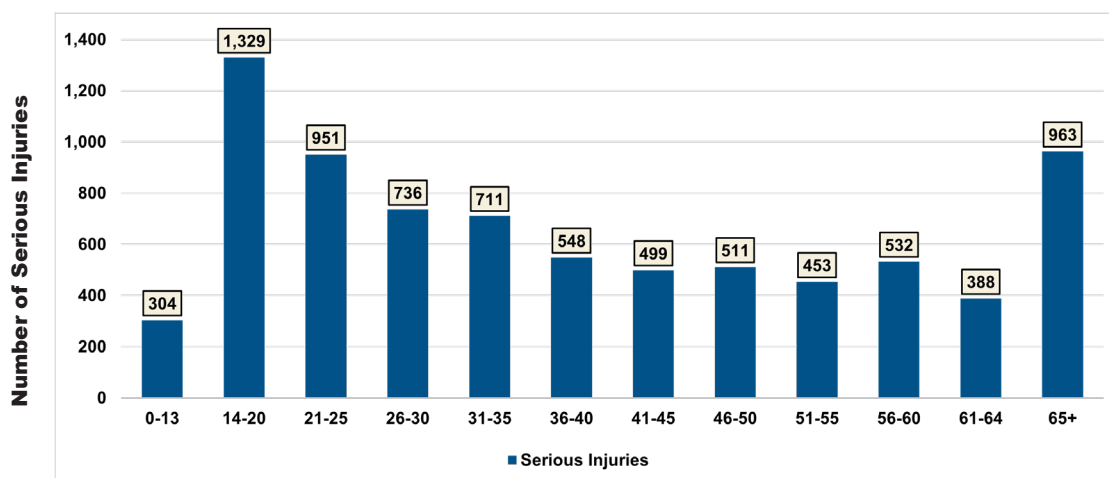
### Winter Months (Dec-Feb)



### Summer Months (Jun-Aug)



## Emergency Response – Post-Crash Care Serious Injuries by Age



\* All data is sourced from the MDT 2014-2023 Crash Data, February 2025 Extract (Persons)  
Data current as of February 2025 and subject to change with subsequent updates.



### YOUNGER DRIVERS INVOLVED (14-20 years of age)

make up **8%** of all emergency response – post-crash care serious injuries.



### OLDER DRIVERS INVOLVED (65+ years of age)

make up **10%** of all emergency response – post-crash care serious injuries

This document was printed at state expense. Information on the cost of publication may be obtained by contacting the Department of Administration. Alternative accessible formats of this document will be provided on request. Persons who need an alternative format should contact the Office of Civil Rights, Montana Department of Transportation, 2701 Prospect Avenue, PO Box 201001, Helena, MT 59620. Telephone 406-444-5416 or Montana Relay Service at 711.



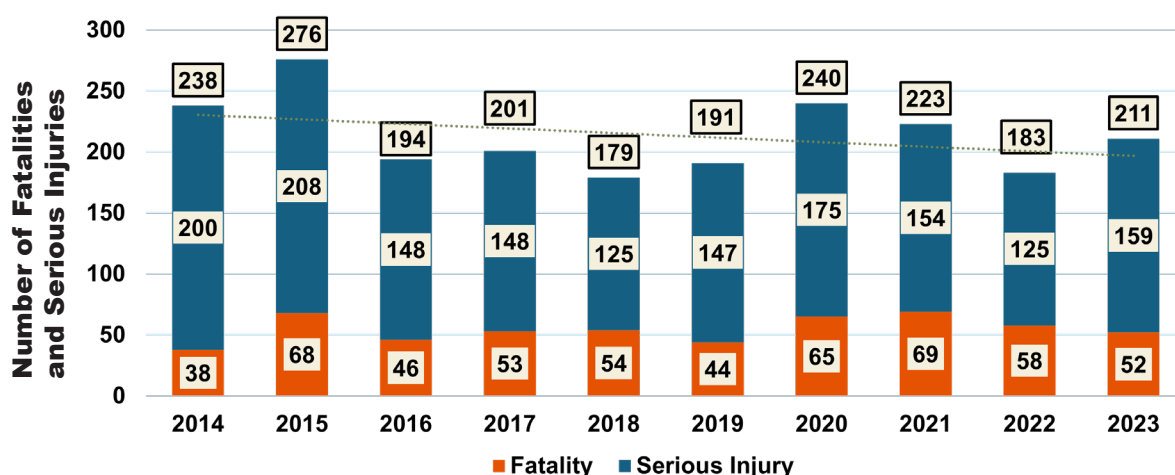
## SAFE SPEEDS/ SAFE VEHICLES



## Speed Related

Montana has defined speed related crashes as drivers suspected by the reporting officer to have exceeded the stated speed limit or to have been driving too fast for conditions prior to the crash.

### Speed Related Fatalities and Serious Injuries (FSI) by Year



# 21%

of total FSI

### Leading Factors of Speed Related FSI

The 5 leading factors of speed related FSI are:



**70%**  
Roadway  
Departures



**41%**  
Unrestrained  
Vehicle Occupants



**32%**  
Impaired Drivers



**17%**  
Careless, Inattentive,  
and/or Distracted  
Driving



**17%**  
Erratic, Reckless,  
Negligent, and/or  
Aggressive Driving

#### Rural



**79%**

- 85% Roadway Departure
- 45% Impaired Drivers
- 42% Unrestrained Vehicle Occupants
- 25% Careless, Inattentive, and/or Distracted Drivers
- 25% Erratic, Reckless, Negligent, and/or Aggressive Driving

#### Urban

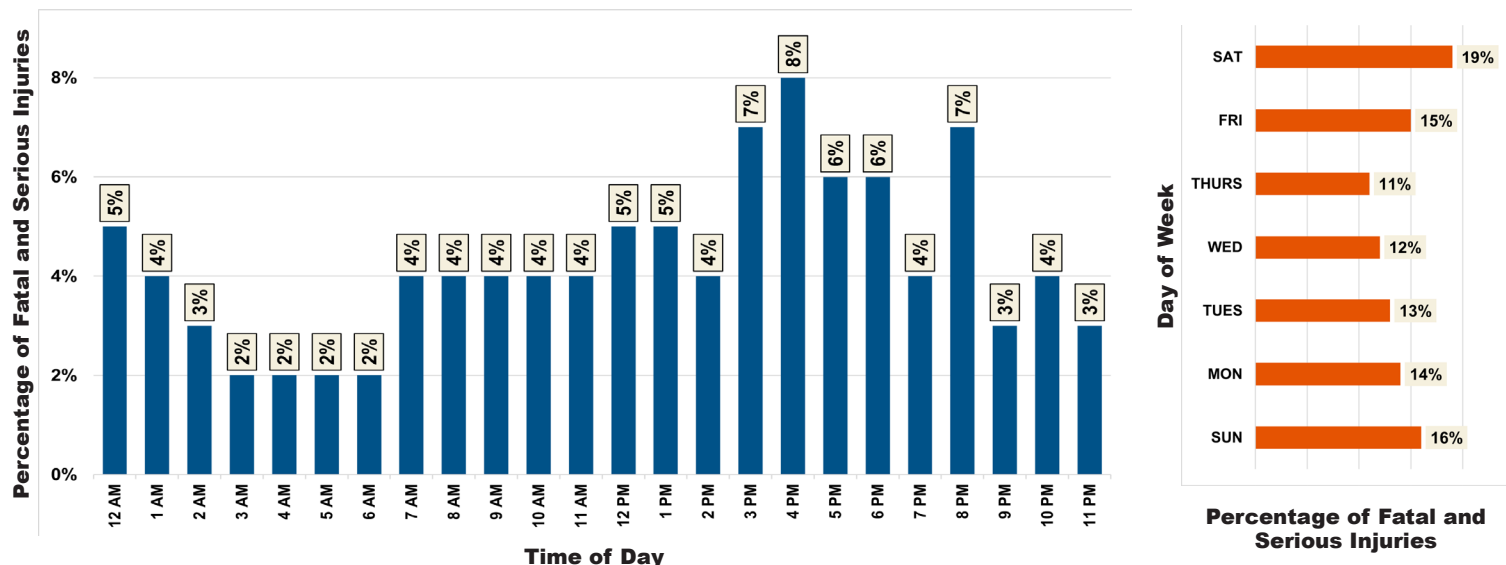


**20%**

- 45% Roadway Departure
- 38% Unrestrained Vehicle Occupants
- 35% Impaired Drivers
- 18% Careless, Inattentive, and/or Distracted Drivers
- 18% Erratic, Reckless, Negligent, and/or Aggressive Driving

\* All data is sourced from the MDT 2014-2023 Crash Data, February 2025 Extract (Persons)  
Data current as of February 2025 and subject to change with subsequent updates.

## Speed Related Fatalities and Serious Injuries (FSI) by Time of Day, Week, and Year



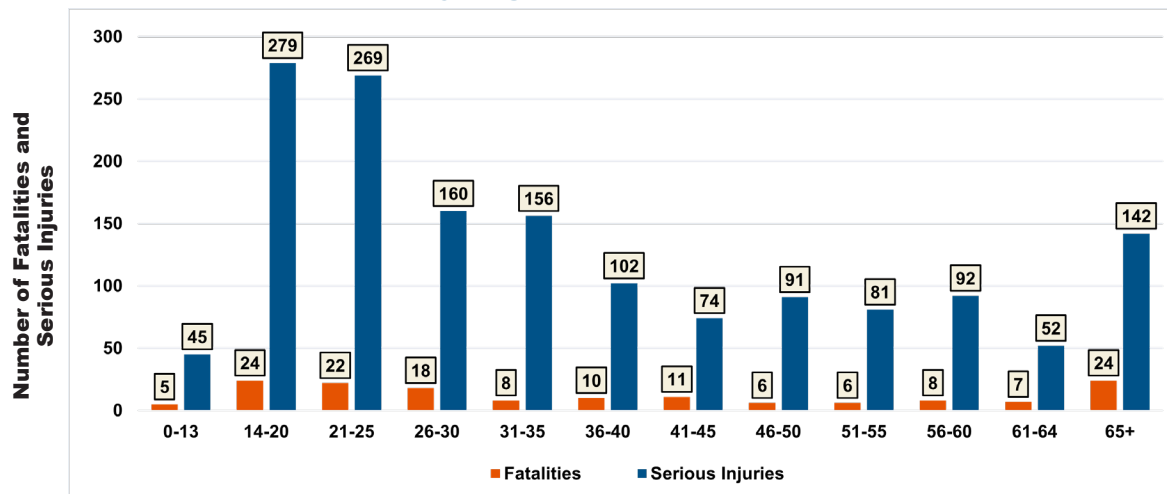
### Winter Months (Dec-Feb)

29%

### Summer Months (Jun-Aug)

28%

## Speed Related FSI by Age



\* All data is sourced from the MDT 2014-2023 Crash Data, February 2025 Extract (Persons)  
Data current as of February 2025 and subject to change with subsequent updates.



**YOUNGER DRIVERS INVOLVED**  
**(14-20 years of age)**  
make up **7%** of all speed related FSI.



**OLDER DRIVERS INVOLVED**  
**(65+ years of age)**  
make up **10%** of all speed related FSI.

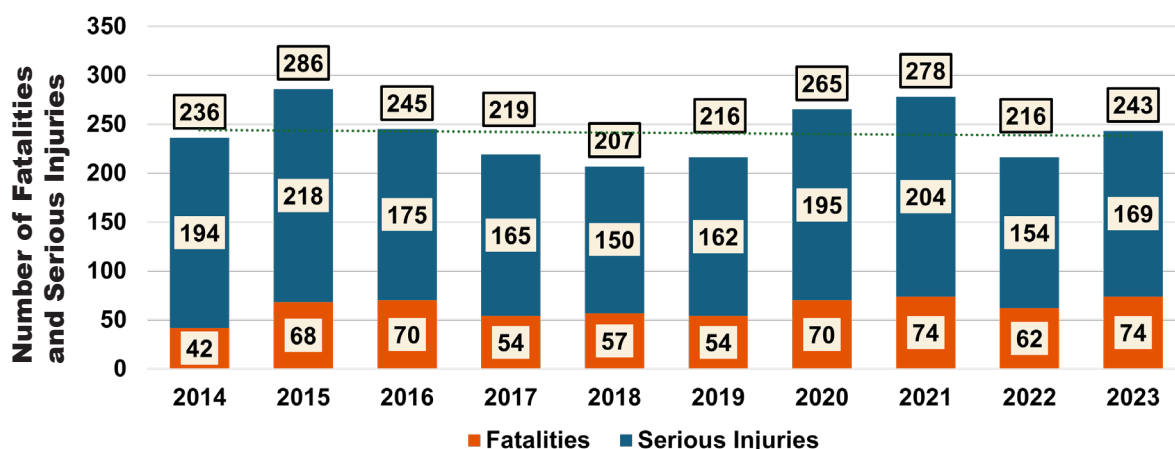
This document was printed at state expense. Information on the cost of publication may be obtained by contacting the Department of Administration. Alternative accessible formats of this document will be provided on request. Persons who need an alternative format should contact the Office of Civil Rights, Montana Department of Transportation, 2701 Prospect Avenue, PO Box 201001, Helena, MT 59620. Telephone 406-444-5416 or Montana Relay Service at 711.

## Comprehensive Highway Safety Plan (CHSP)

→ Erratic, Reckless, Negligent and/or Aggressive Driving Fact

SAFE SPEEDS/  
SAFE VEHICLESErratic, Reckless, Negligent,  
and/or Aggressive Driving

Montana has defined erratic, reckless, negligent and/or aggressive driving as operating a vehicle with willful disregard for safety through behaviors like erratic lane changes, sudden speed variations, tailgating, cutting off others, or displaying extreme aggression toward other road users.

Factors of Erratic, Reckless, Negligent, and/or Aggressive Driving  
Related Fatalities and Serious Injuries (FSI) by Year

24%

of total FSI

Leading Factors of Erratic, Reckless, Negligent, and/or Aggressive  
Driving Related FSI

The 4 leading factors of erratic, reckless, negligent, and/or aggressive driving related FSI are:



74%

Roadway Departures



62%

Impaired Drivers



55%

Unrestrained  
Vehicle Occupants

25%

Speed Related

## Rural



83%

78% Roadway Departures

63% Impaired Drivers

58% Unrestrained Vehicle  
Occupants

23% Speed Related

## Urban



16%

60% Impaired Drivers

51% Roadway Departures

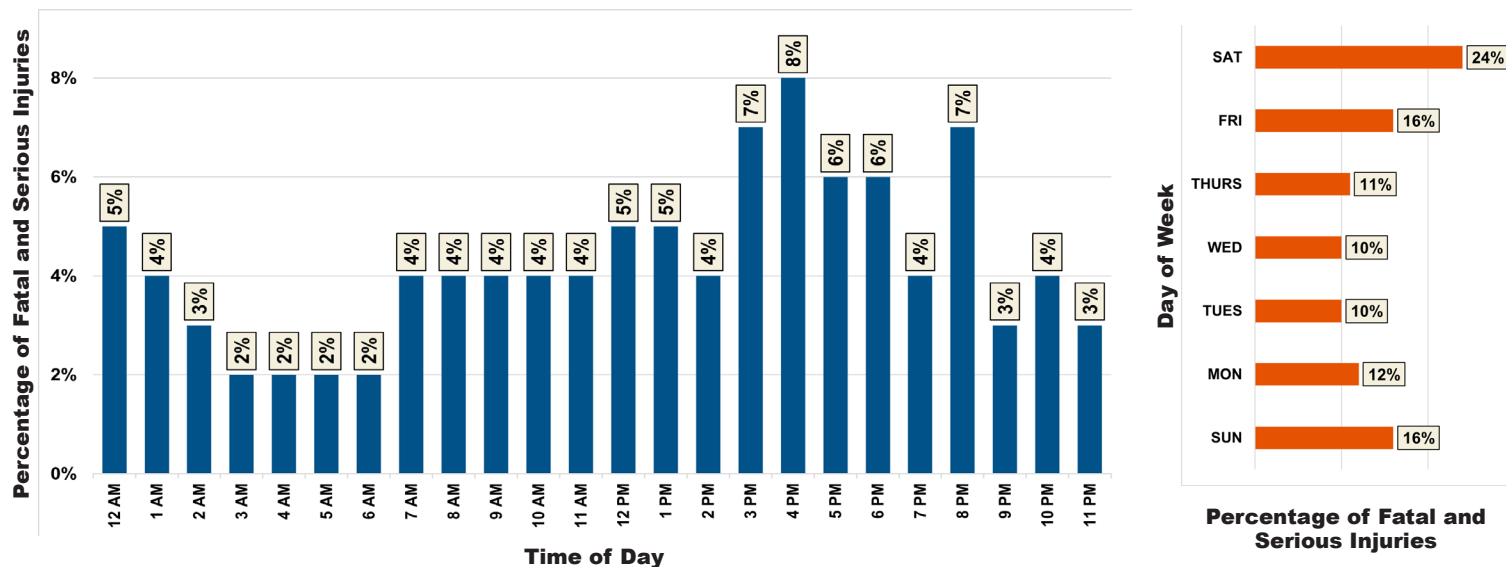
42% Unrestrained Vehicle  
Occupants

31% Speed Related

\* All data is sourced from the MDT 2014-2023 Crash Data, February 2025 Extract (Persons)  
Data current as of February 2025 and subject to change with subsequent updates.



## Erratic, Reckless, Negligent, and/or Aggressive Driving Related Fatalities and Serious Injuries (FSI) by Time of Day, Week, and Year



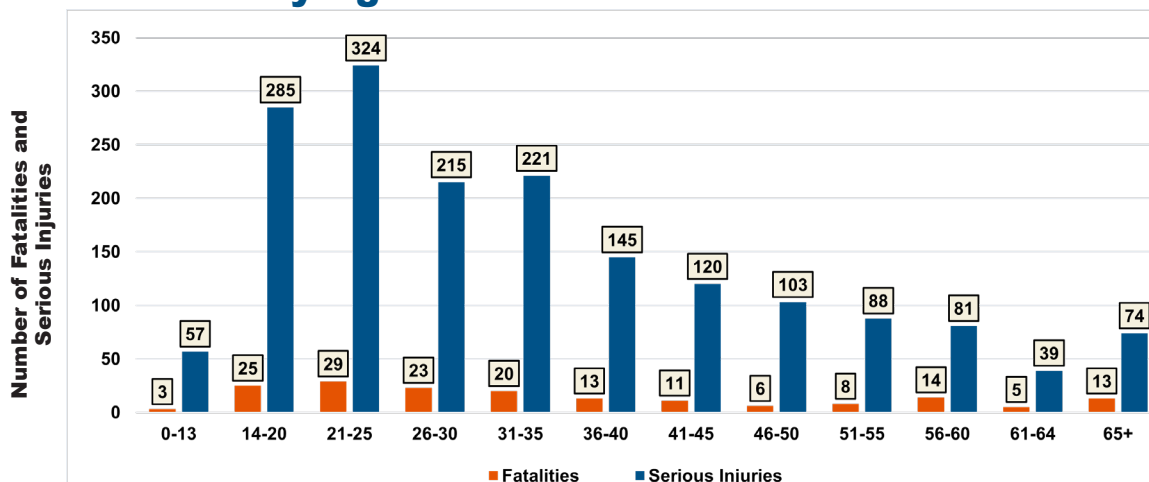
### Winter Months (Dec-Feb)

16%

### Summer Months (Jun-Aug)

35%

## Erratic, Reckless, Negligent, and/or Aggressive Driving Related FSI by Age



### YOUNGER DRIVERS INVOLVED

(14-20 years of age)

make up **4%** of all erratic, reckless, negligent, and/or aggressive driving related FSI.



### OLDER DRIVERS INVOLVED

(65+ years of age) make up **8%** of all erratic, reckless, negligent, and/or aggressive driving related FSI.

\* All data is sourced from the MDT 2014-2023 Crash Data, February 2025 Extract (Persons)  
Data current as of February 2025 and subject to change with subsequent updates.

This document was printed at state expense. Information on the cost of publication may be obtained by contacting the Department of Administration. Alternative accessible formats of this document will be provided on request. Persons who need an alternative format should contact the Office of Civil Rights, Montana Department of Transportation, 2701 Prospect Avenue, PO Box 201001, Helena, MT 59620. Telephone 406-444-5416 or Montana Relay Service at 711.





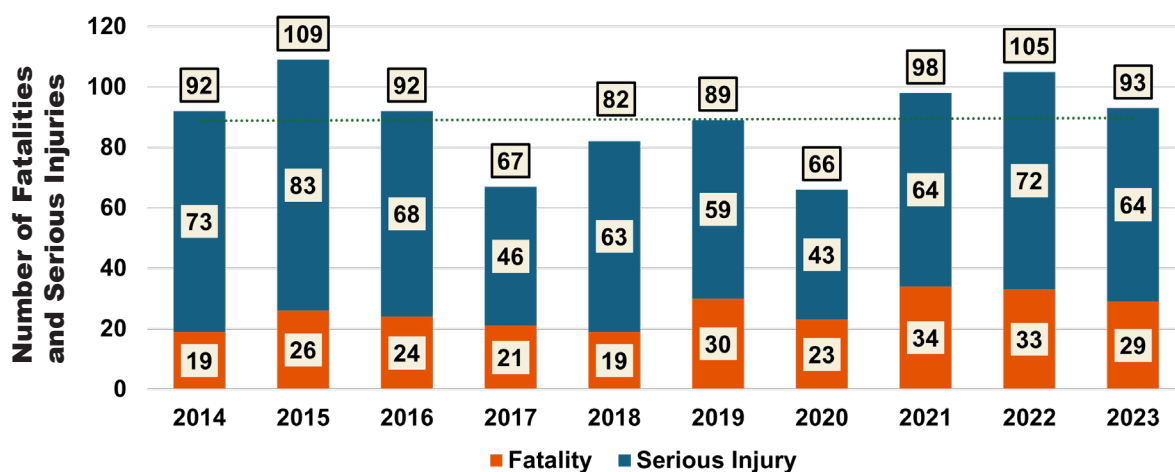
## SAFE SPEEDS/ SAFE VEHICLES



## Large Vehicle

Montana has defined large vehicles as all heavy trucks 10,000 + pounds, and busses. (i.e. a van, bus, large truck, motor home, ambulance, fire truck, tow truck, farm vehicle, or construction vehicle).

### Large Vehicle Involved Fatalities and Serious Injuries (FSI) by Year



**9%**

of total FSI

### Leading Factors of Large Vehicle Involved FSI

The 4 leading factors of Large Vehicle Involved FSI are:



**43%**  
Roadway  
Departures



**28%**  
Careless, Inattentive,  
and/or Distracted  
Driving



**27%**  
Unrestrained  
Vehicle Occupants



**20%**  
Impaired Drivers



**Rural**

**77%**

- 49%** Roadway Departures
- 30%** Careless, Inattentive, and/or Distracted Drivers
- 27%** Unrestrained Vehicle Occupants
- 22%** Speed Related



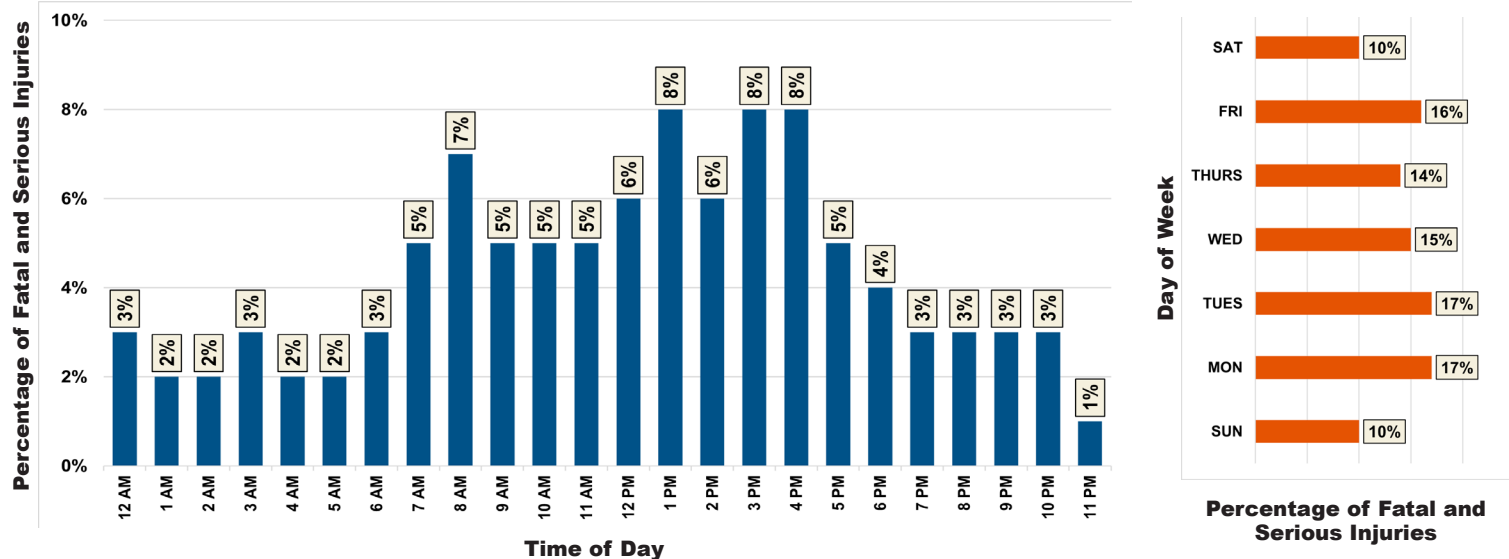
**Urban**

**23%**

- 28%** Unrestrained Vehicle Occupants
- 24%** Roadway Departures
- 23%** Speed Related
- 21%** Careless, Inattentive, and/or Distracted Drivers

\* All data is sourced from the MDT 2014-2023 Crash Data, February 2025 Extract (Persons)  
Data current as of February 2025 and subject to change with subsequent updates.

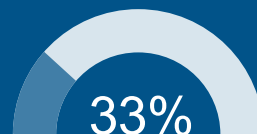
## Large Vehicle Involved Fatalities and Serious Injuries (FSI) by Time of Day, Week, and Year



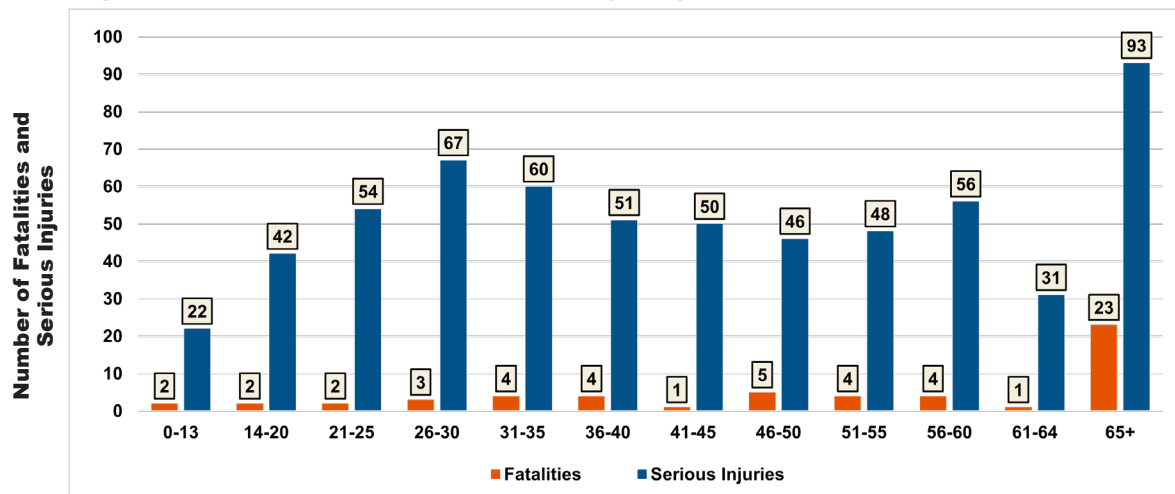
### Winter Months (Dec-Feb)



### Summer Months (Jun-Aug)



## Large Vehicle Involved FSI by Age



**YOUNGER DRIVERS INVOLVED**  
(14-20 years of age)  
make up **13%** of all large vehicle involved FSI.



**OLDER DRIVERS INVOLVED**  
(65+ years of age)  
make up **4%** of all large vehicle involved FSI.

\* All data is sourced from the MDT 2014-2023 Crash Data, February 2025 Extract (Persons)  
Data current as of February 2025 and subject to change with subsequent updates.

This document was printed at state expense. Information on the cost of publication may be obtained by contacting the Department of Administration. Alternative accessible formats of this document will be provided on request. Persons who need an alternative format should contact the Office of Civil Rights, Montana Department of Transportation, 2701 Prospect Avenue, PO Box 201001, Helena, MT 59620. Telephone 406-444-5416 or Montana Relay Service at 711.



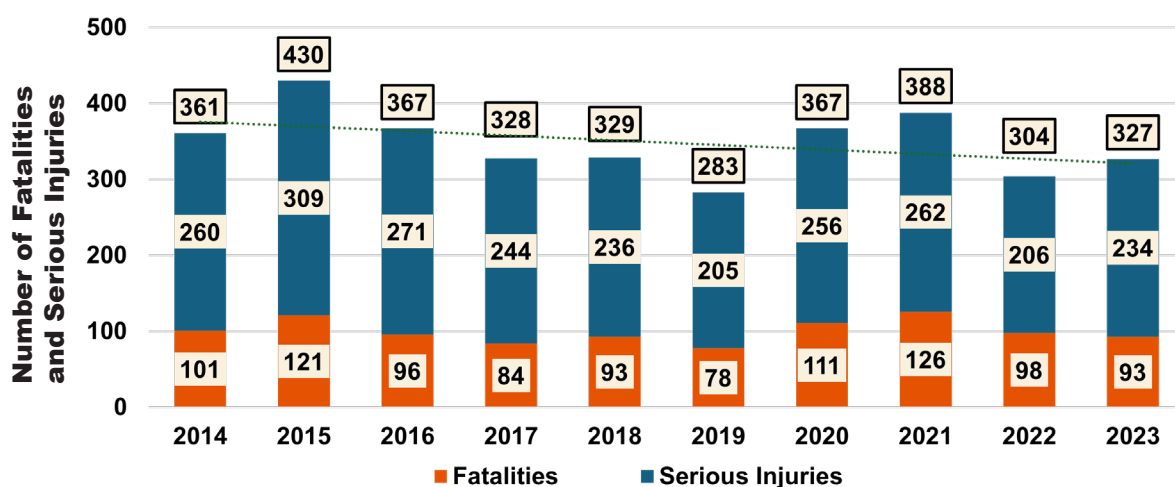
## SAFE ROAD USERS



## Unrestrained Vehicle Occupant

An unrestrained vehicle occupant is defined as a vehicle occupant not using or improperly using available vehicle restraints, including lap belt, shoulder belt, or automatic belt.

### Unrestrained Vehicle Occupant Fatalities and Serious Injuries (FSI) by Year



# 35%

of total FSI

### Leading Factors of Unrestrained Vehicle Occupant FSI

The 4 leading factors of Unrestrained Vehicle Occupant FSI are:



## 74%

Roadway Departures



## 44%

Impaired Drivers



## 25%

Speed Related



## 22%

Careless, Inattentive, and/or Distracted Driving

#### Rural



## 82%

81% Roadway Departures

45% Impaired Drivers

25% Speed Related

23% Careless, Inattentive, and/or Distracted Drivers

#### Urban



## 17%

41% Roadway Departures

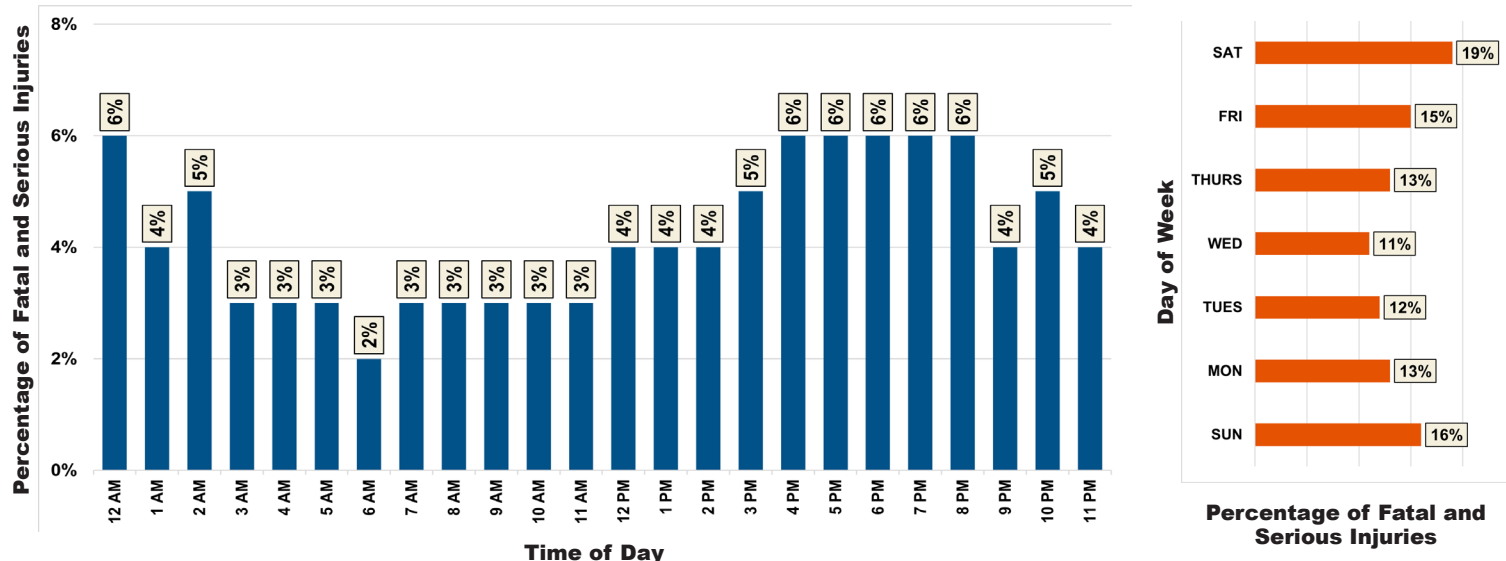
39% Impaired Drivers

26% Speed Related

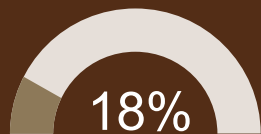
20% Careless, Inattentive, and/or Distracted Drivers

\* All data is sourced from the MDT 2014-2023 Crash Data, February 2025 Extract (Persons)  
Data current as of February 2025 and subject to change with subsequent updates.

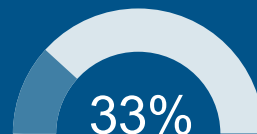
## Unrestrained Vehicle Occupant Fatalities and Serious Injuries (FSI) by Time of Day, Week, and Year



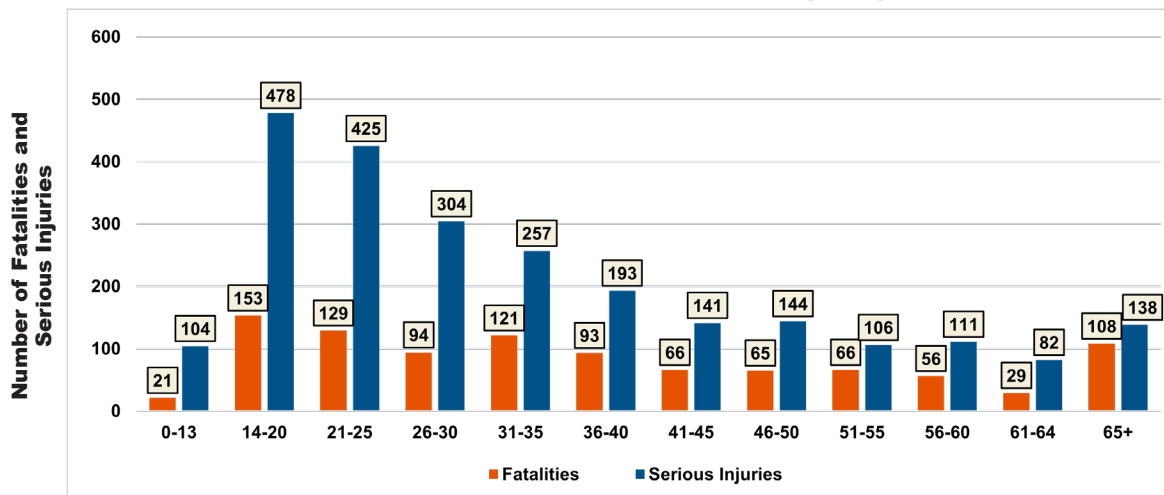
### Winter Months (Dec-Feb)



### Summer Months (Jun-Aug)



## Unrestrained Vehicle Occupant FSI by Age



\* All data is sourced from the MDT 2014-2023 Crash Data, February 2025 Extract (Persons)  
Data current as of February 2025 and subject to change with subsequent updates.



### YOUNGER DRIVERS INVOLVED

(14-20 years of age)

make up **6%** of all unrestrained vehicle occupant FSI.



### OLDER DRIVERS INVOLVED

(65+ years of age)

make up **10%** of all unrestrained vehicle occupant FSI.

This document was printed at state expense. Information on the cost of publication may be obtained by contacting the Department of Administration. Alternative accessible formats of this document will be provided on request. Persons who need an alternative format should contact the Office of Civil Rights, Montana Department of Transportation, 2701 Prospect Avenue, PO Box 201001, Helena, MT 59620. Telephone 406-444-5416 or Montana Relay Service at 711.



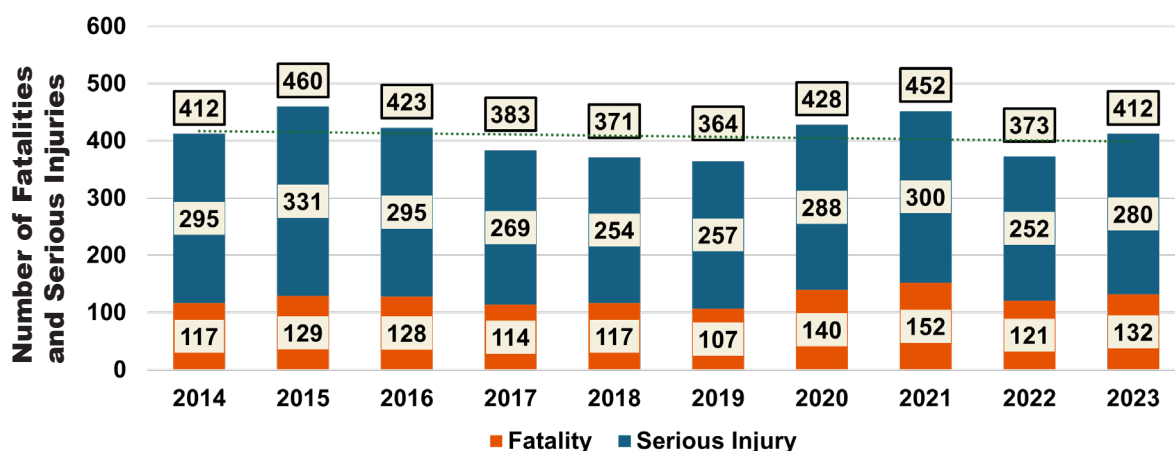
## SAFE ROAD USERS



## Impaired Driver

Montana defines impaired driving as a motor vehicle driver or motorcycle operator suspected of drug or alcohol use by the reporting officer and a crash involving at least one impaired driver or more impaired drivers. MDT Impaired Driver data counts all fatalities and serious injuries related to all persons involved and affected by an impaired driver.

### Impaired Driver Related Fatalities and Serious Injuries (FSI) by Year



**41%**

of total FSI

### Leading Factors of Impaired Driver Related FSI

The 4 leading factors of impaired driver related FSI are:



**72%**

Roadway Departures



**54%**

Unrestrained  
Vehicle Occupants



**27%**

Careless, Inattentive,  
and/or Distracted  
Driving



**24%**

Speed Related

#### Rural



**81%**

**78%** Roadway Departures

**55%** Unrestrained Vehicle  
Occupants

**27%** Careless, Inattentive,  
and/or Distracted  
Drivers

**23%** Speed Related

#### Urban



**18%**

**46%** Unrestrained Vehicle  
Occupants

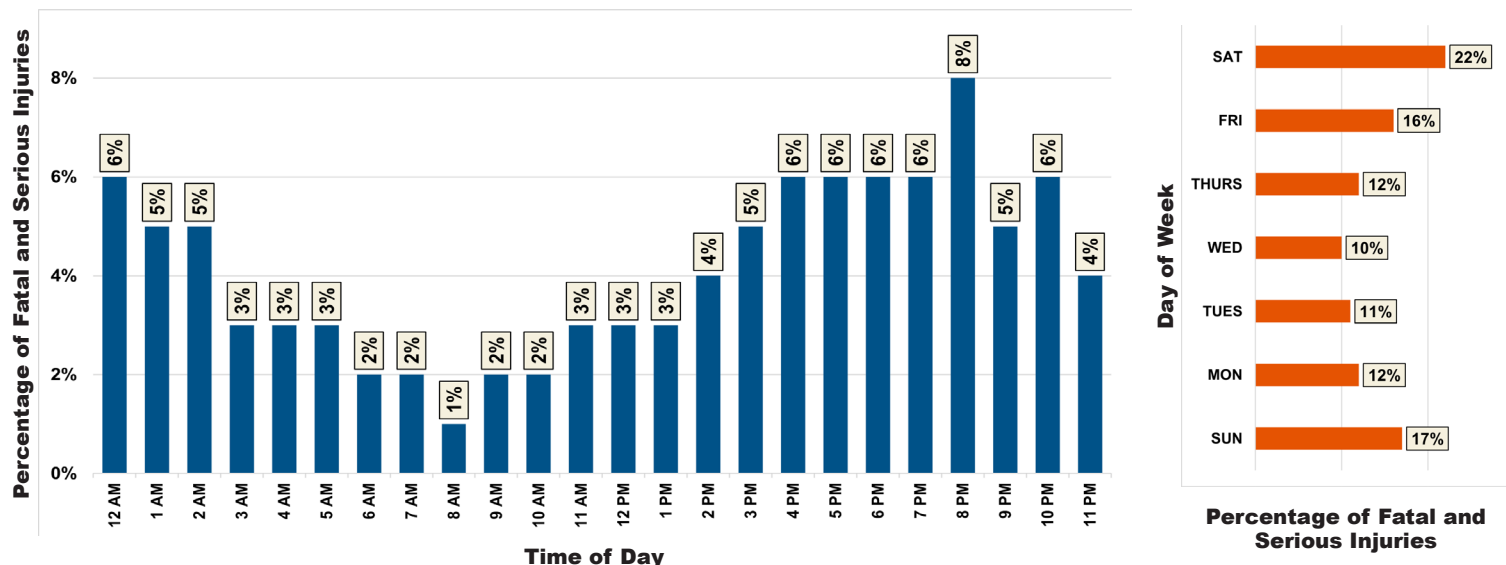
**45%** Roadway Departures

**31%** Speed Related

**25%** Careless, Inattentive,  
and/or Distracted  
Drivers

\* All data is sourced from the MDT 2014-2023 Crash Data, February 2025 Extract (Persons)  
Data current as of February 2025 and subject to change with subsequent updates.

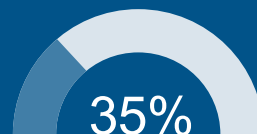
## Impaired Driver Related Fatalities and Serious Injuries (FSI) by Time of Day, Week, and Year



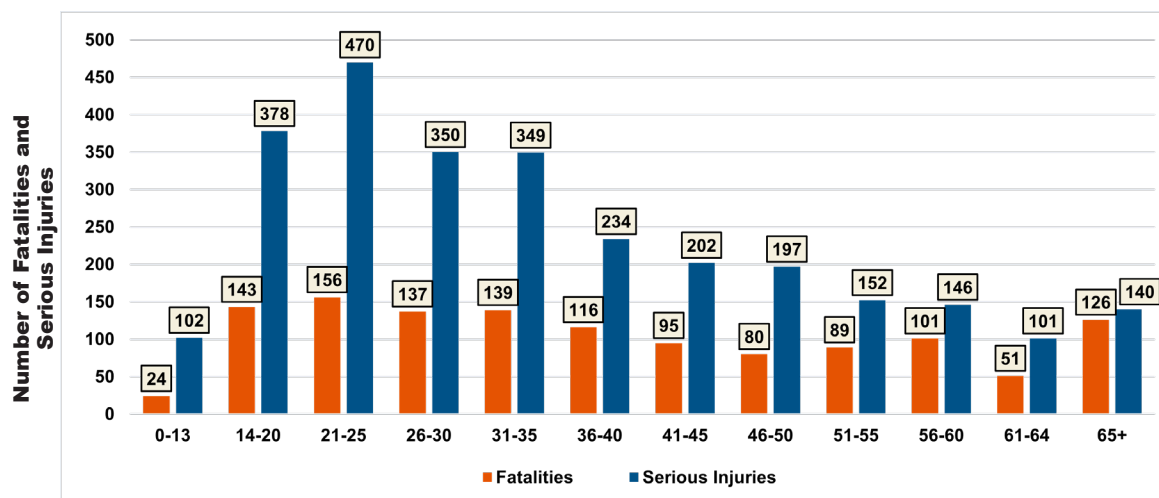
### Winter Months (Dec-Feb)



### Summer Months (Jun-Aug)



## Impaired Driver Related FSI by Age



### YOUNGER DRIVERS INVOLVED

(14-20 years of age)

make up 7% of all impaired driver related FSI.



### OLDER DRIVERS INVOLVED

(65+ years of age)

make up 5% of all impaired driver related FSI.

\* All data is sourced from the MDT 2014-2023 Crash Data, February 2025 Extract (Persons)  
Data current as of February 2025 and subject to change with subsequent updates.

This document was printed at state expense. Information on the cost of publication may be obtained by contacting the Department of Administration. Alternative accessible formats of this document will be provided on request. Persons who need an alternative format should contact the Office of Civil Rights, Montana Department of Transportation, 2701 Prospect Avenue, PO Box 201001, Helena, MT 59620. Telephone 406-444-5416 or Montana Relay Service at 711.





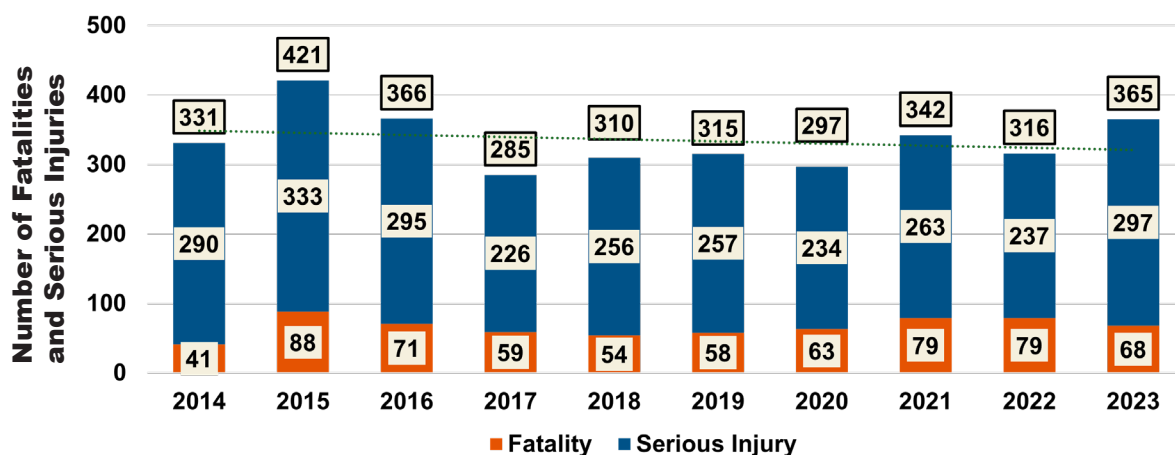
## SAFE ROAD USERS



## Careless, Inattentive, and/or Distracted Driving

Montana defines careless, inattentive, and/or distracted driving as a driver suspected by the reporting officer to have been inattentive, careless, improper driving or driving without due care or use of cell phone or other electronic device prior to the crash.

### Careless, Inattentive, and/or Distracted Driving Related Fatalities and Serious Injuries (FSI) by Year



**34%**  
of total FSI

### Leading Factors of Careless, Inattentive, and/or Distracted Driving Related FSI

The 4 leading factors of careless, inattentive, and/or distracted driving related FSI are:



**60%**  
Roadway  
Departures



**34%**  
Unrestrained  
Vehicle Occupants



**33%**  
Impaired Drivers



**16%**  
Speed Related

#### Rural



**74%**

**71%** Roadway Departures  
**38%** Unrestrained Vehicle Occupants  
**36%** Impaired Driver  
**17%** Speed Related

#### Urban

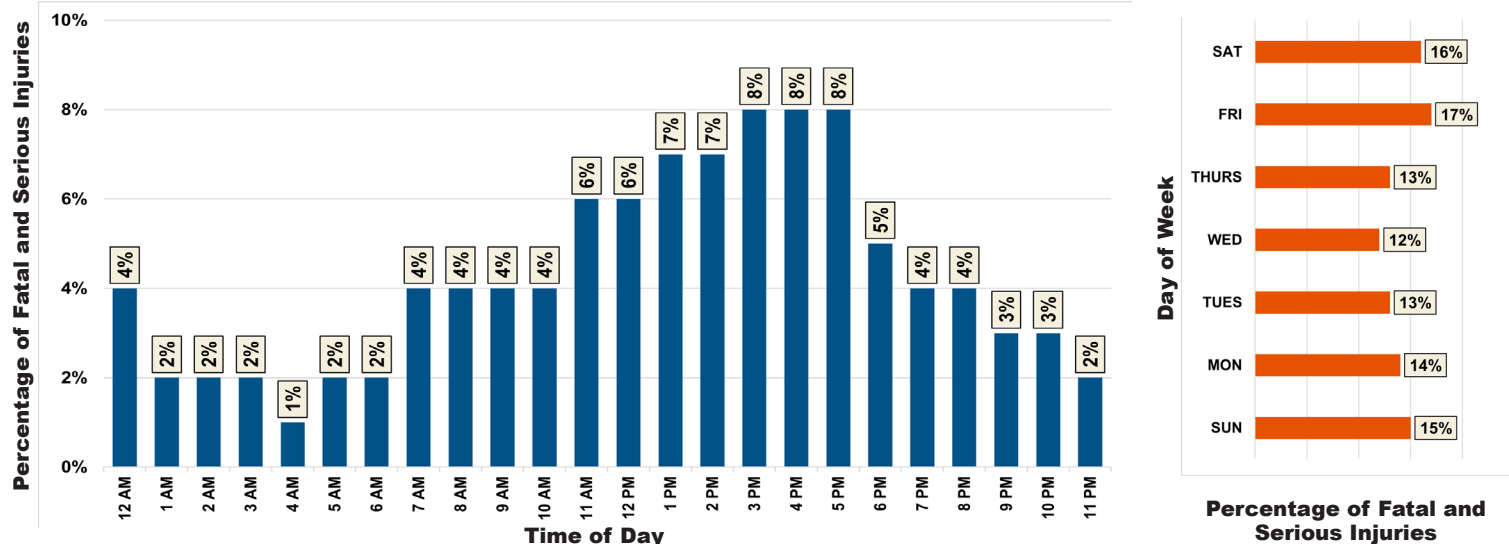


**24%**

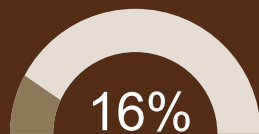
**22%** Roadway Departures  
**22%** Unrestrained Vehicle Occupants  
**21%** Impaired Driver  
**13%** Speed Related

\* All data is sourced from the MDT 2014-2023 Crash Data, February 2025 Extract (Persons)  
Data current as of February 2025 and subject to change with subsequent updates.

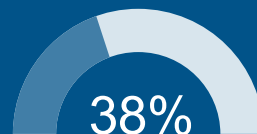
## Careless, Inattentive, and/or Distracted Driving Related Fatalities and Serious Injuries (FSI) by Time of Day, Week, and Year



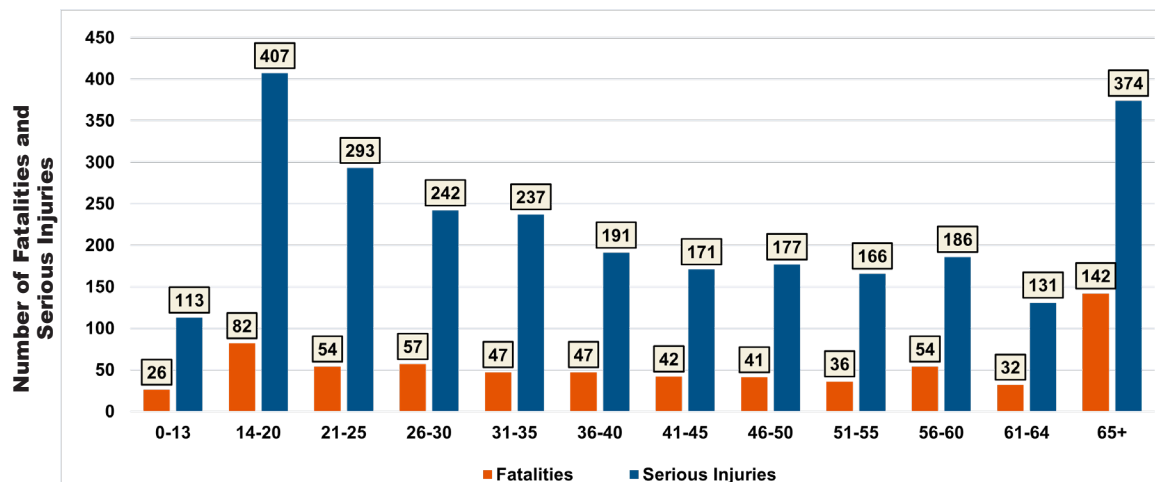
### Winter Months (Dec-Feb)



### Summer Months (Jun-Aug)



## Careless, Inattentive, and/or Distracted Driving Related FSI by Age



### YOUNGER DRIVERS INVOLVED (14-20 years of age)

make up **12%** of all careless, inattentive, and/or distracted driving related FSI.



### OLDER DRIVERS INVOLVED (65+ years of age)

make up **8%** of a careless, inattentive, and/or distracted driving related FSI.

\* All data is sourced from the MDT 2014-2023 Crash Data, February 2025 Extract (Persons)  
Data current as of February 2025 and subject to change with subsequent updates.

This document was printed at state expense. Information on the cost of publication may be obtained by contacting the Department of Administration. Alternative accessible formats of this document will be provided on request. Persons who need an alternative format should contact the Office of Civil Rights, Montana Department of Transportation, 2701 Prospect Avenue, PO Box 201001, Helena, MT 59620. Telephone 406-444-5416 or Montana Relay Service at 711.