



**VISION ZERO**  
zero deaths · zero serious injuries  
MONTANA DEPARTMENT  
OF TRANSPORTATION

# Welcome

Thank you for joining the Montana Department of Transportation for the **Cyr Bridge Rehabilitation** and **Daigle Lane Railroad Crossing** projects online open house.

This presentation will:

- Provide an overview of each project
- Talk about the project schedules and next steps in the development process
- Provide an opportunity to ask questions





**VISION ZERO**  
zero deaths · zero serious injuries  
MONTANA DEPARTMENT  
OF TRANSPORTATION

# About the Projects





# MDT Bridge Management Process

The MDT Bridge Bureau is tasked with keeping Montana's bridges safe, resilient, economical, and reliable.

The Bridge Bureau has two sections: Bridge Management and Bridge Design.





# Cyr Bridge Project Overview

The Montana Department of Transportation (MDT) is rehabilitating the Cyr Bridge located on Old Highway 10 over the Clark Fork River west of Alberton. MDT is proposing to replace the bridge deck (driving surface), and repair and strengthen the existing steel superstructure.



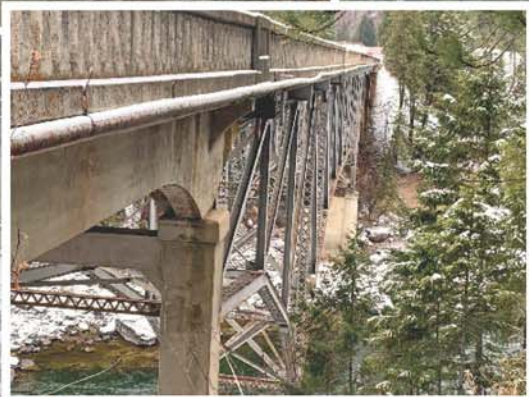


# Purpose and Need

The Cyr Bridge was originally constructed in 1932 and is showing signs of its age. Due to the age and condition of the bridge, it has a reduced weight limit and cannot currently handle legal loads.

The proposed improvements will:

- improve safety
- increase the weight capacity of the bridge to handle legal loads
- extend the service life of the bridge





# Why rehabilitation instead of replacement?

Rehabilitation of the existing bridge will provide numerous benefits, such as:

- Reducing cost.
- Reducing construction time and inconvenience to the traveling public.
- Preserving the historical appearance of the bridge.



Aesthetic features will be maintained to a reasonable extent as long as the bridge can meet legal load requirements and remains safe for motorists.



# Proposed Improvements

## WEST APPROACH

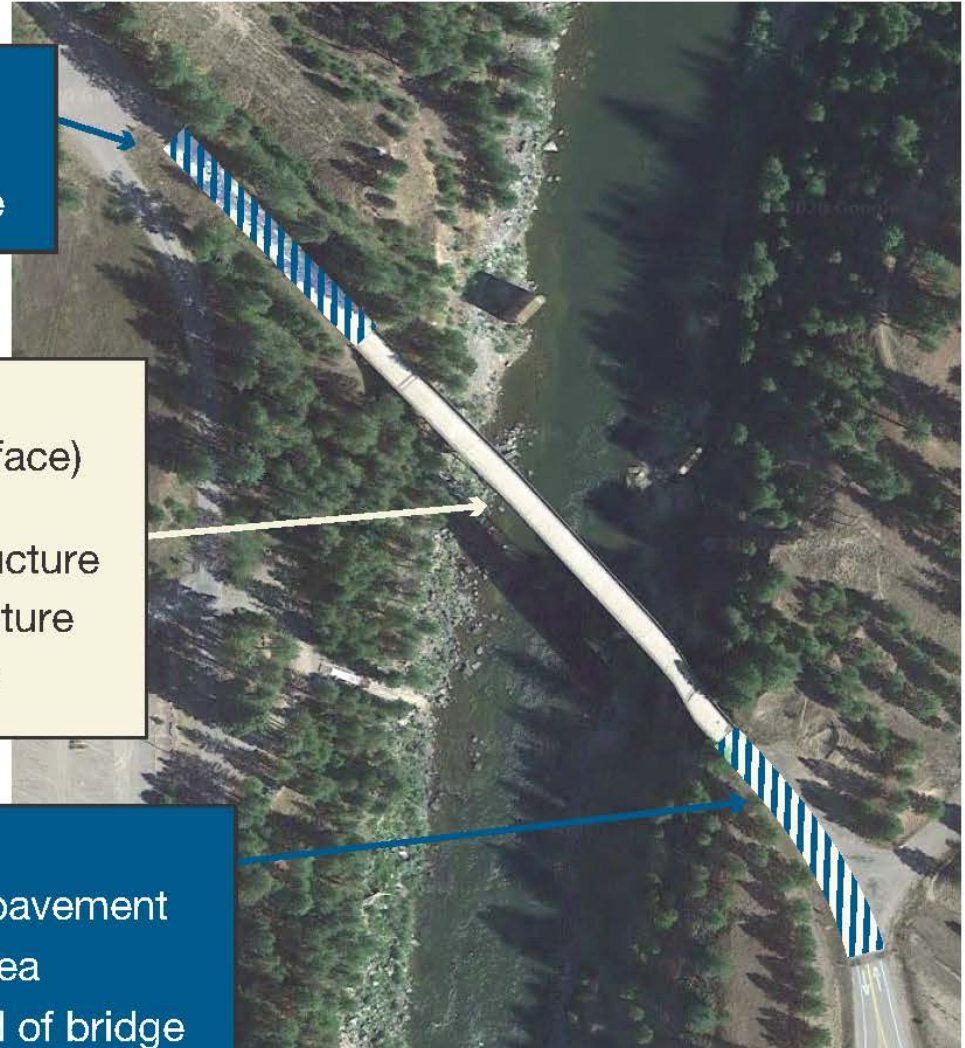
- Resurface approx. 200' of pavement
- Add approach railing at end of bridge

## BRIDGE

- Replace existing bridge deck (driving surface) and railing
- Repair and strengthen the steel superstructure
- Clean and spot paint the steel superstructure
- Strengthen the concrete approach spans

## EAST APPROACH

- Resurface approx. 150' of pavement
- Pave the turnout parking area
- Add approach railing at end of bridge





# Construction Traffic Control

MDT anticipates closing the bridge to traffic during construction for the safety of motorists and workers. The existing bridge is narrow by today's standards and is not stable enough to allow for traffic and construction equipment/workers during deck replacement work.





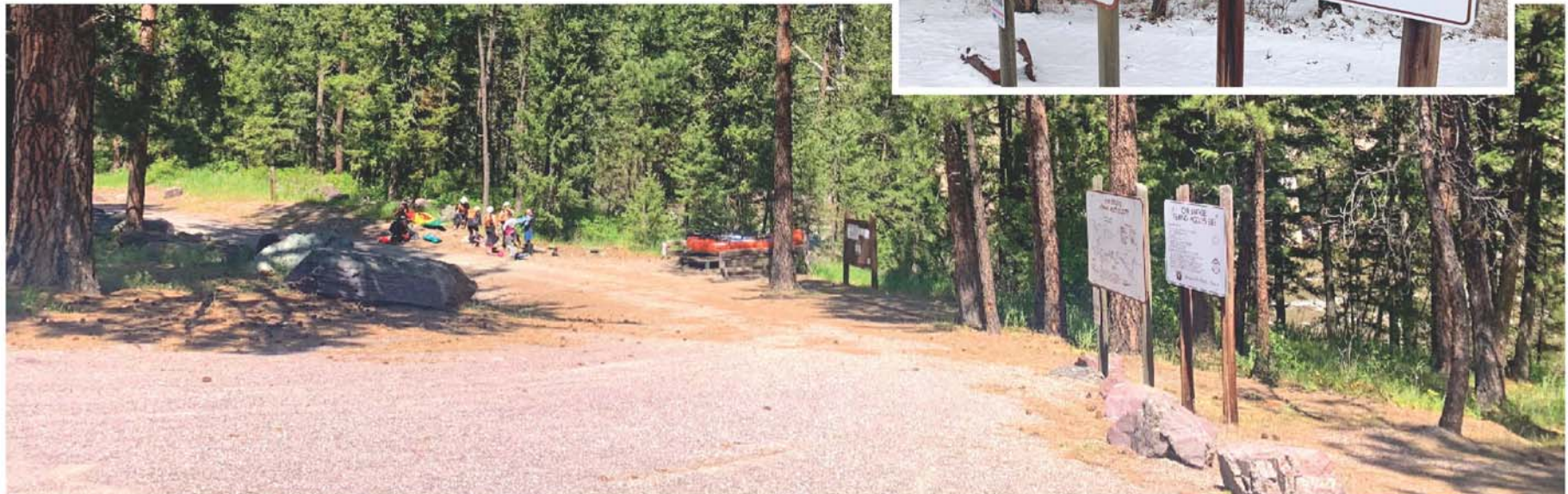


# Environmental Considerations

MDT projects require preparation of environmental studies to assess the environmental, social and economic effects of the proposed actions prior to making a decision.

The study evaluated:

- The historic nature of the bridge
- Wetlands
- Wildlife, fish, birds and their habitat
- Hazardous materials





# Schedule and Next Steps

MDT anticipates the following schedule:

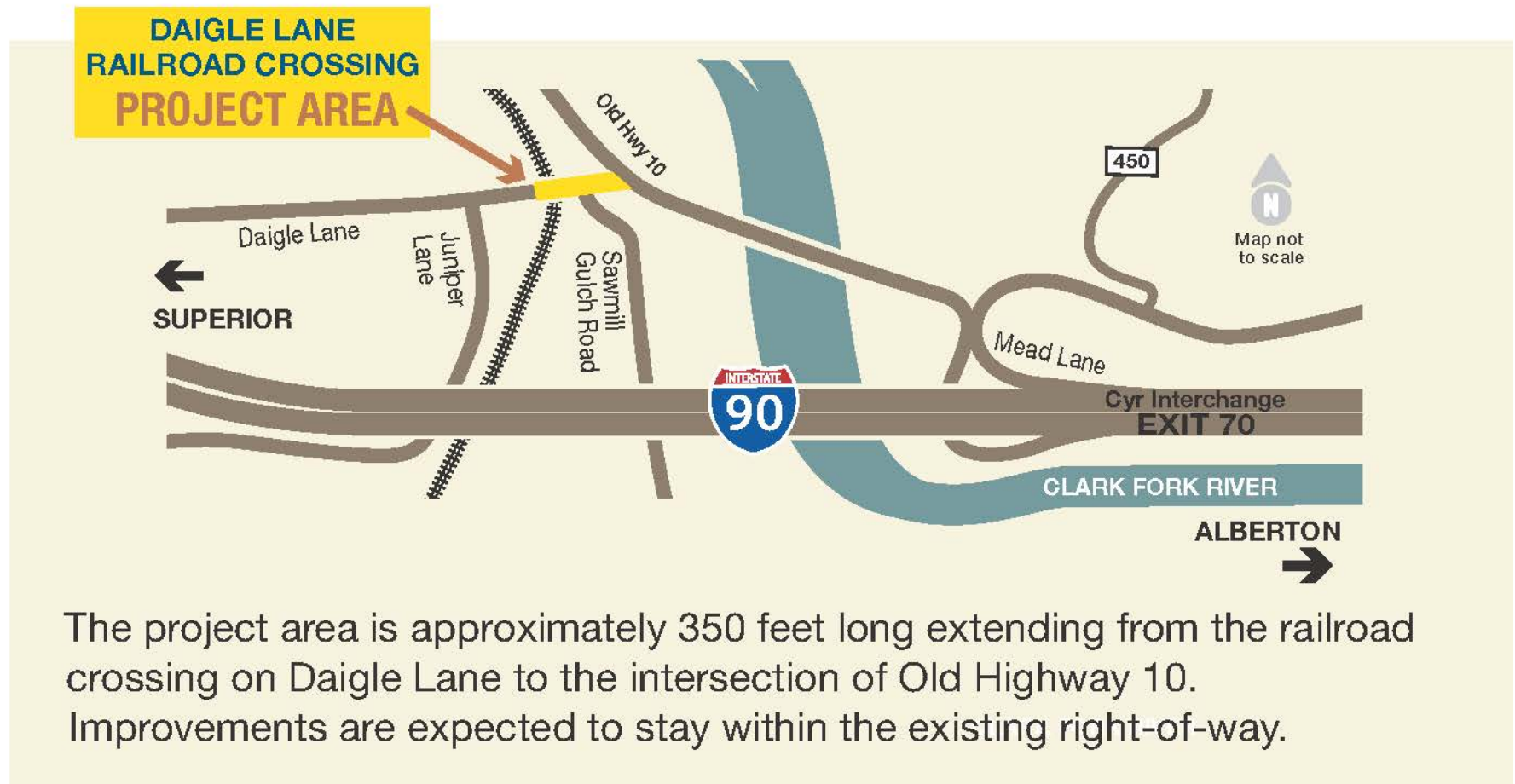
<b>Preliminary Design</b>	<b>2020 – 2021</b>
<b>Final design plans developed</b>	<b>2021 – 2022</b>
<b>Present final design information to public</b>	<b>2022</b>
<b>Construction anticipated</b>	<b>2023</b>





# Daigle Lane Project Area

The Montana Department of Transportation is improving the railroad crossing at Daigle Lane near the Interstate 90 Cyr Interchange west of Alberton in Mineral County.



The project area is approximately 350 feet long extending from the railroad crossing on Daigle Lane to the intersection of Old Highway 10. Improvements are expected to stay within the existing right-of-way.



# Purpose and Need

This project is necessary to improve motorist safety and usability of the Daigle Lane Railroad Crossing.

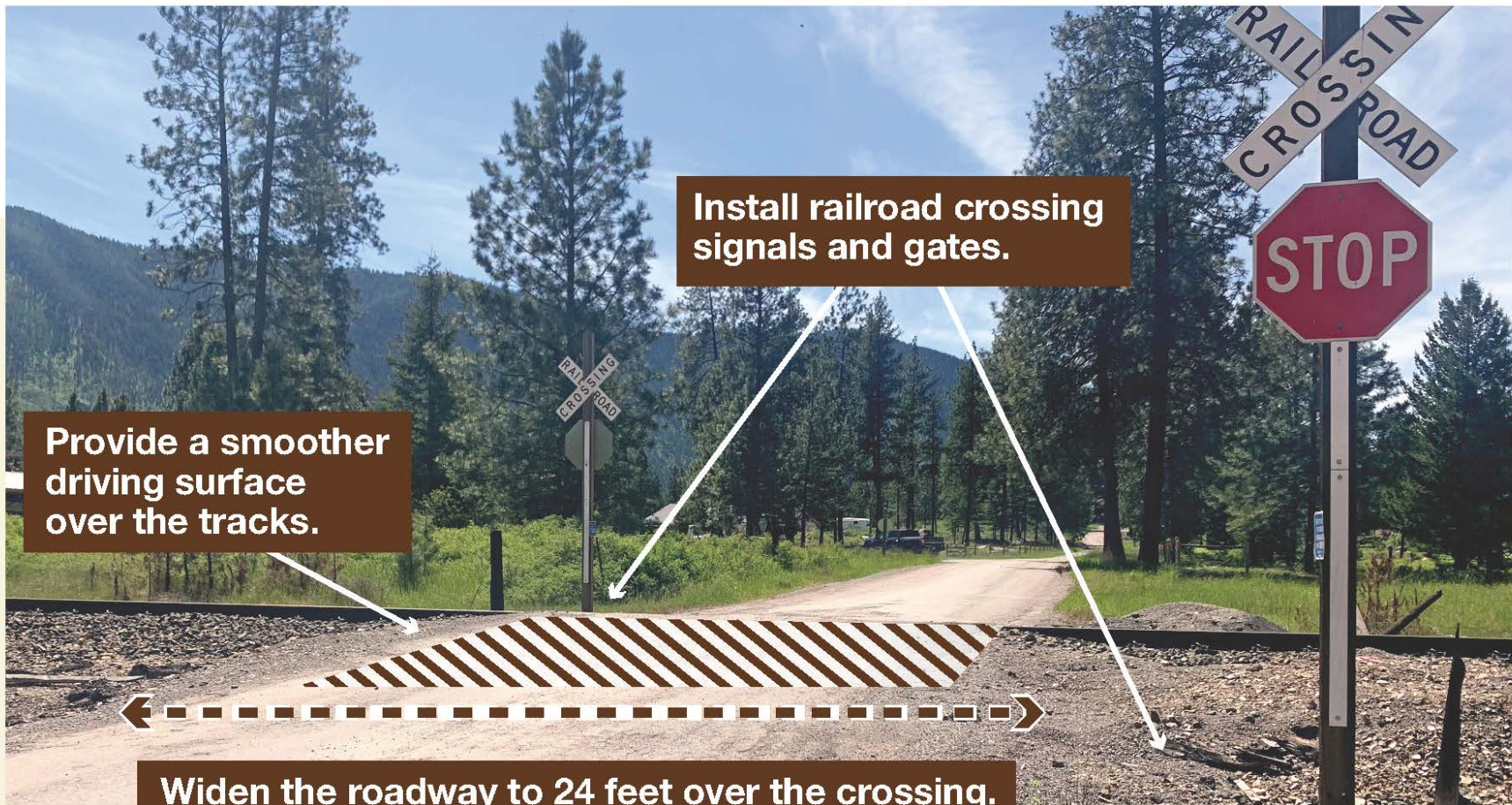
- The existing crossing is 20-feet wide and does not have railroad crossing signal lights or gates to indicate when a train is approaching.
- Due to the curve and raised elevation of the tracks, the crossing needs to be realigned to provide a smoother driving surface over the tracks.





# Proposed Improvements

Based on a safety analysis, MDT identified several upgrades that will improve the railroad crossing.



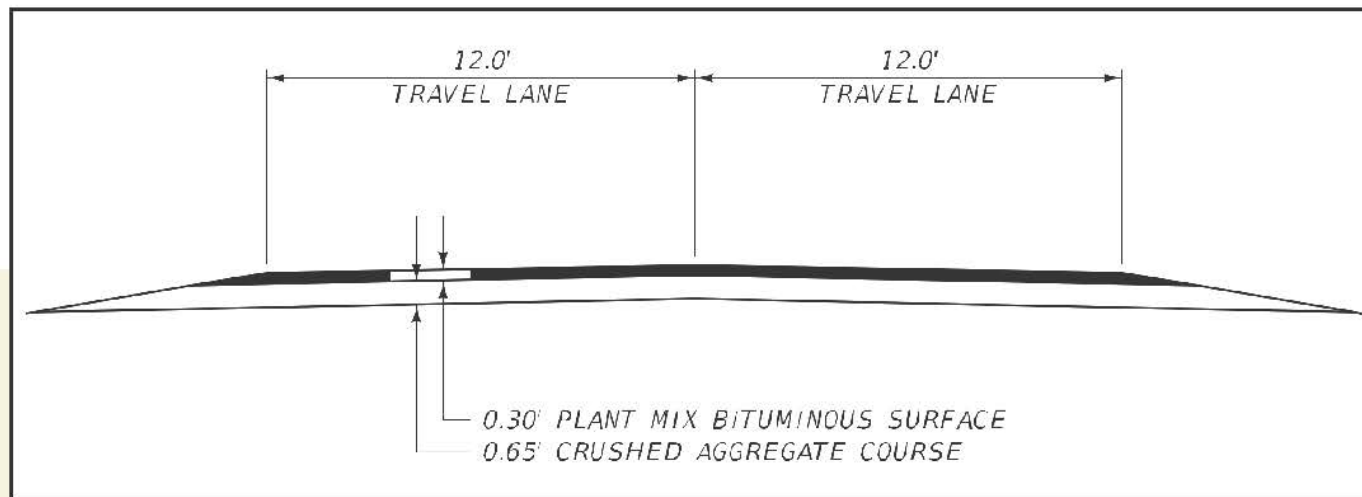
Provide a smoother driving surface over the tracks.

Install railroad crossing signals and gates.

Widen the roadway to 24 feet over the crossing.



# Proposed Improvements Typical Section





# Proposed Improvements Plans





# Construction Traffic Control

**MDT is developing plans to maintain local access throughout construction. A 6-8 hour closure of Daigle Lane is anticipated to replace the crossing surface. The detour will be coordinated with emergency responders and communicated to local residents and officials prior to the closure.**







# Daigle Schedule and Next Steps

MDT anticipates the following schedule:

<b>Preliminary Design</b>	<b>2019 – 2020</b>
<b>Present preliminary design information to public</b>	<b>Fall/Winter 2020</b>
<b>Final Design &amp; Permitting</b>	<b>2021 – 2022</b>
<b>Present final design information to public</b>	<b>Spring 2022</b>
<b>Anticipated Construction</b>	<b>Fall 2022/ Spring 2023</b>

# Online Survey & Presentation

MDT has posted a survey online to gather feedback on the projects and to learn more about how we can communicate better with you.

## How to participate

- Visit the project websites:



Daigle Lane Railroad Crossing Project  
[www.mdt.mt.gov/pubinvolve/daigle/](http://www.mdt.mt.gov/pubinvolve/daigle/)



Cyr Bridge Rehabilitation Project  
[www.mdt.mt.gov/pubinvolve/cyrbridge/](http://www.mdt.mt.gov/pubinvolve/cyrbridge/)

- View a recording of the online open house presentation
- Take the survey (link available until December 23, 2020)

# Thank You

Thank you for joining in today's online open house. Communicating with the public during the development and construction of the projects is important to the success of the project. MDT will continue to update the public throughout the project.

## Stay Informed

Visit the project websites at:



**CYR BRIDGE**  
REHABILITATION PROJECT

[www.mdt.mt.gov/  
pubinvolve/cyrbridge/](http://www.mdt.mt.gov/pubinvolve/cyrbridge/)



**DAIGLE LANE**  
RAILROAD CROSSING PROJECT

[www.mdt.mt.gov/  
pubinvolve/daigle/](http://www.mdt.mt.gov/pubinvolve/daigle/)



**VISION ZERO**  
zero deaths · zero serious injuries  
MONTANA DEPARTMENT  
OF TRANSPORTATION

## Contact

**Brandon Coates**, Public Involvement Manager  
**EMAIL** Brandon@RBCI.net **PHONE** (406) 465-3350