



2023 Montana Crash Data

2024 Annual Transportation Safety Meeting

Pam Langve-Davis, CHSP Manager, MDT

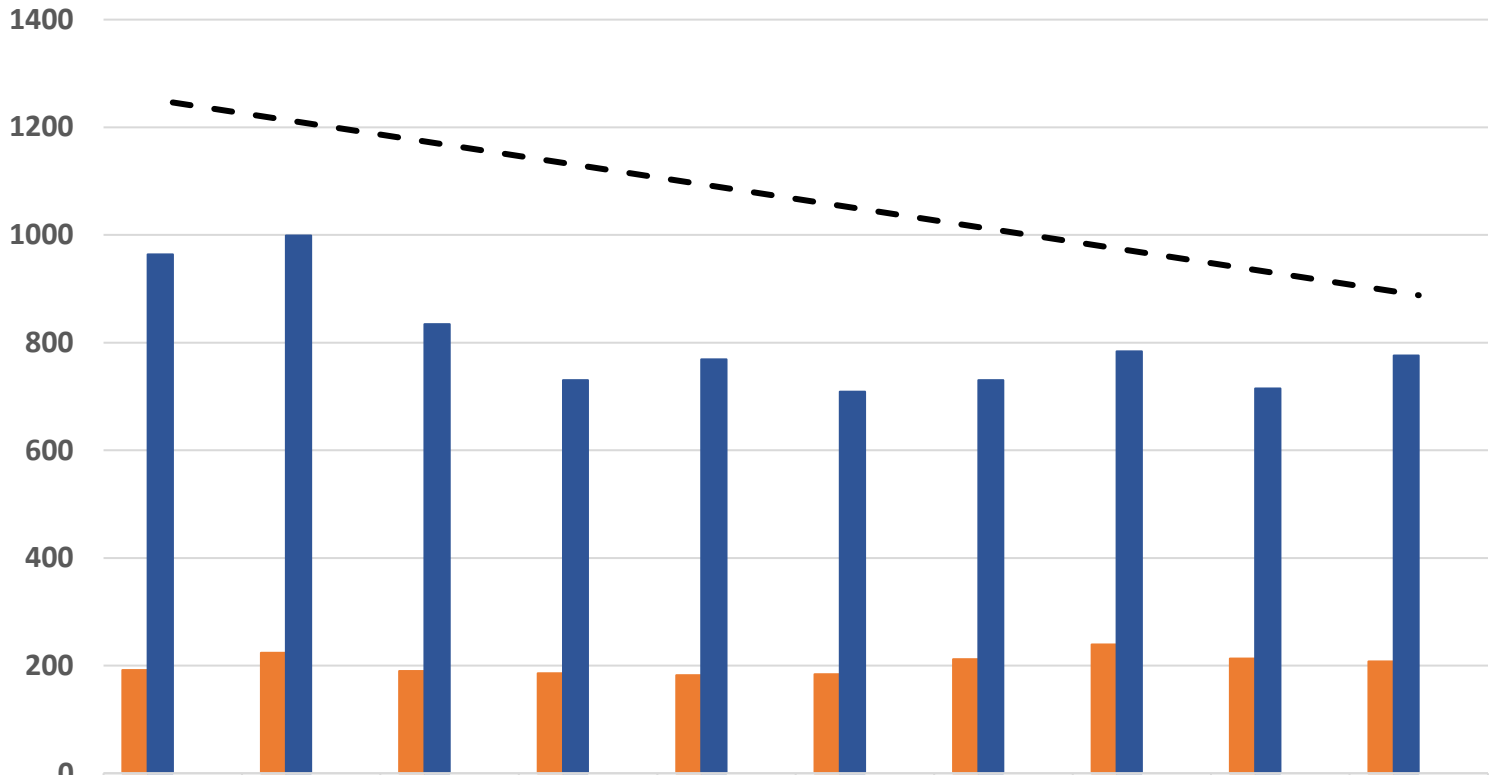
October 17, 2024

Delta Hotel Helena, MT



2023 Preliminary Data. Pulled 10-04-2024. FARS 2023 has yet to be released.

Total Fatalities & Serious Injuries, 2014-2023



	2014	2015	2016	2017	2018	2019	2020	2021	2022	2023
■ Fatalities	192	224	190	186	182	184	212	239	213	208
■ Serious Injuries	964	999	834	730	769	709	730	784	715	776
Total Fatalities & Serious Injuries	1156	1223	1024	916	951	893	942	1023	928	984
5-Year Average	1236	1244	1213	1130	1054	1001	945	945	947	954

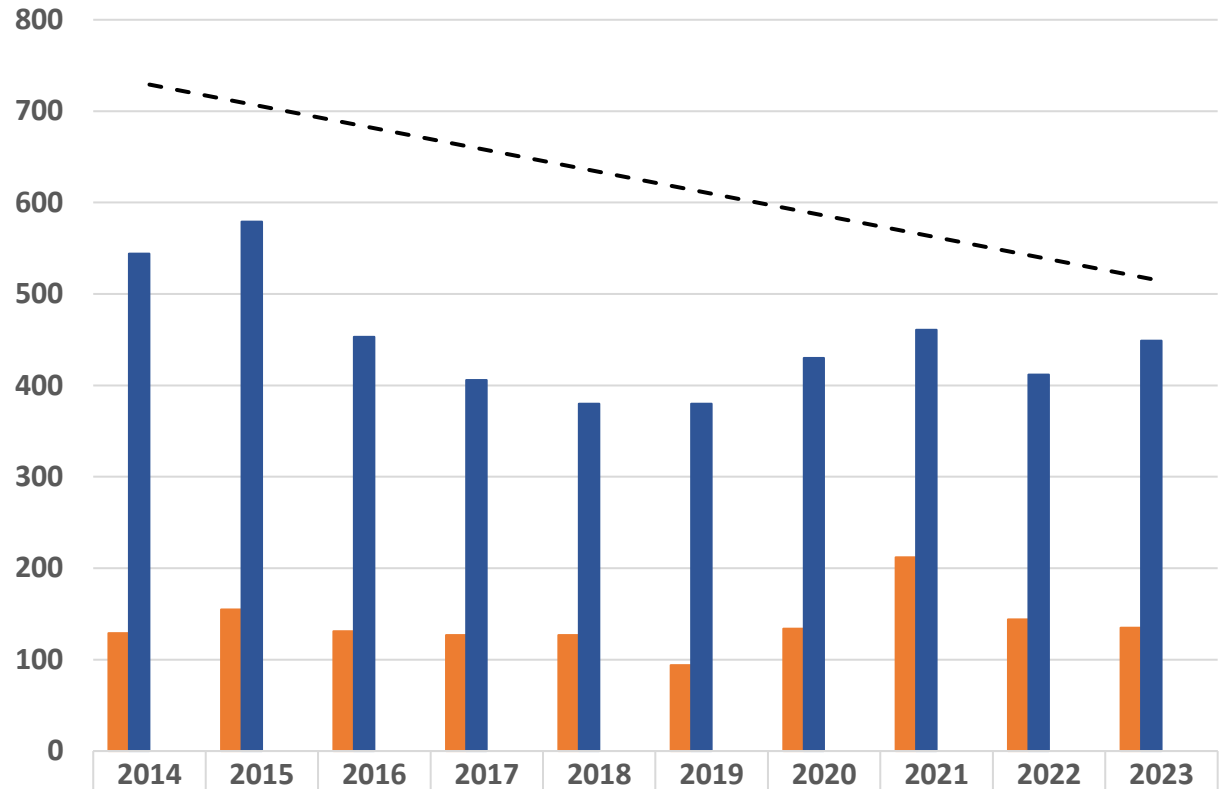
2023 Preliminary Data. Pulled 10-04-2024. FARS 2023 has yet to be released.

Roadway Departure Fatalities & Serious Injuries

A roadway departure is defined as any instance in which a vehicle leaves the travel lane. It includes a non-junction Head On collision (HO), Side-Swipe Opposite Direction (SSOD), Fixed Object (FO) or Roll Over (RO).



Roadway Departure Fatalities & Serious Injuries, 2014-2023



	2014	2015	2016	2017	2018	2019	2020	2021	2022	2023
■ Fatalities	129	155	131	127	127	94	134	212	144	135
■ Serious Injuries	544	579	453	406	380	380	430	461	412	449
Roadway Fatalities & Serious Injuries	673	734	584	533	507	474	564	673	556	584
5-Year Average	730	736	715	655	606	566	532	550	555	570

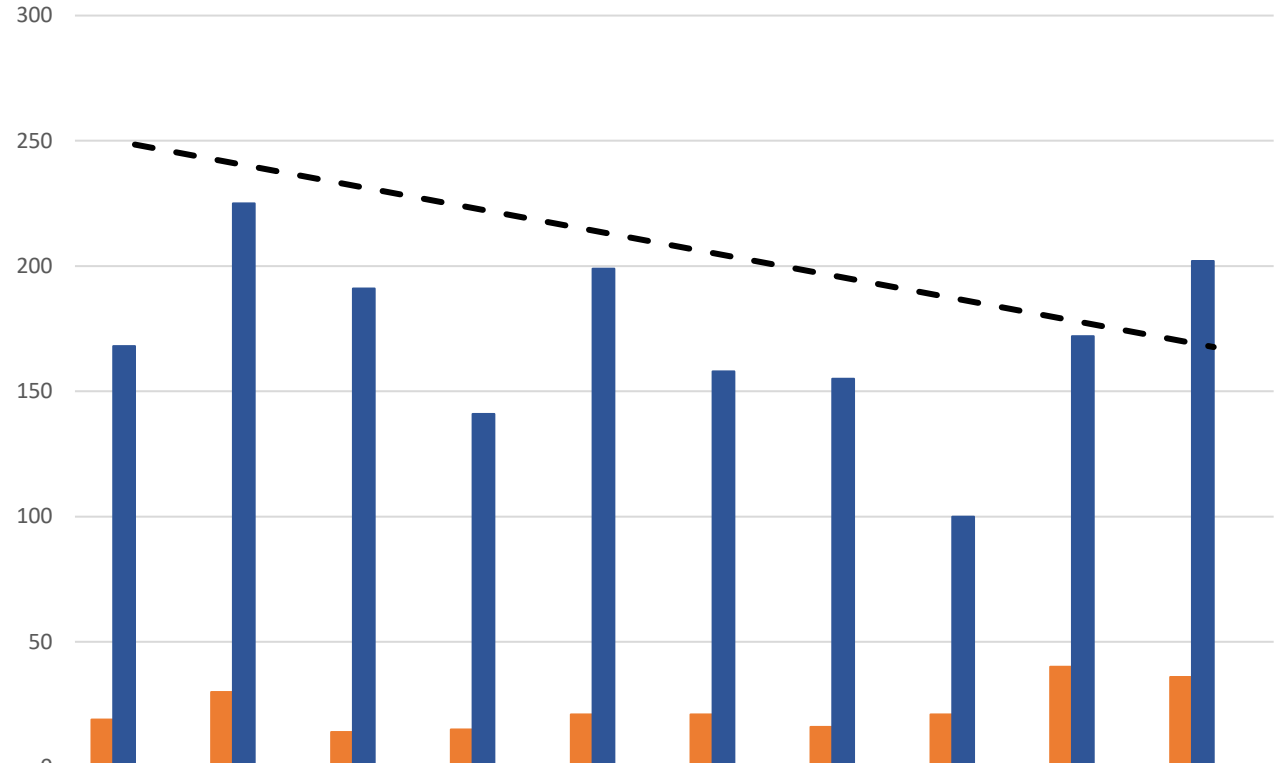
2023 Preliminary Data. Pulled 10-04-2024. FARS 2023 has yet to be released.

Intersection-related Fatalities & Serious Injuries

An Intersection related crash is defined as a crash occurring in or related to or near an intersection.



Intersection-related Fatalities & Serious Injuries, 2015-2023



	2014	2015	2016	2017	2018	2019	2020	2021	2022	2023
■ Fatalities	19	30	14	15	21	21	16	21	40	36
■ Serious Injuries	168	225	191	141	199	158	155	100	172	202
All Fatalities & Serious Injuries	187	255	205	156	220	179	171	121	212	238
5-Year Average	244	250	243	216	205	203	186	169	181	184

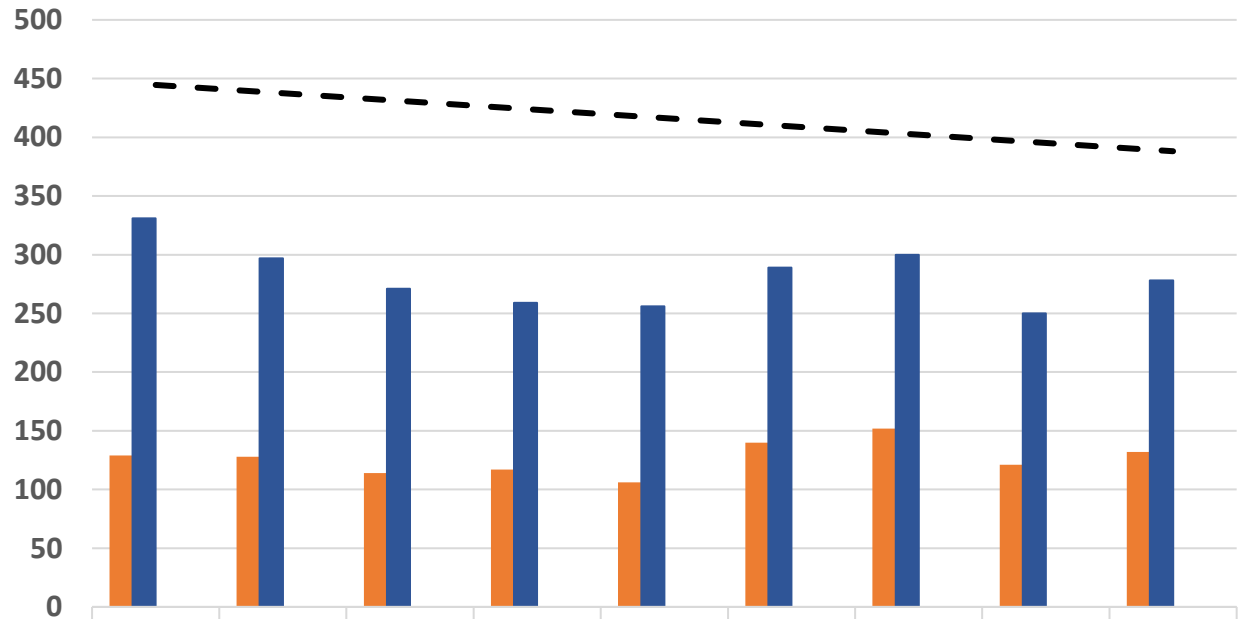
2023 Preliminary Data. Pulled 10-04-2024. FARS 2023 has yet to be released.

Impaired Driving Fatalities & Serious Injuries

An impaired driving crash is indicated on the crash form that one of the drivers was impaired by alcohol & / or drugs.



Impaired Driver Involved (Alcohol &/or Drug) Fatalities & Serious Injuries, 2014-2023



	2015	2016	2017	2018	2019	2020	2021	2022	2023
■ Impaired Driver involved Fatalities	129	128	114	117	106	140	152	121	132
■ Impaired Driver Involved Serious Injuries	331	297	271	259	256	289	300	250	278
Fatalities & Serious Injuries	460	425	385	376	362	429	452	371	410
5-Year Average Impaired Driver Involved	449	454	431	412	402	395	401	398	405

2023 Preliminary Data. Pulled 10-04-2024. FARS 2023 has yet to be released.

Unrestrained Vehicle Occupant Fatalities & Serious Injuries

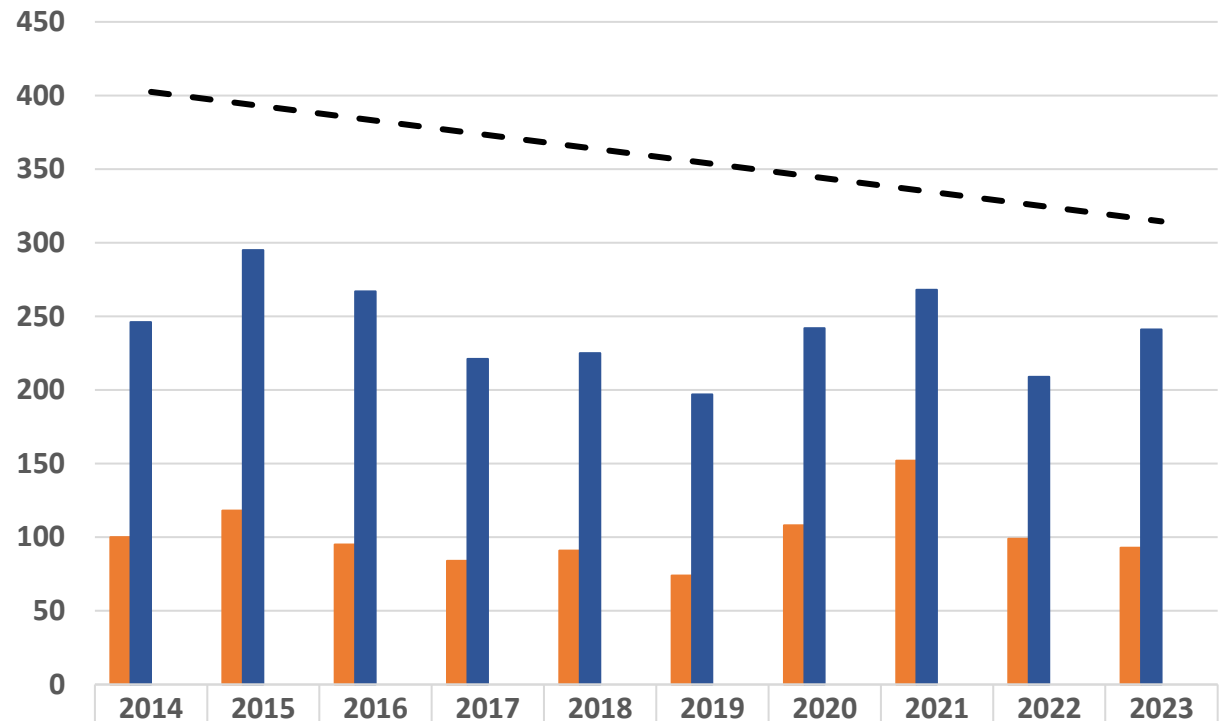
Unrestrained is defined as no or improperly restrain usage.

An Unrestrained Vehicle Occupant (UVO) includes all vehicle occupants regardless of age and seat location and includes seatbelts, booster seats, and child passenger seats.



Unrestrained Vehicle Occupant Fatalities & Serious Injuries, 2014-2023

Includes None Used or Improper Use of safety restraints.



	2014	2015	2016	2017	2018	2019	2020	2021	2022	2023
UVO Fatalities	100	118	95	84	91	74	108	152	99	93
UVO Serious Injuries	246	295	267	221	225	197	242	268	209	241
All UVO Fatalities & Serious Injuries	346	413	362	305	316	271	350	420	308	334
5-Year Average	402	406	403	369	348	333	321	332	333	337

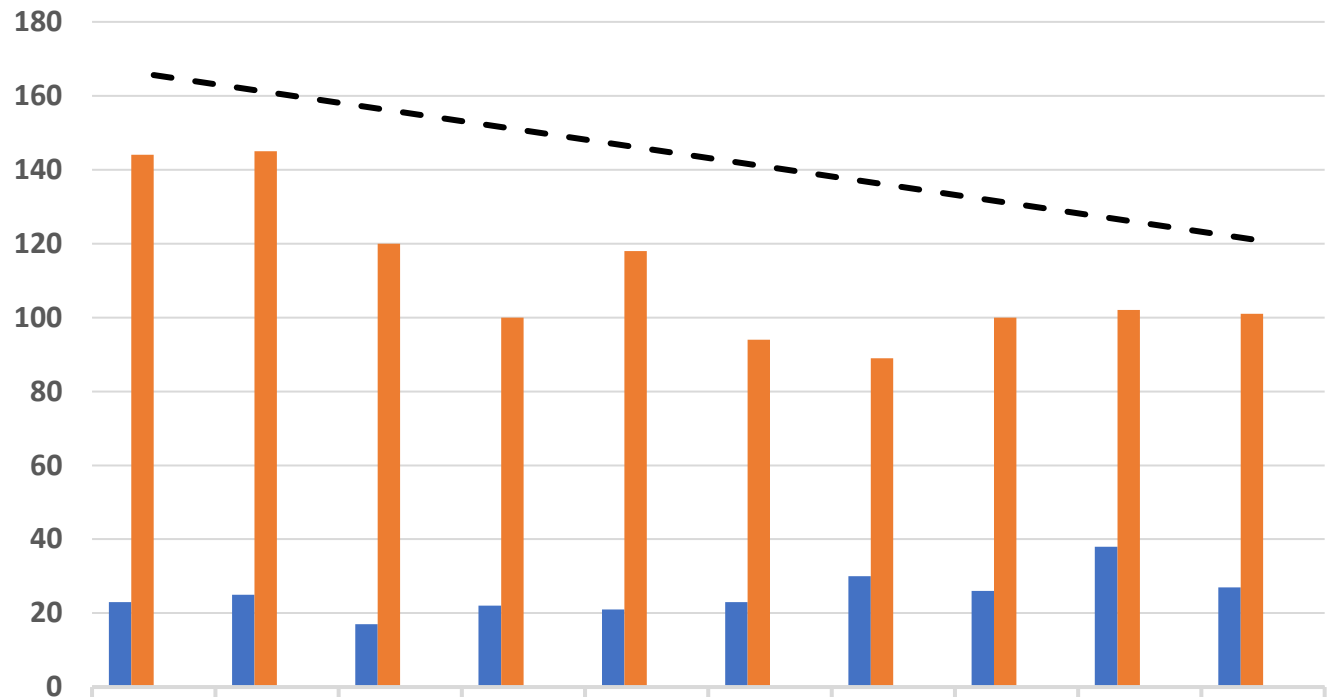
2023 Preliminary Data. Pulled 10-04-2024. FARS 2023 has yet to be released.

Motorcyclist Fatalities & Serious Injuries

Motorcyclist is defined and includes the motorcycle operator and passenger.



Motorcyclist Fatalities & Serious Injuries, 2014-2023



	2014	2015	2016	2017	2018	2019	2020	2021	2022	2023
Motorcyclist Fatalities	23	25	17	22	21	23	30	26	38	27
Motorcyclist Serious Injuries	144	145	120	100	118	94	89	100	102	101
Motorcyclist F & SI	167	170	137	122	139	117	119	126	140	128
5-Year Average	157	163	165	158	147	137	127	125	128	126

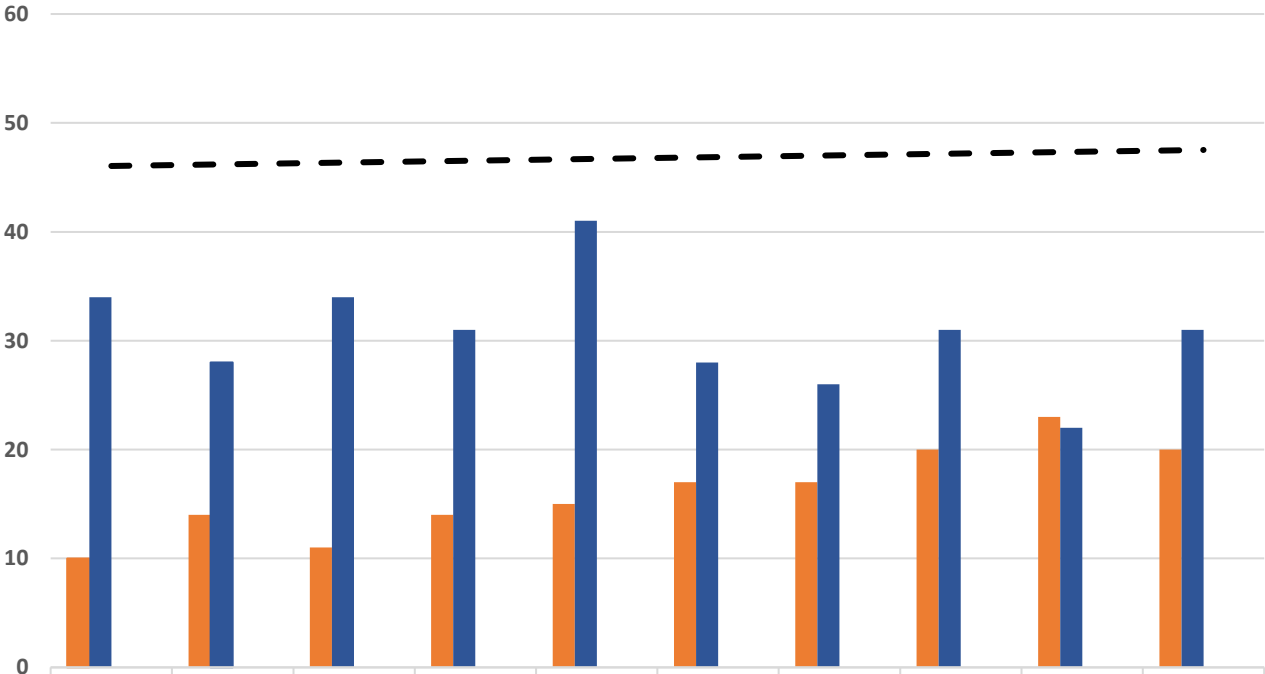
2023 Preliminary Data. Pulled 10-04-2024. FARS 2023 has yet to be released.

Pedestrian Fatalities & Serious Injuries

Includes mobility device like a knee scooter and a wheelchair



Pedestrian Fatalities & Serious Injuries, 2014-2023



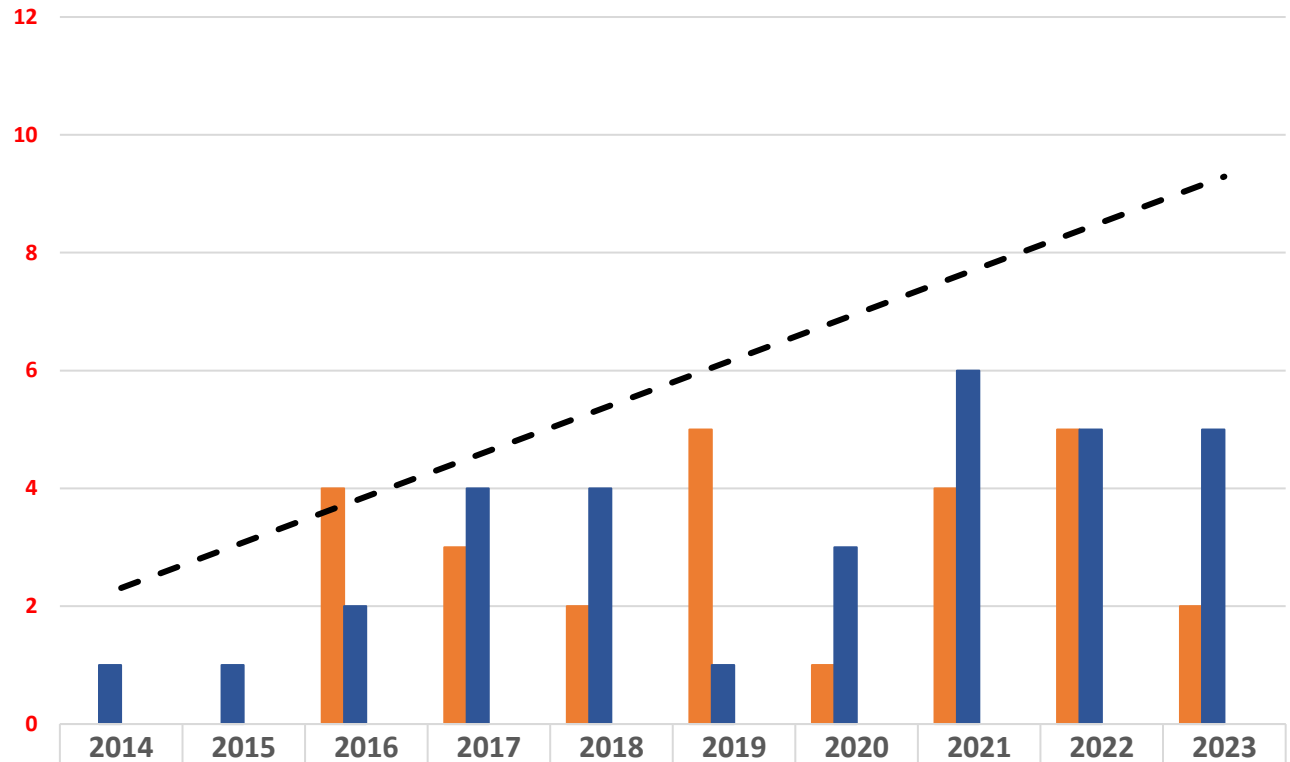
	2014	2015	2016	2017	2018	2019	2020	2021	2022	2023
■ Pedestrian Fatalities	10	14	11	14	15	17	17	20	23	20
■ Pedestrian Serious Injuries	34	28	34	31	41	28	26	31	22	31
Total Ped Fatalities & Serious Injuries	44	42	45	45	56	45	43	51	45	51
5-Year Average	47	47	45	47	46	47	47	48	48	47

2023 Preliminary Data. Pulled 10-04-2024. FARS 2023 has yet to be released.

Older Pedestrian (65+ YOA) Fatalities & Serious Injuries



Older Pedestrians (65+ YOA) Fatalities & Serious Injuries, 2014-2023



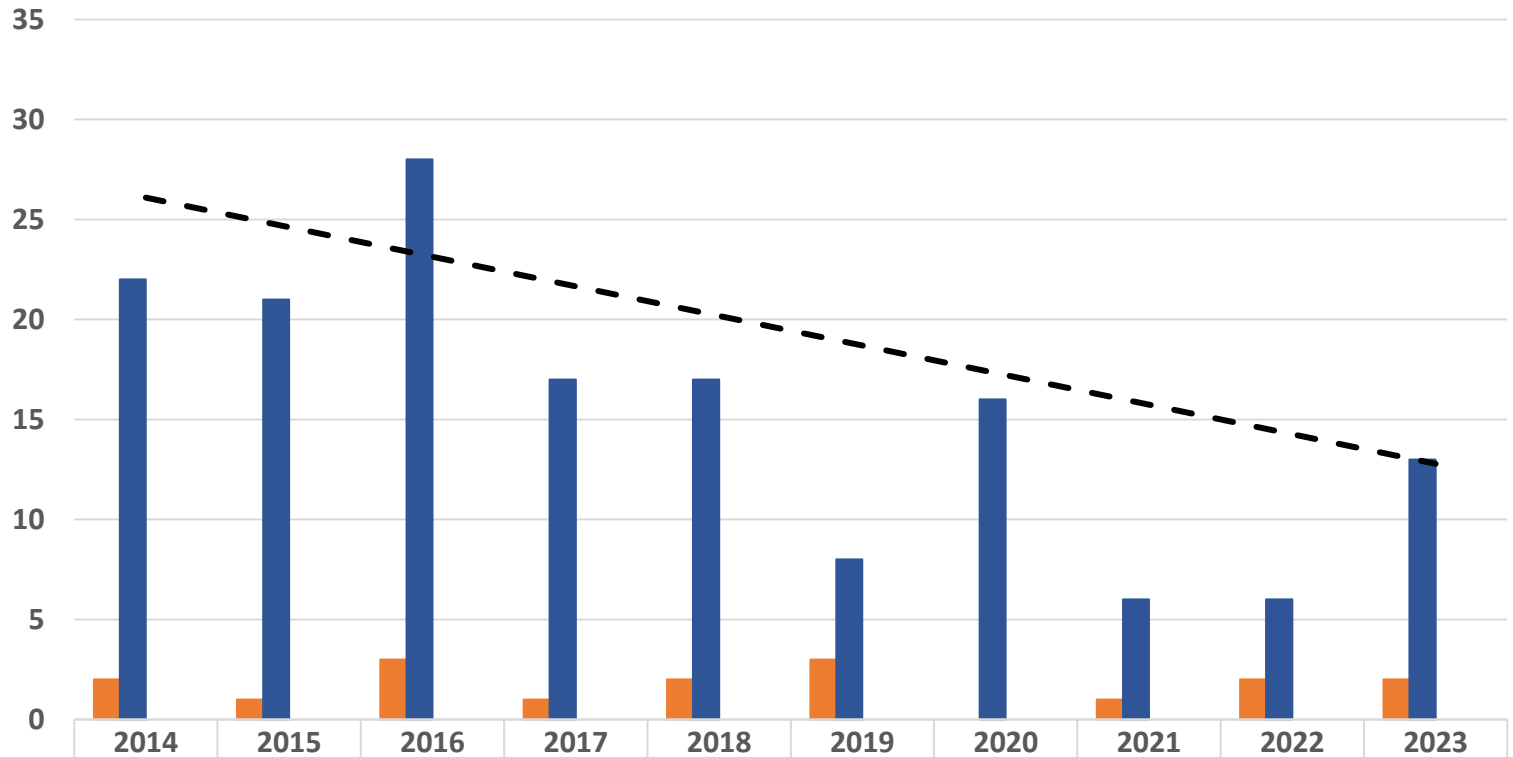
	2014	2015	2016	2017	2018	2019	2020	2021	2022	2023
■ Fatalities (65+)	0	0	4	3	2	5	1	4	5	2
■ Serious Injuries (65+)	1	1	2	4	4	1	3	6	5	5
Total Fatalities & Serious Injuries	1	1	6	7	6	6	4	10	10	7
5-Year Average	5	4	4	5	4	5	6	7	7	7

2023 Preliminary Data. Pulled 10-04-2024. FARS 2023 has yet to be released.

Bicyclist Fatalities & Serious Injuries



Bicyclist Fatalities & Serious Injuries, 2014-2023



	2014	2015	2016	2017	2018	2019	2020	2021	2022	2023
Bicyclist Fatalities	2	1	3	1	2	3	0	1	2	2
Bicyclist Serious Injuries	22	21	28	17	17	8	16	6	6	13
Bicyclist F & SI	24	22	31	18	19	11	16	7	8	15
5-Year Average	22	23	25	25	23	20	19	14	12	11

2023 Preliminary Data. Pulled 10-04-2024. FARS 2023 has yet to be released.

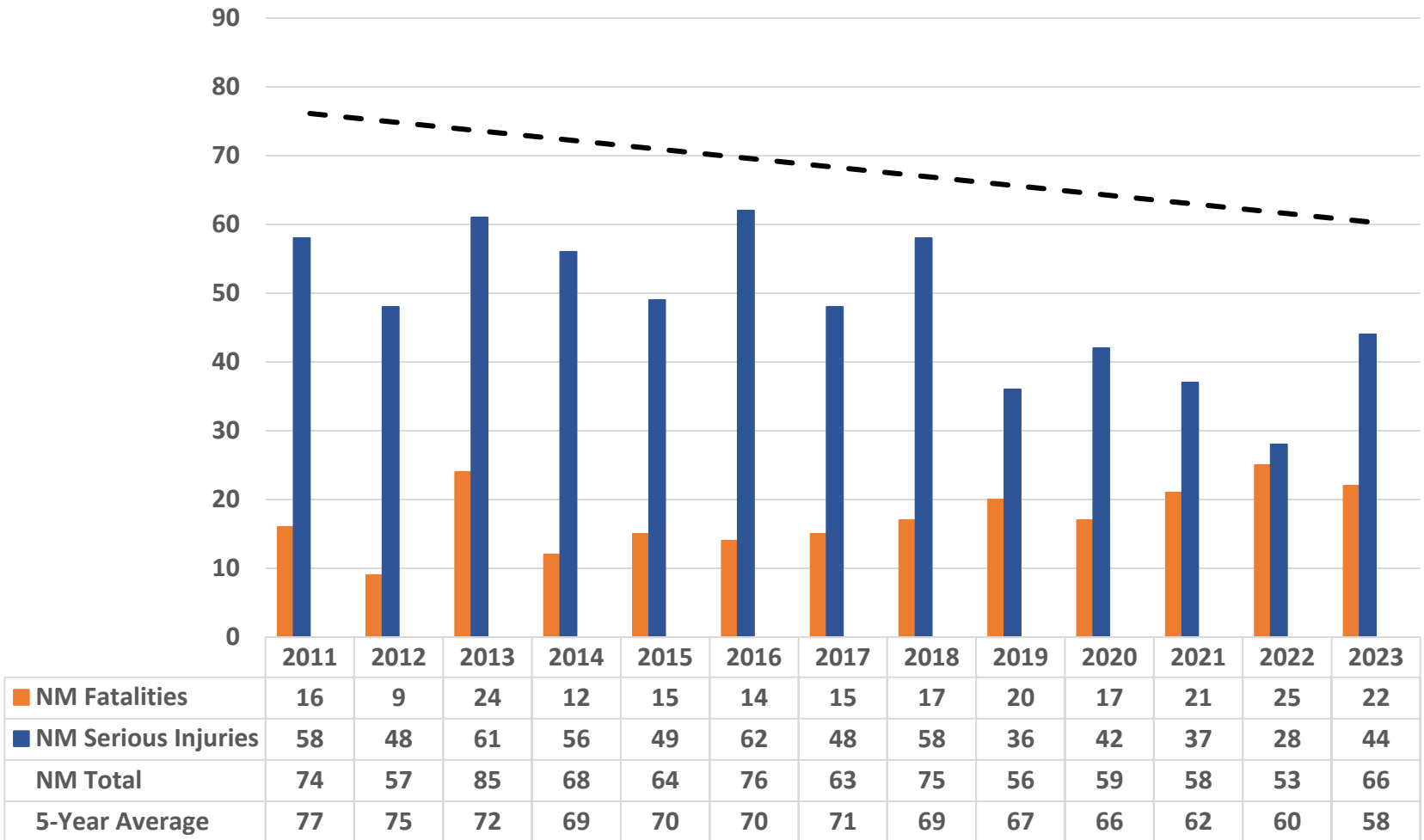
Non-Motorized Fatalities & Serious Injuries



A relatively new acronym you may be seeing is VRU, which stands for Vulnerable Road Users. VRU may be walking, cycling, rolling, or stationary. VRU and non motorized is used interchangeably.

* Cyclist on e-bikes and persons on motor scooters, mopeds, or motorcycles are not considered VRUs.

Non-Motorized/ Vulnerable Road User (VRU) Fatalities & Serious Injuries, 2014-2023

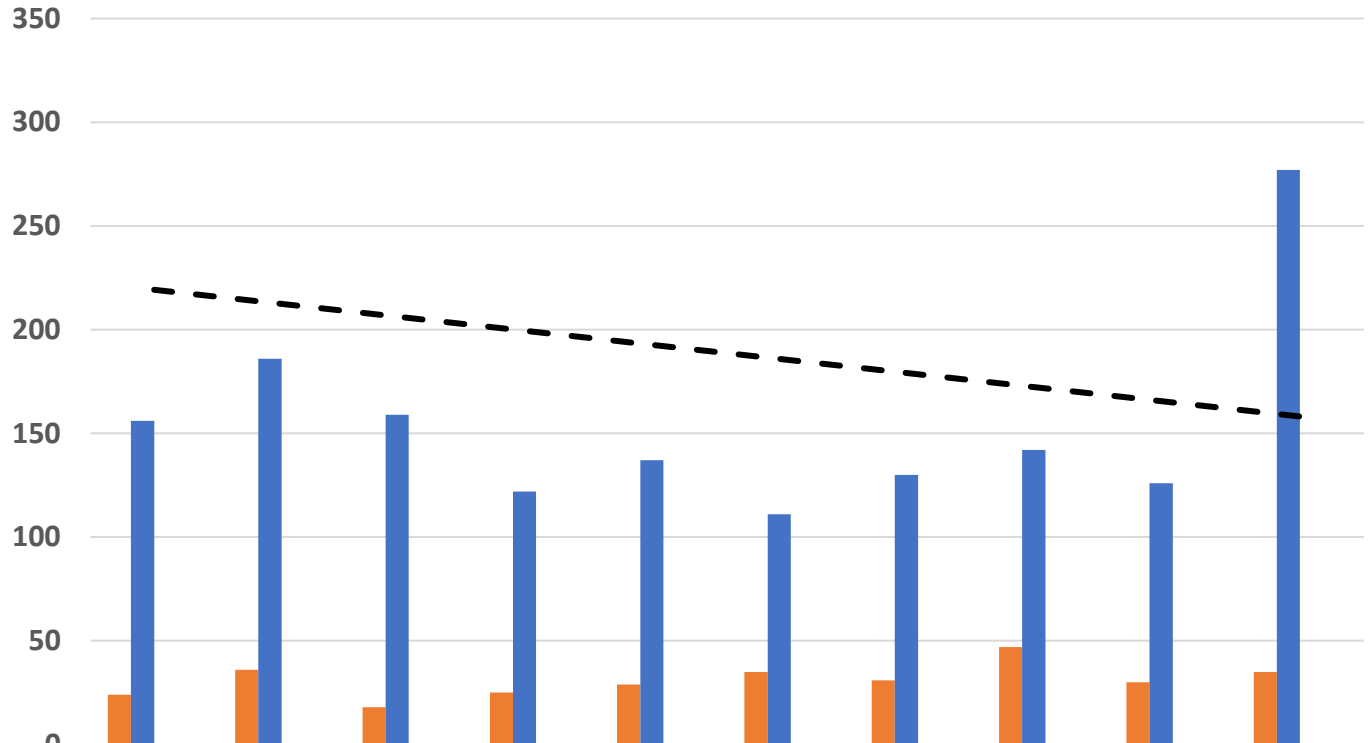


2023 Preliminary Data. Pulled 10-04-2024. FARS 2023 has yet to be released.

**Young Driver
Involved
(14-20 YOA)
Fatalities &
Serious
Injuries**



Young Driver (14-20 YOA) Involved Fatalities & Serious Injuries, 2014-2023



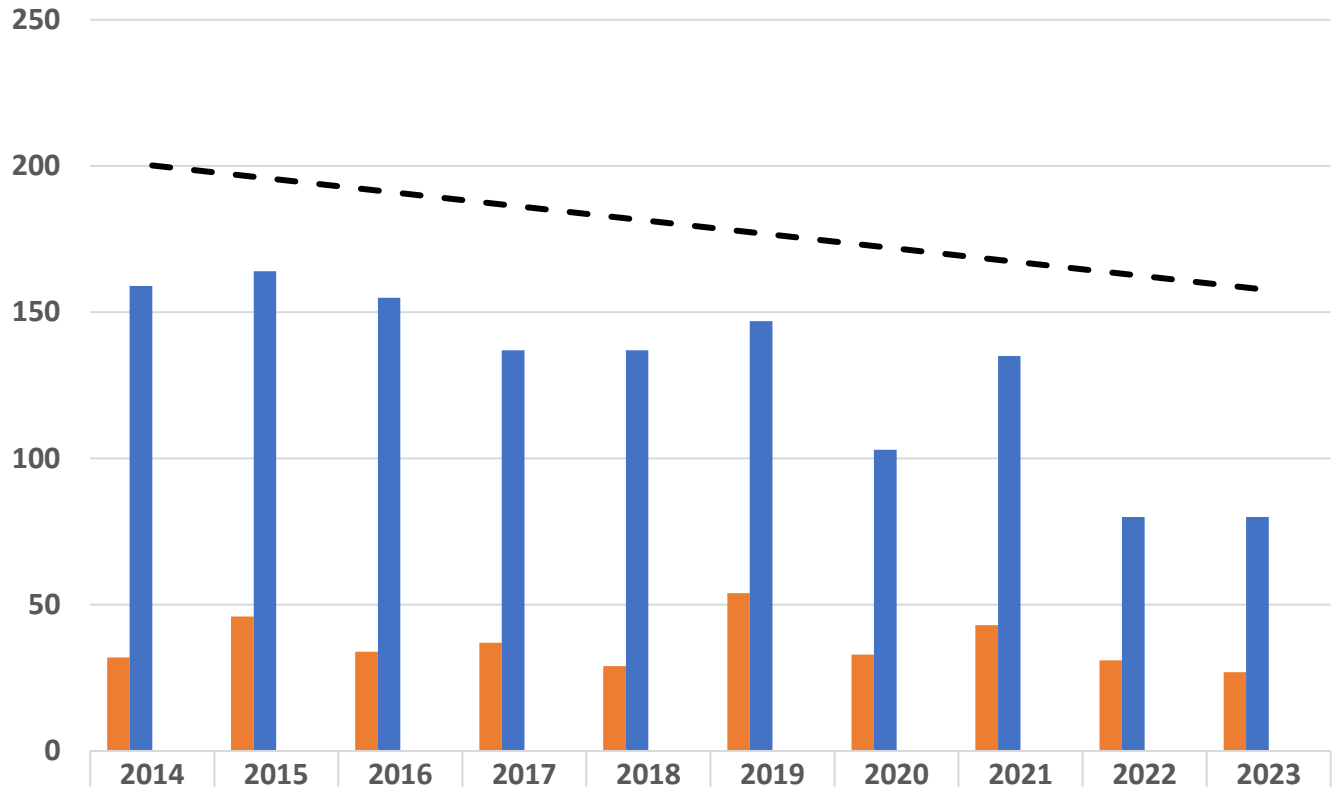
	2014	2015	2016	2017	2018	2019	2020	2021	2022	2023
■ Fatalities	24	36	18	25	29	35	31	47	30	35
■ Serious Injuries	156	186	159	122	137	111	130	142	126	277
All Fatalities & Serious Injuries	180	222	177	147	166	146	161	189	156	312
5-Year Average	230	224	214	191	178	172	159	162	164	193

2023 Preliminary Data. Pulled 10-04-2024. FARS 2023 has yet to be released.

Older Driver (65+ YOA) Fatalities & Serious Injuries



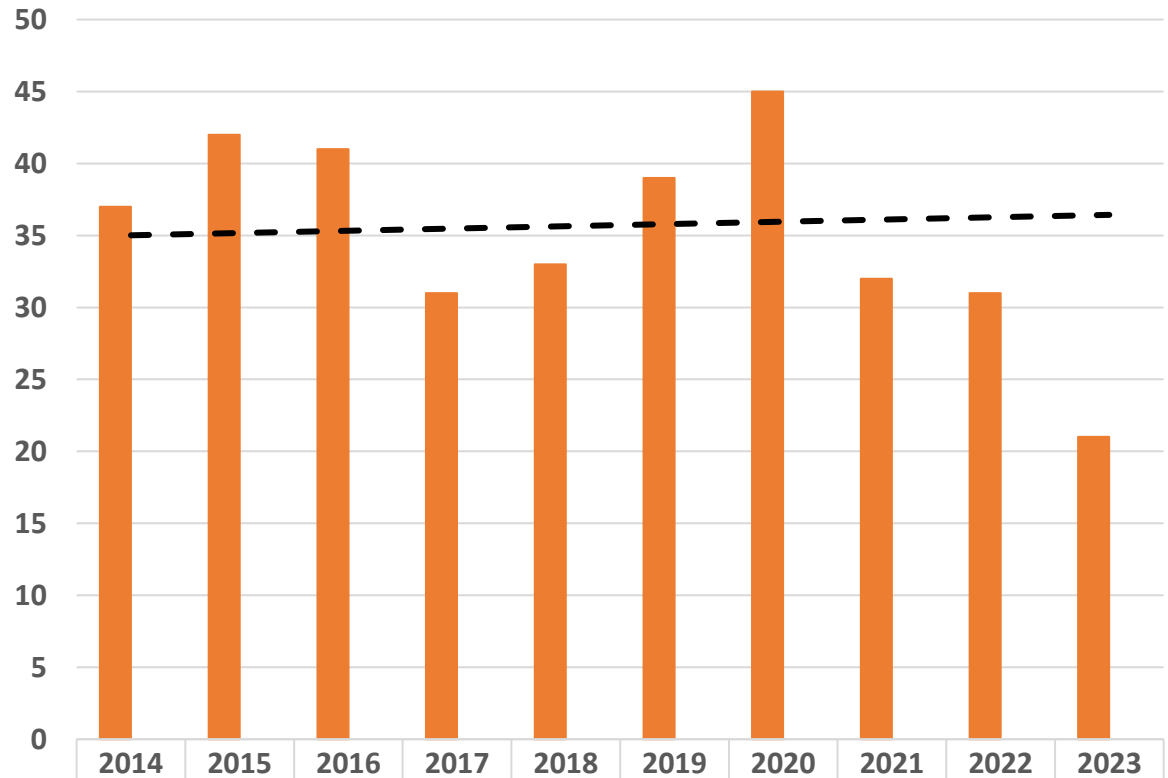
Older Driver(65+ YOA) Fatalities & Serious Injuries, 2014-2023



■ Fatalities	32	46	34	37	29	54	33	43	31	27
■ Serious Injuries	159	164	155	137	137	147	103	135	80	80
Total Fatalities & Serious Injuries	191	210	189	174	166	201	136	178	111	107
5-Year Average	190	190	193	193	186	188	173	171	158	147

2023 Preliminary Data. Pulled 10-04-2024. FARS 2023 has yet to be released.

Native American Fatalities, 2014-2023



■ Native American Fatalities (FARS 2014-2022)	2014	2015	2016	2017	2018	2019	2020	2021	2022	2023
	37	42	41	31	33	39	45	32	31	21
5-Year Average	32	34	38	36	37	37	38	36	36	34

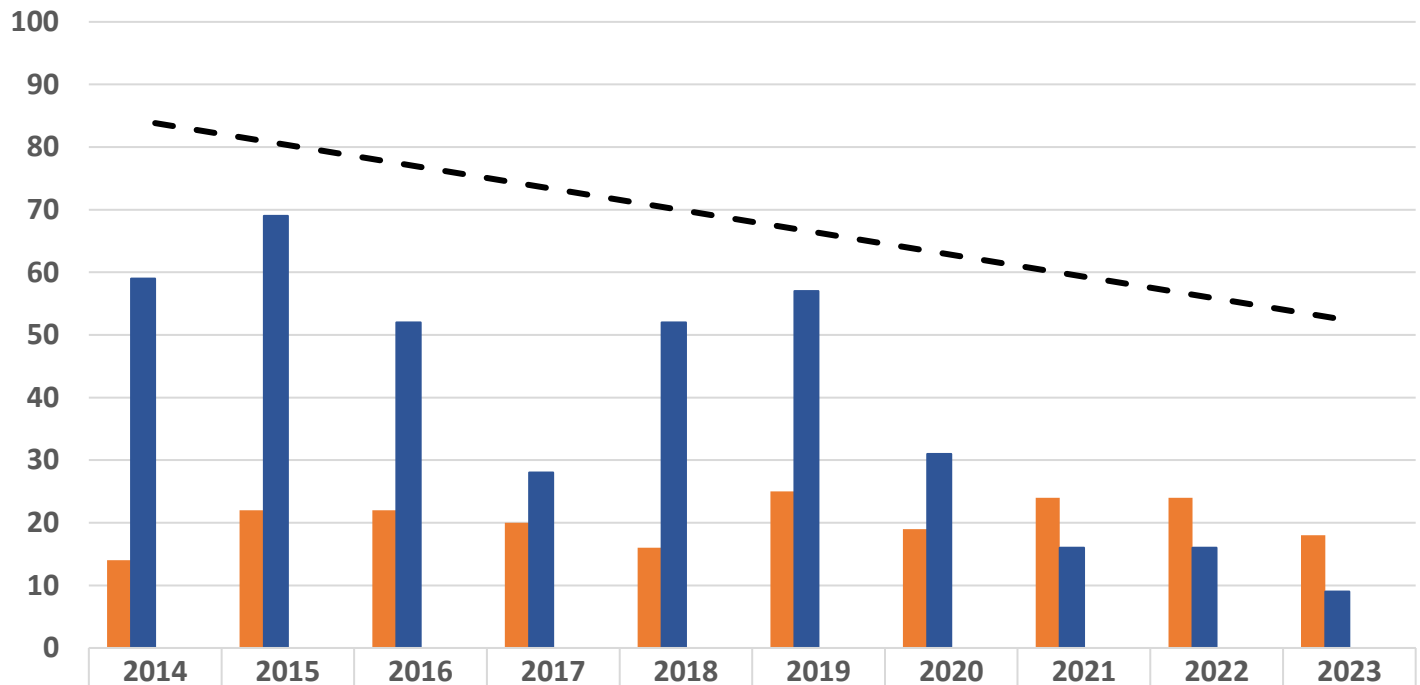
2023 Preliminary Data. Pulled 10-04-2024. FARS 2023 has yet to be released.

Large Vehicle Fatalities & Serious Injuries

Large vehicles, those
being over 9,999
pounds and often
requiring a
Commercial Drivers
License



Large Vehicle Involved Fatalities & Serious Injuries, 2014-2023

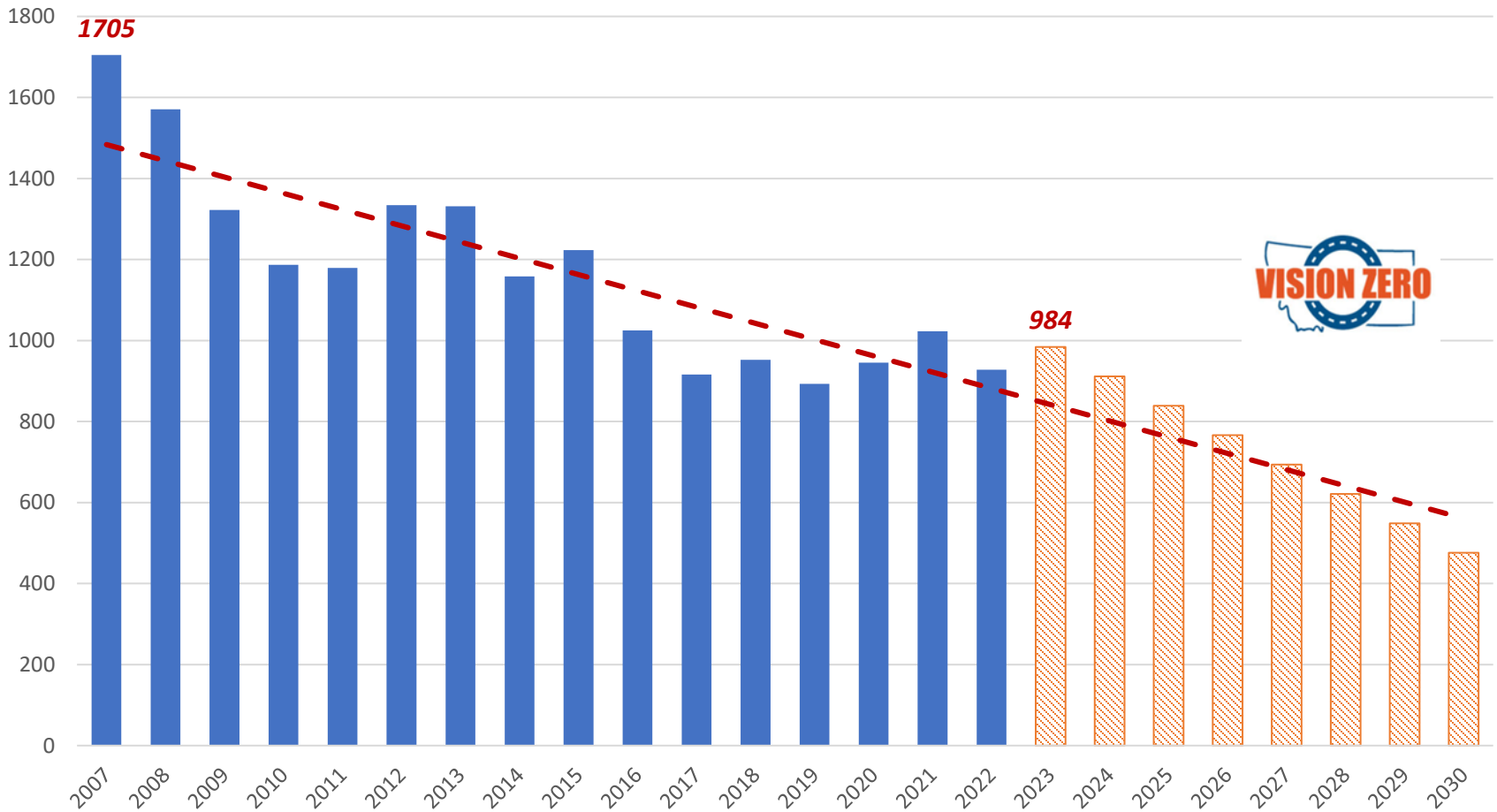


	2014	2015	2016	2017	2018	2019	2020	2021	2022	2023
Fatalities	14	22	22	20	16	25	19	24	24	18
Serious Injuries	59	69	52	28	52	57	31	16	16	9
Total LVB Fatalities & Serious Injuries	73	91	74	48	68	82	50	40	40	27
5-Year Average	77	83	77	74	71	73	64	58	56	48

2023 Preliminary Data. Pulled 10-04-2024. FARS 2023 has yet to be released.

CHSP Interim Goal

Reduce fatalities & serious injuries on Montana's roads by half, from 952 in 2018 to 476 in 2030.



2023 Preliminary Data. Pulled 10-04-2024. FARS 2023 has yet to be released.

Comprehensive Highway Safety Plan information

<http://www.mdt.mt.gov/visionzero/plans/chsp.shtml>

For questions or more information
please contact:

Pam Langve-Davis, CHSP Manager,
MDT 406-444-7646,
plangvedavis@mt.gov

