

..... MONTANA 2025

Emergency Response – Post-Crash Care Breakout Sessions

.....➔
Mike Colety, Kimley-Horn
2025 Annual Transportation Safety Meeting
Helena, Montana



August 13-14, 2025



Emergency Response – Post-Crash Care



**Data
Coordination**



**Training &
Equipment**



Emergency Response – Post-Crash Care

- Breakout Group Facilitator
 - Mike Colety, Kimley-Horn
- Breakout Group Subject Matter Experts

Day 1:

- Sheila Cozzie, MDT
- Terry Mullins, DPHHS

Day 2:

- Alyssa Johnson, DPHHS
- Shari Graham, DPHHS
- Sheila Cozzie, MDT



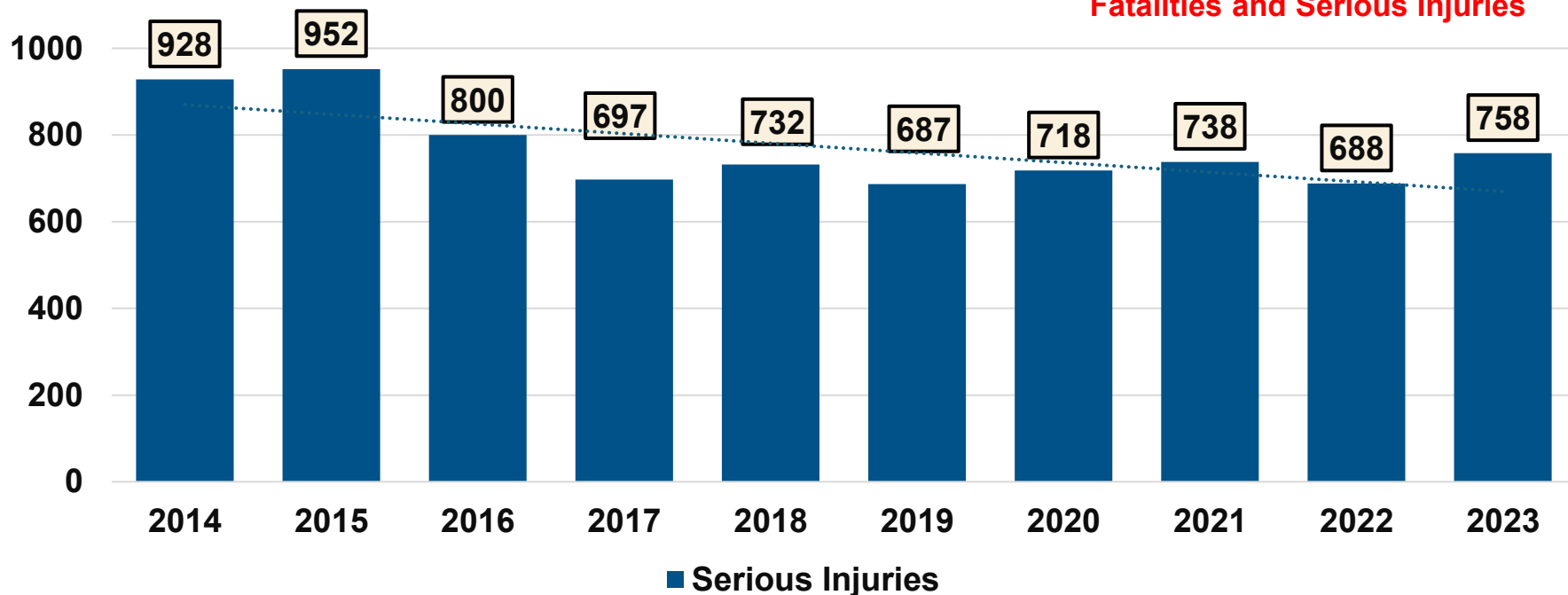
Strategy Break-Out Sessions

- Data driven problem identification
- Review of current best practices and proven strategies
- Discussion of potential strategies
- Group discussion on strategies for Montana



Emergency Response – Post-Crash Care Serious Injuries

Involved in 77% of all Fatalities and Serious Injuries



**Emergency Response – Post-Crash Care involves transporting people to a medical facility after a crash or crash-related incident, regardless of the transport method. This data reflects transport of serious injury victims only, as not all fatalities are transported by Emergency Medical Service providers.*



Emergency Response – Post-Crash Care Data Factsheet Key Takeaways



77%

of total fatal and serious injuries

Rural



71%

Urban



28%

Leading Factors of Emergency Response – Post-Crash Care Fatal and Serious Injuries:



32%

Unrestrained Vehicle Occupants



25%

Impaired Drivers



24%

Careless, Inattentive, and/or Distracted Driving



20%

Speed Related



Applying the Safe System Approach

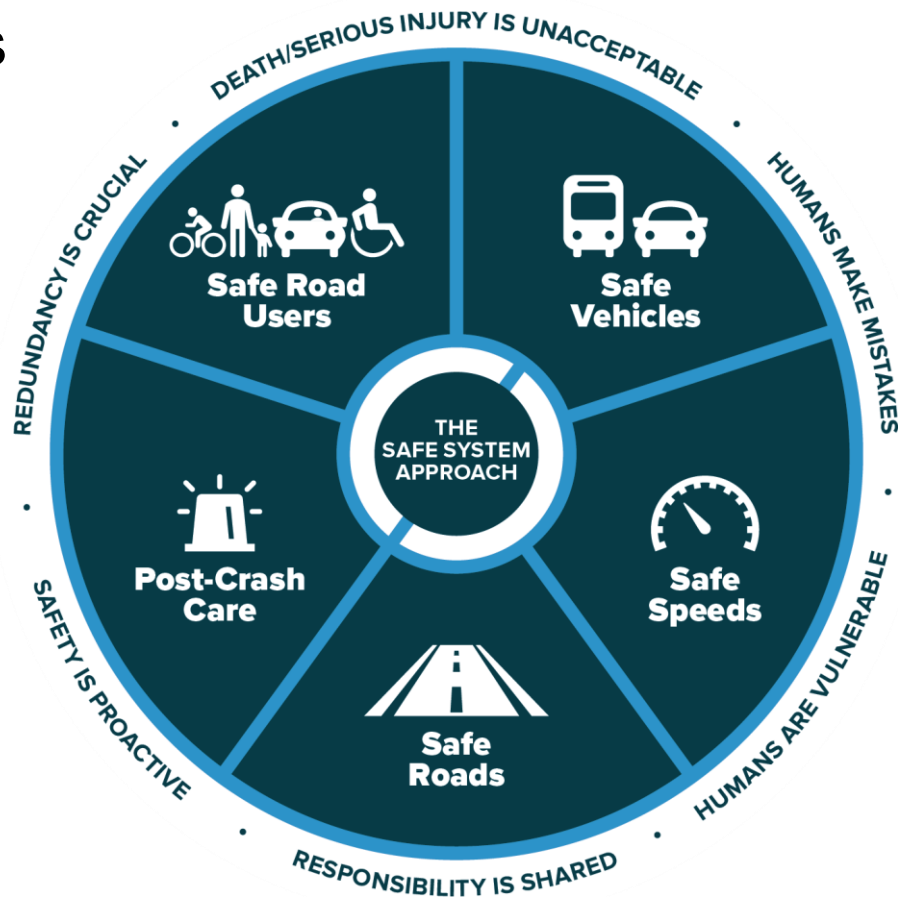
- How does SSA apply to this emphasis area?



Data Coordination



Training & Equipment





Emergency Response – Post-Crash Care - 2020 Strategies

- Access to the emergency response system; on scene care training and education
- Safe and rapid transport of crash victims and training of emergency responders
- Hospital-based trauma care
- Integrate crash, EMS, trauma, and roadway surveillance databases
- Provide statewide injury prevention education to communities through a collaborative effort
- Support laws, policy development and legislation



National Strategies for Emergency Response - Post Crash Care

1. Develop an outreach plan for EMS personnel for on-site scene safety.
2. Advance Traffic Incident Management training
3. Expand the use of National Emergency Medical Services Information System database.
4. Decrease ambulance response times.
5. Evaluate expansion/use of Stop the Bleed (tourniquets) and on-site blood transfusions.



Emergency Response Strategies Discussion

- Open Discussion
 - What are the best practices and safety countermeasures being implemented?
 - What potential strategies should Montana consider?
 - What concerns and/or questions do we have regarding these strategies?

Participants will vote on the top 3 strategies and top 3 actionable items.



Data Coordination



Training & Equipment