

..... MONTANA 2025

Safe Roads Breakout Sessions

.....>

Jacob Farnsworth, Kimley-Horn
2025 Annual Transportation Safety Meeting
Helena, Montana





Safe Roads



**Roadway
Departure**



Intersections



**Vulnerable Road
User Infrastructure**



Safe Roads

- Breakout Group Facilitator
 - Jacob Farnsworth, Kimley-Horn
- Breakout Group Subject Matter Experts
 - Gabe Priebe, MDT
 - Patricia Burke, MDT



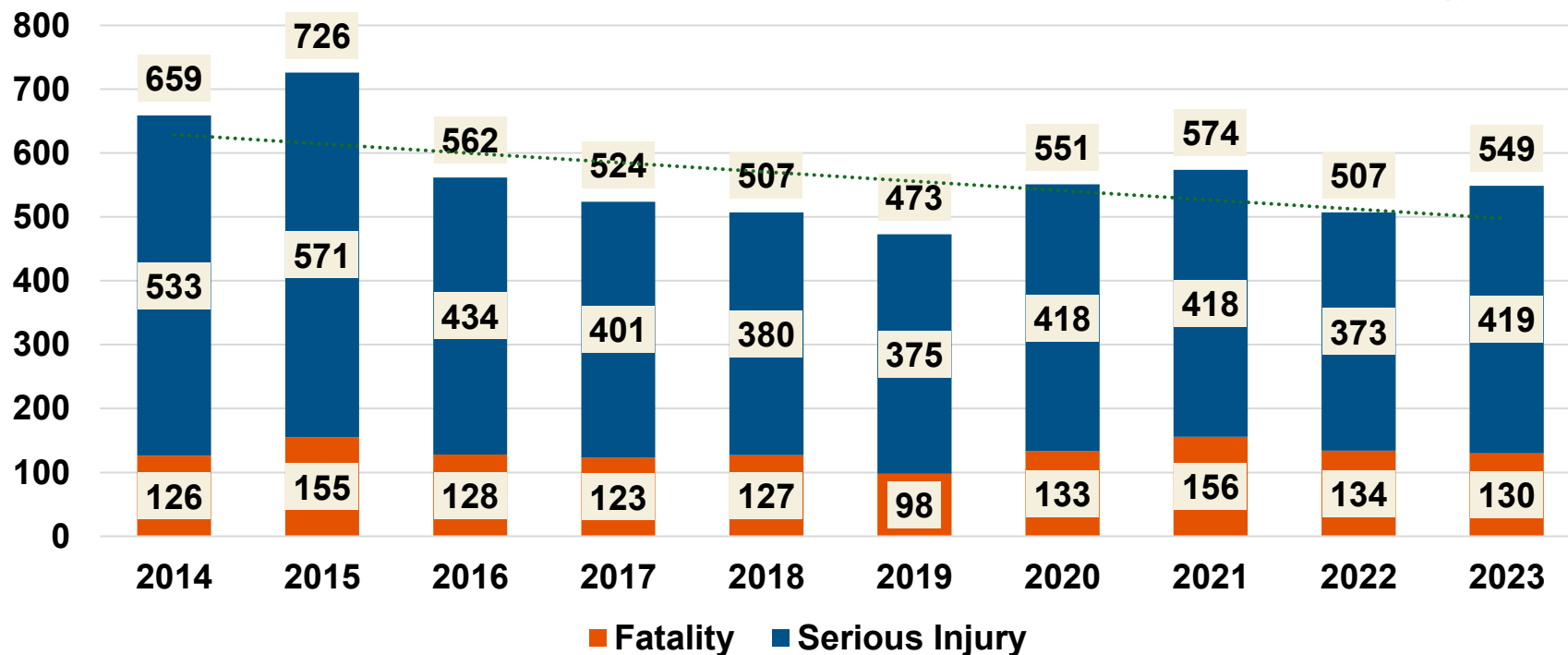
Strategy Break-Out Sessions

- Data driven problem identification
- Review of current best practices and proven strategies
- Discussion of potential strategies
- Group discussion on strategies for Montana

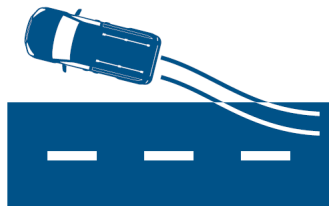


Roadway Departure Fatalities & Serious Injuries (FSI)

Involved in 56% of FSI



**MDT has defined roadway departure crashes as non-junction crashes resulting in one of the following crash types: overturning, fixed object, head-on; or sideswipe-opposite direction crashes.*



Roadway Departure Data Factsheet Key Takeaways



56%

of total FSI

Rural



88%

Urban



11%

Leading Factors of Roadway Departure Fatal and Serious Injuries:



52%

Impaired Drivers



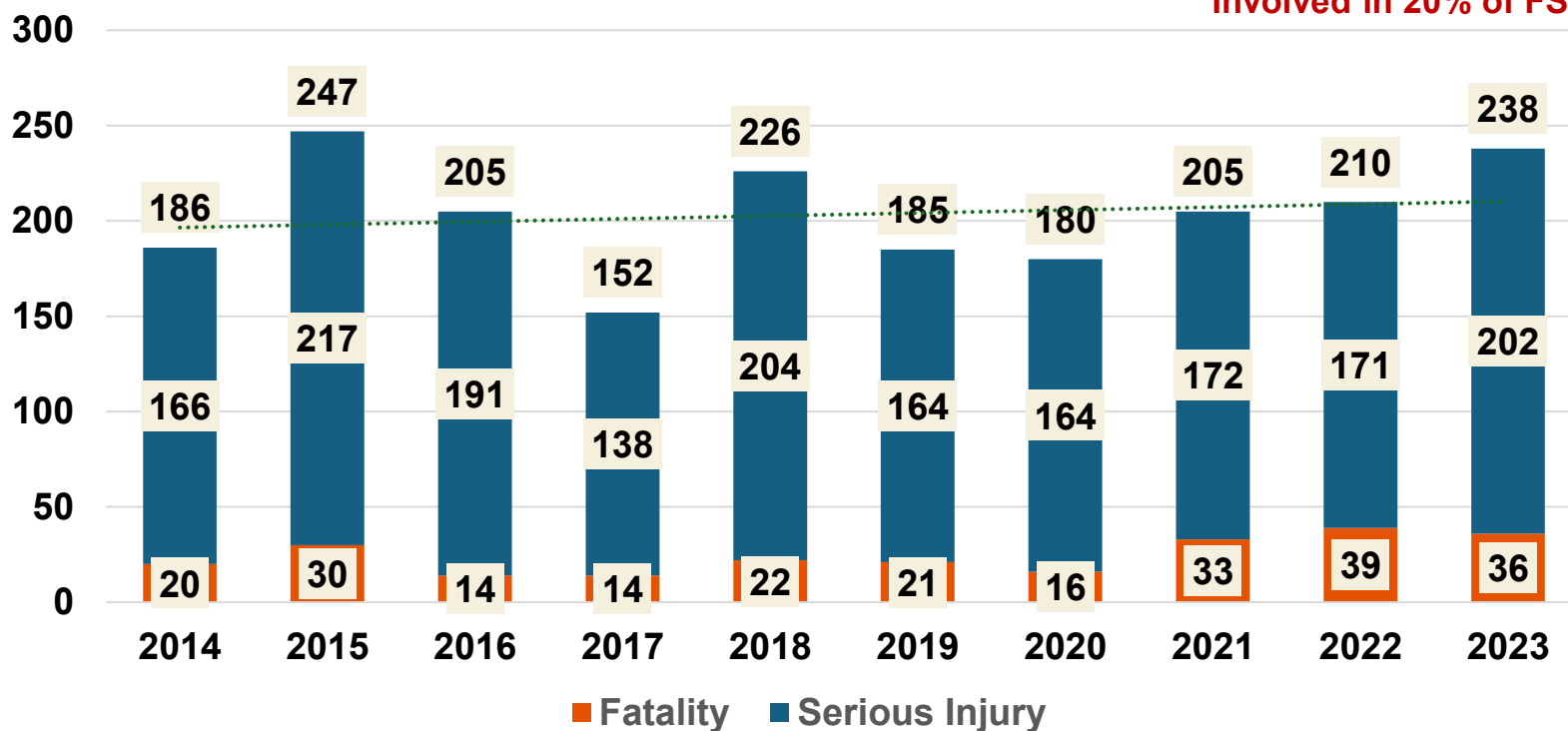
46%

**Unrestrained
Vehicle Occupants**



Intersection-Related Fatalities & Serious Injuries (FSI)

Involved in 20% of FSI



**MDT has defined intersection-related crashes as a crash occurring at an intersection, or near an intersection and judged to be related to the intersection by the reporting officer.*



Intersection-Related Data Factsheet Key Takeaways



20%

of total FSI

Rural



39%

Urban



61%



YOUNGER DRIVERS INVOLVED

(14-20 years of age)
make up **13%** of all intersection related FSI.



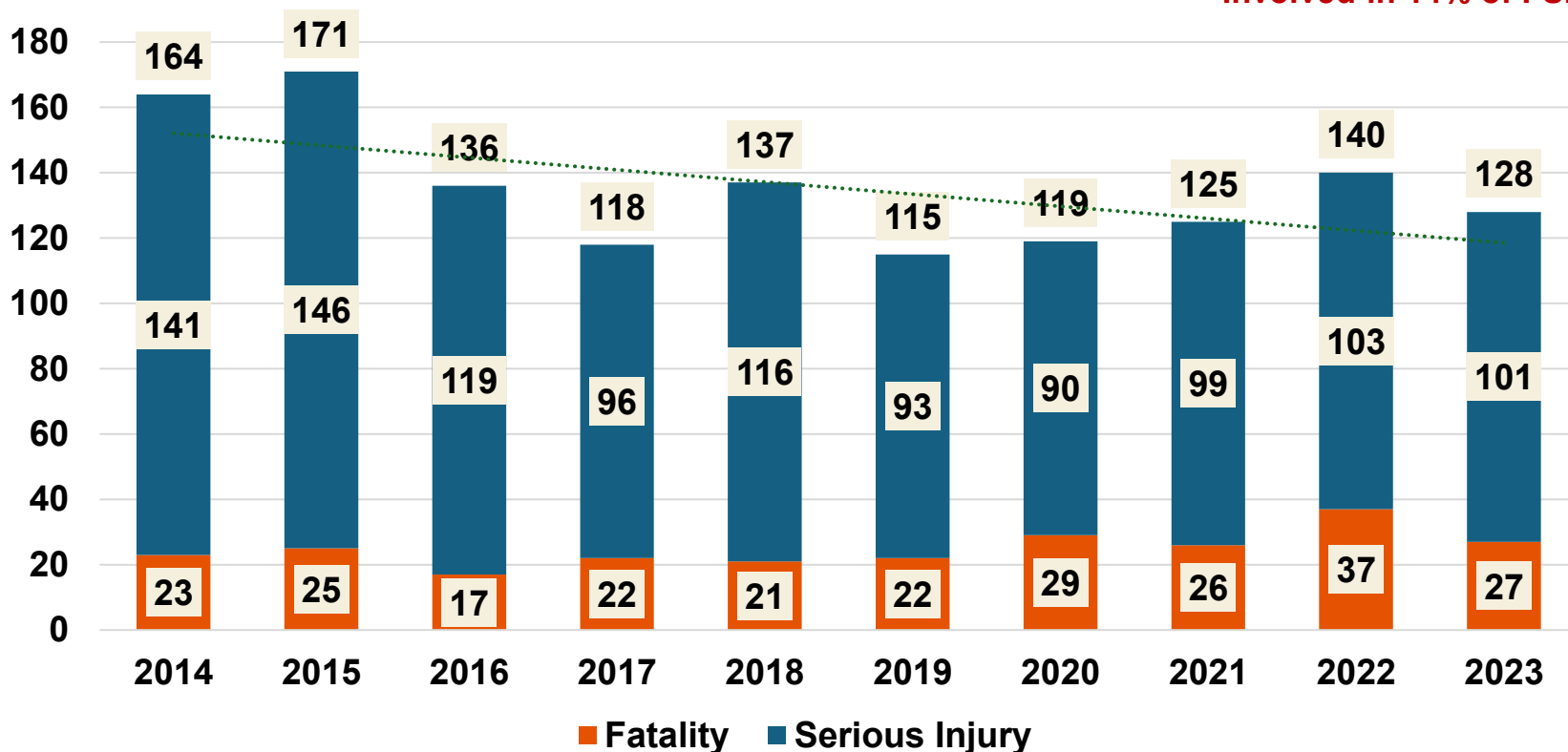
OLDER DRIVERS INVOLVED

(65+ years of age)
make up **7%** of all intersection related FSI.



Motorcyclist Fatalities & Serious Injuries (FSI)

Involved in 14% of FSI



**MDT has defined motorcyclists as any person riding on a motorcycle (or moped), including the operator and any passengers.*



Motorcyclist Data Factsheet

Key Takeaways



14%

of total FSI

Rural



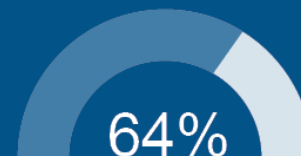
70%

Urban



29%

Summer Months (Jun-Aug)

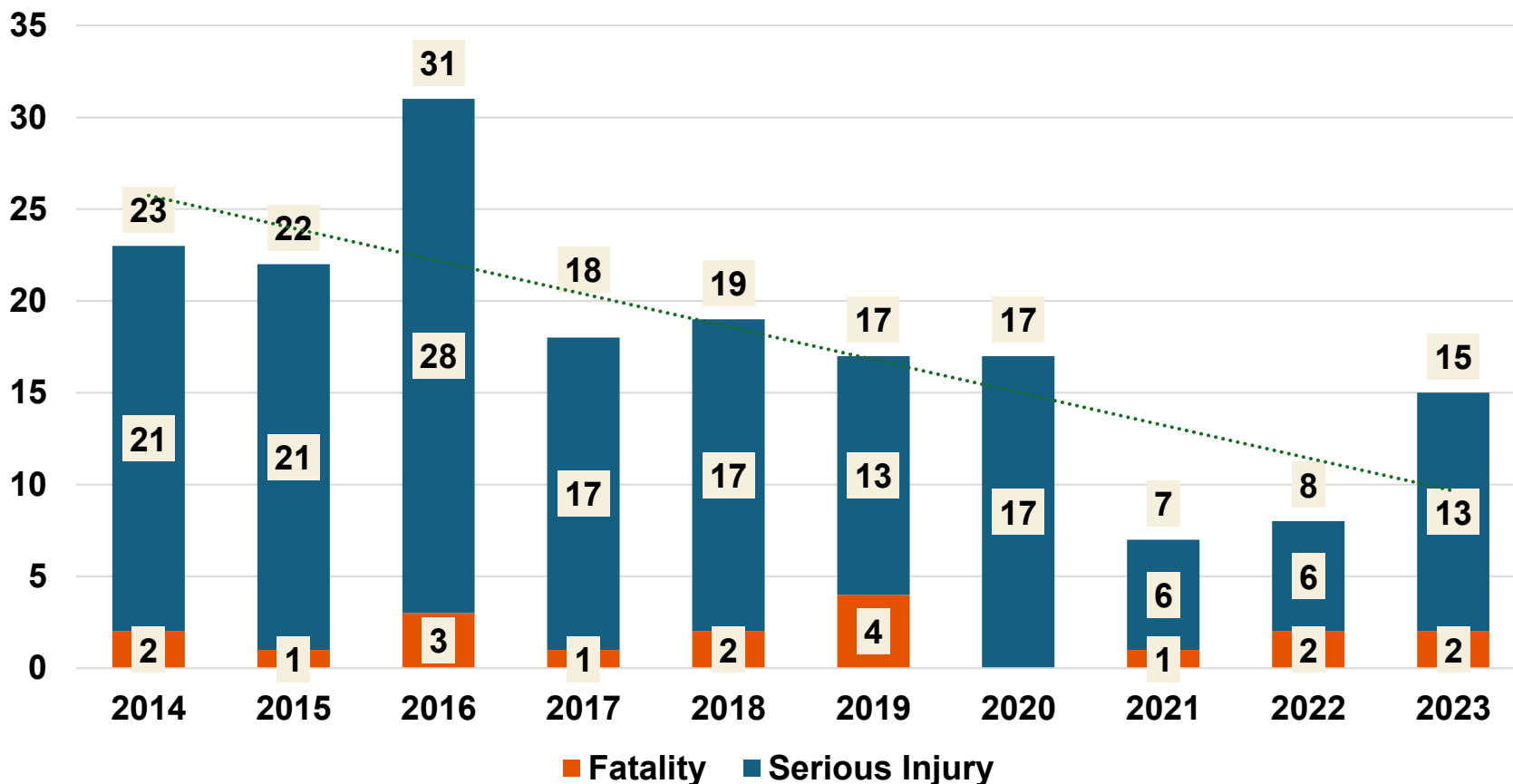


64%



Bicyclist Fatalities & Serious Injuries (FSI)

Involved in 2% of FSI





Bicyclist Data Factsheet Key Takeaways



2%

of total FSI

Rural



21%

Urban



77%



YOUNGER BICYCLISTS INVOLVED
(14-20 years of age)
make up **10%** of all bicyclist FSI.



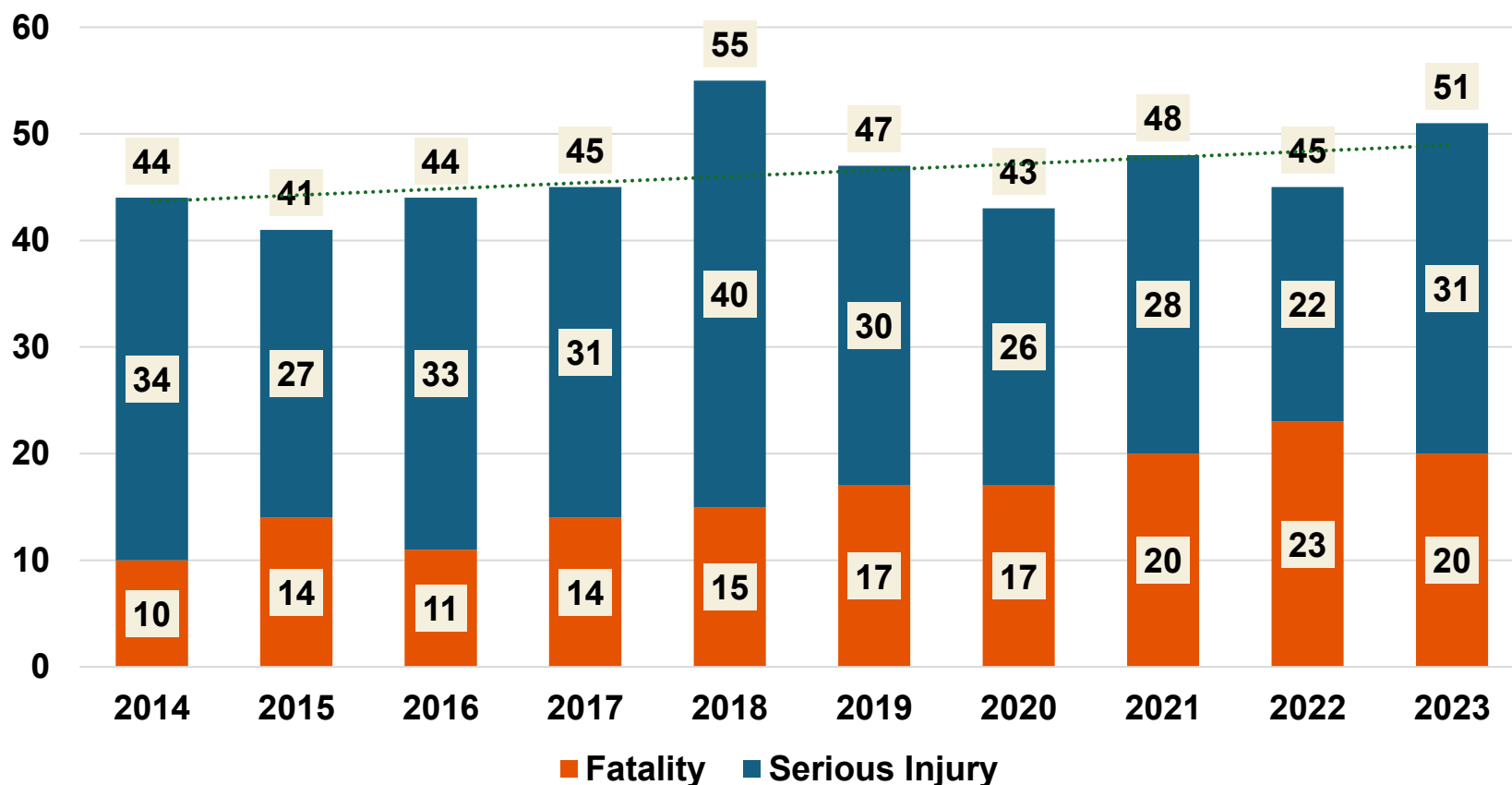
OLDER BICYCLISTS INVOLVED
(65+ years of age)
make up **12%** of all bicyclist FSI.





Pedestrian Fatalities & Serious Injuries (FSI)

Involved in 5% of FSI





Pedestrian Data Factsheet Key Takeaways



5%

of total FSI

Rural



40%

Urban



60%



**YOUNGER
PEDESTRIANS
INVOLVED**
(14-20 years of age)
make up **8%** of all
pedestrian FSI.



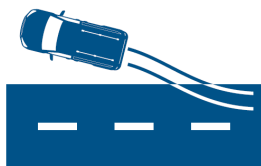
**OLDER
PEDESTRIANS
INVOLVED**
(65+ years of age)
make up **15%** of all
pedestrian FSI.





Applying the Safe System Approach

- How does SSA apply to this emphasis area?



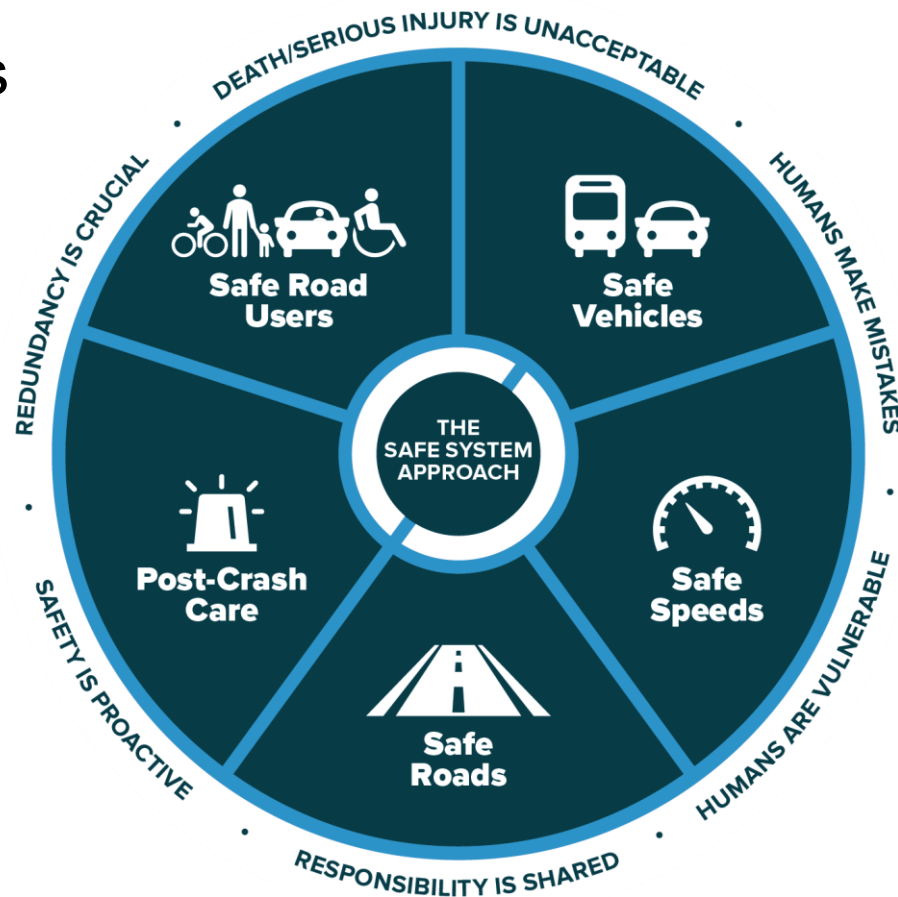
Roadway Departure



Intersections



Vulnerable Road User Infrastructure





Roadway Departure & Intersection – Montana CHSP 2020 Strategies

- Reduce and mitigate roadway departure crashes through data-driven problem identification and the use of best practices.
- Reduce and mitigate speed-related roadway departure/intersection crashes
- Reduce and mitigate intersection crashes through data-driven problem identification and the use of best practices
- Reduce roadway departure and intersection crashes through traffic safety education



Roadway Departure & Intersection – MT CHSP 2020 Strategies (Continued)

- Continue to improve the accuracy, completeness, integration, timeliness, collection, and accessibility of data used in traffic safety analysis
- Support and increase enforcement of proper road use behaviors by all road users (motorized and nonmotorized) identified through crash data
- Explore and implement best practices for reducing roadway departure, including distracted and fatigued driving, in addition to other behavioral factors.



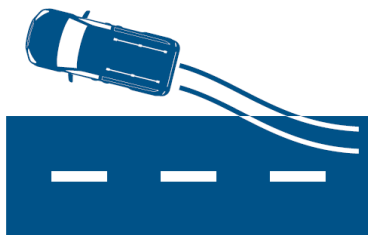
National Strategies for Safe Roads

1. Update design standards that promote the safety, inclusion and mobility of all users.
2. Explore the development of Complete Street policies to fund safe road improvements.
3. Launch a comprehensive Complete Streets Initiative.
4. Expand use of Proven Safety Countermeasures.



Safe Roads Strategies Discussion

- Open Discussion
 - What are the best practices and safety countermeasures being implemented?
 - What potential strategies should Montana consider?
 - What concerns and/or questions do we have regarding these strategies?



Roadway Departure



Intersections



Vulnerable Road User
Infrastructure



Emphasis Area Break Out Sessions

- **Safe Road Users**

- Room: Siena
- Facilitator: Nic Ward

- **Safe Roads**

- Room: Rice
- Facilitator: Jacob Farnsworth

- **Safe Speeds / Safe Vehicles**

- Room: Ross
- Facilitator: Tim Burrows

- **Emergency Response – Post-Crash Care**

- Room: Avila/DeSmet
- Facilitator: Mike Colety

